


COMMUNICATORS

Paradox SP(+)/MG(+) with E16 quick setup

 E16 product image

Short steps to connect the E16 communicator to Paradox SP/SP+/MG/MG+ panels, configure E16 for IP reporting, and add the system to Protegus2. Use this together with the full E16 manual for all other settings.

 **CAUTION**

Install and service only by qualified personnel. Disconnect power before wiring. Unauthorized changes void warranty.

1. Prerequisites

- E16 communicator with LAN connected and a USB Mini-B cable available for configuration.
- Paradox SP/SP+/MG/MG+ panel with keypad access.
- EX-CRP2.4 cable for the Paradox serial connection.
- CMS object ID / account number if reporting to CMS.
- Protegus2 account and communicator MAC / Unique ID.

2. Quick configuration with *TrikdisConfig* software

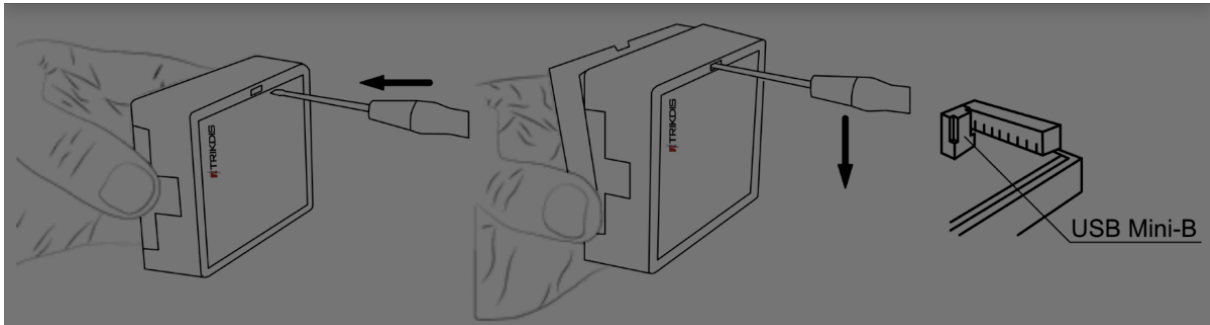
Cookie consent

We use cookies to measure the effectiveness of our documentation and whether users find what they're searching for. With your consent, you're helping us to make our documentation better.

Google Analytics

Accept

Reject



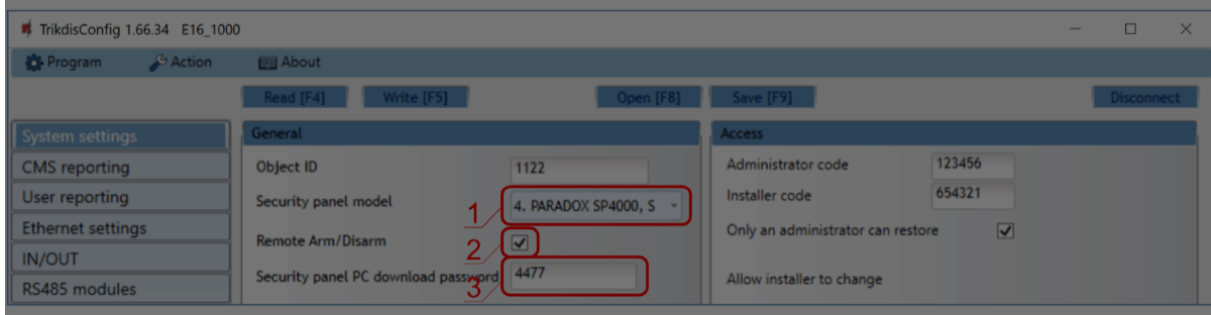
3. Connect E16 to the computer with a USB Mini-B cable.
4. Run **TrikdisConfig**. The software will recognize the communicator and open the configuration window.
5. Click **Read [F4]** to load the current settings. If requested, enter the Administrator or Installer 6-digit code.

Complete the subsection that matches the installation:

- **Protegeus2 app** if the system will be controlled remotely by users.
- **Central Monitoring Station** if the communicator will report to CMS.
- Complete both subsections if the communicator must support both CMS and Protegeus2.

2.1 Settings for connection with Protegeus2 app

In "System settings" window:



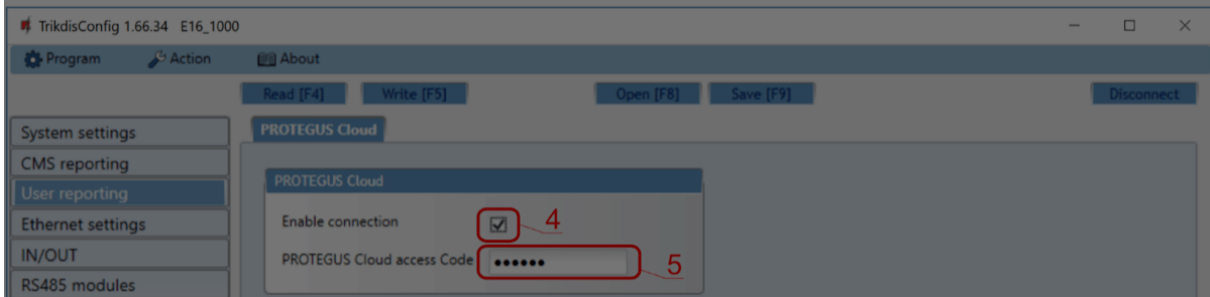
Cookie consent

We use cookies to measure the effectiveness of our documentation and whether users find what they're searching for. With your consent, you're helping us to make our documentation better.

- Google Analytics

**NOTE**

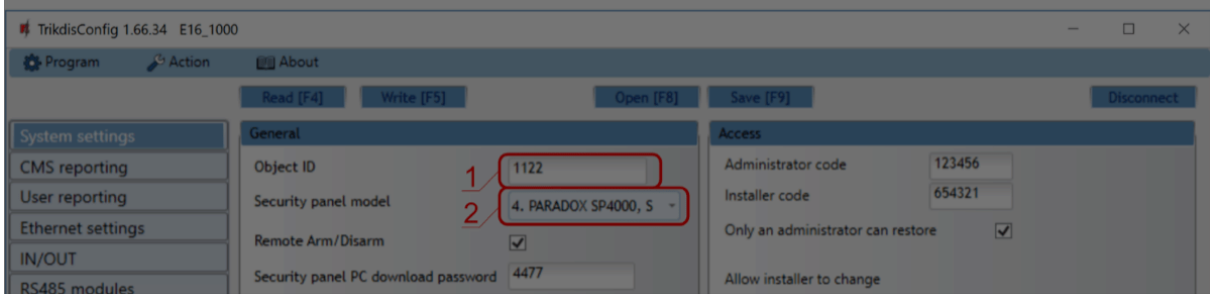
For direct control to work, the control panel must also be programmed as described in the panel-specific section below.

In "User reporting" window, "PROTEGUS Cloud" tab:

4. Tick **Enable connection** to the Protegus Cloud.

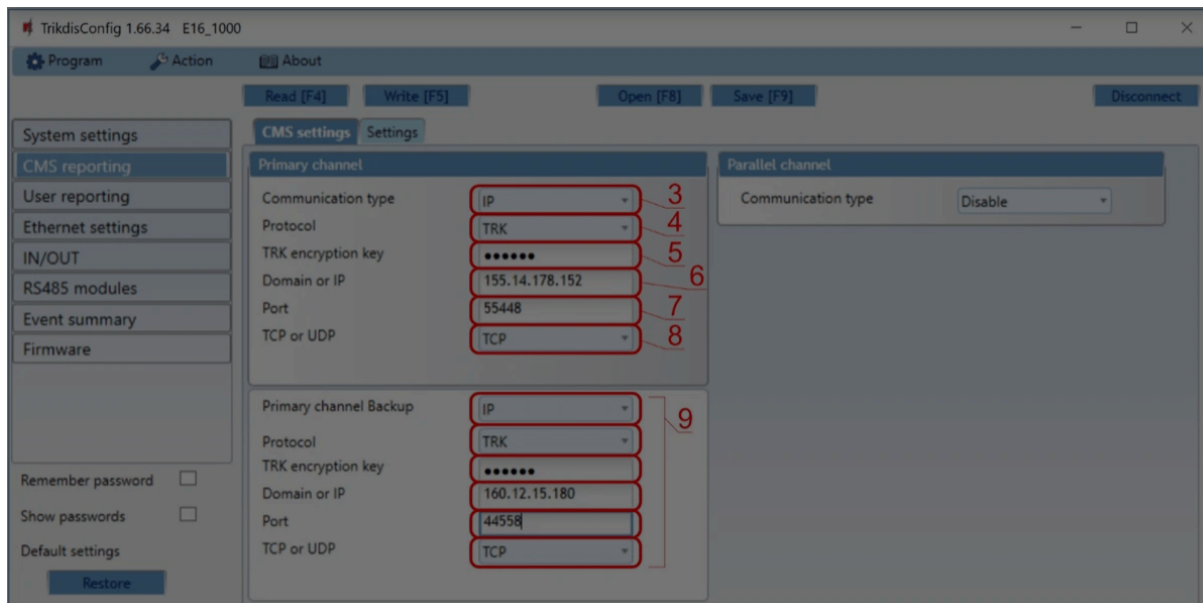
5. Change the **Protegus Cloud access Code** if users should be asked to enter it when adding the system to Protegus2.

After finishing configuration, click **Write [F5]** and disconnect the USB cable.

2.2 Settings for connection with Central Monitoring Station**In "System settings" window:****Cookie consent**

We use cookies to measure the effectiveness of our documentation and whether users find what they're searching for. With your consent, you're helping us to make our documentation better.

Google Analytics



3. Set **Communication type** to **IP**.
4. Select the protocol required by the receiver: **TRK**, **DC-09_2007**, **DC-09_2012**, or **TL150**.
5. Enter the receiver encryption key if the selected protocol requires it.
6. Enter the receiver **Domain or IP** and **Port**.
7. Select **TCP** or **UDP**.
8. Configure backup and parallel channels if the installation requires redundancy.

NOTE

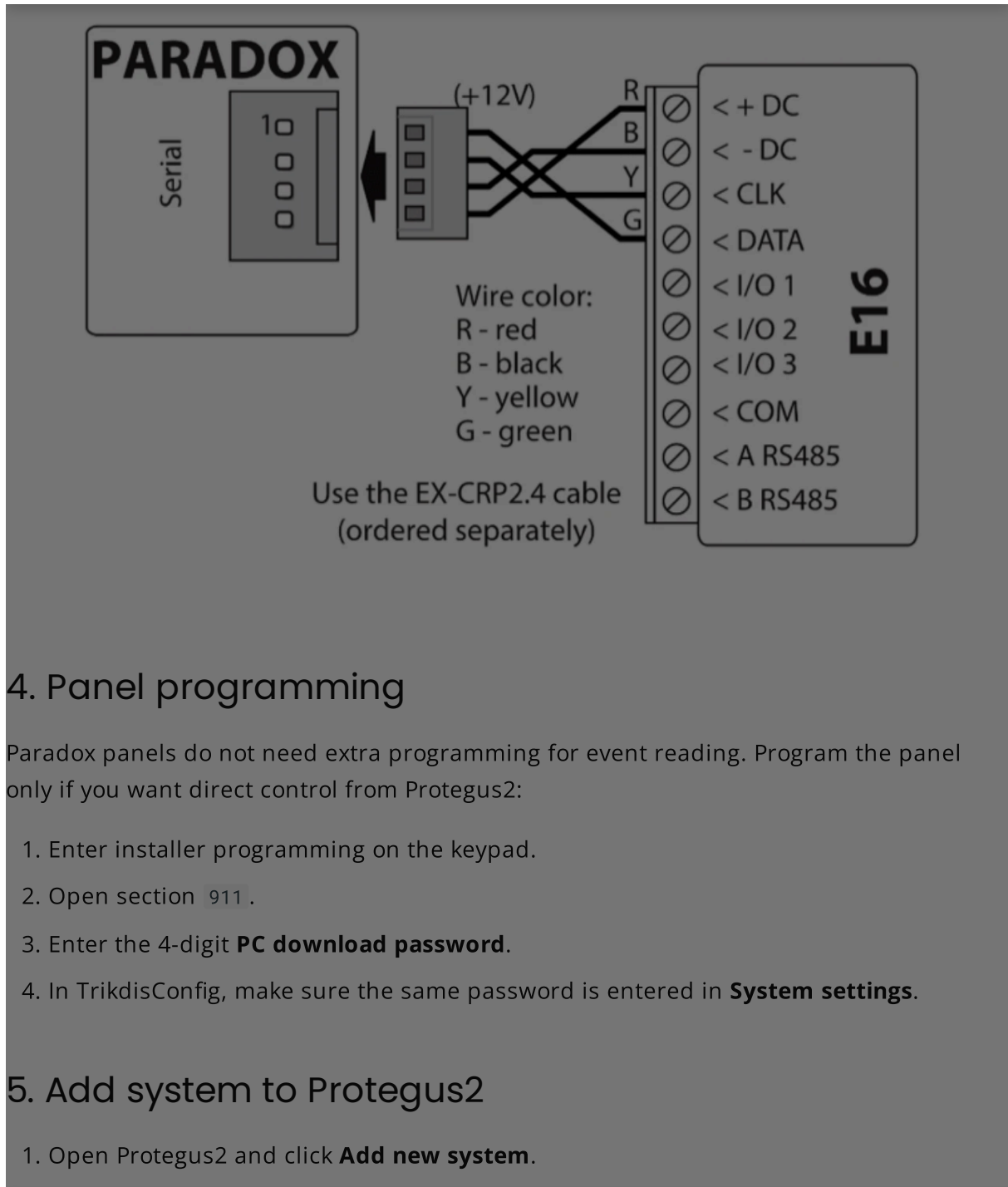
If you select a **DC-09** protocol, also enter the object, line, and receiver numbers in the **Settings** tab of the **CMS reporting** window.

After finishing configuration, click **Write [F5]** and disconnect the USB cable.

Cookie consent

We use cookies to measure the effectiveness of our documentation and whether users find what they're searching for. With your consent, you're helping us to make our documentation better.

Google Analytics



Cookie consent

We use cookies to measure the effectiveness of our documentation and whether users find what they're searching for. With your consent, you're helping us to make our documentation better.

Google Analytics



6. System check

1. Arm and disarm the system from the keypad.
2. Trigger a test alarm while the system is armed.
3. Confirm that events reach the CMS and Protegus2.

Cookie consent

We use cookies to measure the effectiveness of our documentation and whether users find what they're searching for. With your consent, you're helping us to make our documentation better.

Google Analytics

