

COMMUNICATORS

Transmitter T16



Cookie consent

We use cookies to measure the effectiveness of our documentation and whether users find what they're searching for. With your consent, you're helping us to make our documentation better.

Google Analytics

Accept

Reject



1.1 Features

Communication

- Sends event messages to CMS.
- RAS3, RAS2M, LARS1, LARS radio network protocols.
- Output power from 1 W to 5 W.
- Possibility to use external IP transmitter as main communication channel.
- Transmission of event messages using Contact ID and 4+2 codes.
- Use of security control panel account ID for multi-area systems.

Configuration

- Quick and easy installation.
- Firmware updates.
- Two types of access levels (accounts), for the installer and for the administrator.
- Possibility to configure remotely when an IP transmitter is used.

Serial port, inputs and outputs

- Universal serial port for connecting various security control panels.
- TIP/RING landline interface can accept messages from the control panel in Contract ID and 4+2 codes.
- RS485 interface for IP transmitters and extension modules.
- 6 inputs, selectable types: NC, NO, EOL (2,2 kΩ). (*T16V, T16U*)

5 inputs, selectable types: NC, NO, EOL (2,2 kΩ). (*T16U5*)

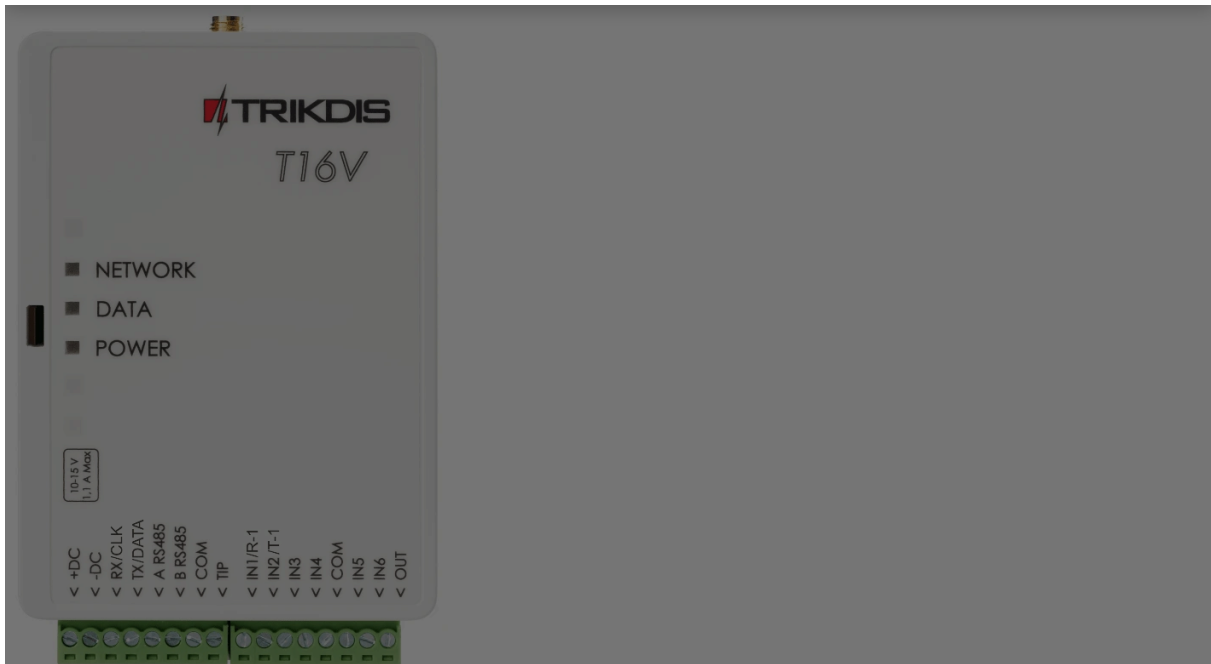
- 1 output. (*T16V, T16U*)

2 output. (*T16U5*)

Cookie consent

We use cookies to measure the effectiveness of our documentation and whether users find what they're searching for. With your consent, you're helping us to make our documentation better.

- Google Analytics



1.1 Description of operation

When connected to the terminals of a control panel, the transmitter reads the signals from the control panel and transforms them into messages that correspond with Contact ID protocol codes.

If the transmitter is configured to transmit in RAS-3 radio system encoding, the *Contact ID* message will be transmitted unchanged. If the transmitter is configured to transmit in other radio system encodings, the messages will be converted to codes of that system. The conversion table is saved in the transmitter's memory and can be altered if needed. If *TRIKDIS* equipment is used for reception, messages transmitted in any encoding are forwarded to the monitoring program in their precise meanings. *NC*, *NO* or *EOL=2,2 kΩ* type eternal circuits can be connected to the transmitter's *IN* terminals (inputs). If the circuit's state is either altered or restored to the initial state, the transmitter will send an event message.

The transmitter sends the control panel's messages using a pre-set radio frequency and encoding. The same message can be repeated 1-10 times. It is possible to set the

Cookie consent

We use cookies to measure the effectiveness of our documentation and whether users find what they're searching for. With your consent, you're helping us to make our documentation better.

Google Analytics



The transmitter automatically checks the power supply voltage. If the voltage falls below $11,5 \pm 0,2$ V, the transmitter will send a message about the power supply voltage being insufficient. If the voltage rises above $12,6 \pm 0,2$ V, the transmitter will send a message about the power supply voltage being restored.

If the power supply voltage falls below $10 \pm 0,2$ V, the transmitter will switch to sleep mode. Before switching, the transmitter will send a message about the voltage drop. While operating in sleep mode, the transmitter does not store or send any messages. The transmitter will switch from sleep mode to ordinary mode only when 12,6 V power supply voltage remains stable after switching on the transmitter's power.

DC power source. The T16 must be connected directly to the power terminals (AUX) or 12 V battery terminals. The cross-sectional area of the transmitter's power wire should be no less than 1 mm^2 . When transmitting data, the transmitter consumes 1,2 A of current, so stability of the power supply voltage is important for reliable operation of the transmitter.

Antenna. The antenna is very important to ensure a good quality connection. Use only an antenna specified for the correct frequency and power. If you are using a $1/4 \lambda$ antenna, it must be vertically oriented and mounted as high as possible. Avoid mounting the antenna in places where metal shields or concrete partitions would block the reception antenna. The quality of connectivity is best when the transmitter and receiver antennas are within line of sight of each other. Usually the quality of connectivity can be enhanced by mounting the antenna as high as possible. The antenna should be connected to the transmitter using coaxial 50Ω cable. The longer the cable, the bigger the signal losses in it. It is recommended to use a cable no longer than 10 meters. When the cable length is less than 5 m, RG-58U or a better cable is recommended. Use a cable with lower attenuation for longer cables. When the transmitter is installed, check the quality of the connectivity. To do this, send a few messages and check the signal level in the receiver. A signal level not lower than 3 is sufficient.

Data cable. The data cable connecting the radio transmitter and the control panel should be no longer than 50 cm. If the data cable is longer, a shielded cable must be used. The data cable should be connected to the keypad bus, series port or landline dialer on the control panel. Avoid mounting the cable in parallel with AC power cables, the antenna cable or other sources of strong electromagnetic field.

Cookie consent

We use cookies to measure the effectiveness of our documentation and whether users find what they're searching for. With your consent, you're helping us to make our documentation better.

Google Analytics



1.2 Specifications

Parameter	T16V	T16U	T16U5
Power supply voltage	10-15 V DC		
Current consumption	Up to 50 mA (stand-by mode) / Up to 1,2 A (sending mode)		
Radio frequencies	136 MHz – 174 MHz (VHF)	430 MHz – 512 MHz (UHF)	430 MHz – 470 MHz (UHF)
Radio channels	2		
RF output resistance	50 Ω		
Secondary emissions	Meets the requirements of EN 300 113		
Broadcasting protocols	RAS3, RAS2M, LARS, LARS1, LARS_RAS2M, LARS1_RAS2M		
Broadcasting time	60-400 ms (depends on chosen radio protocol)		
Memory	Up to 32 messages		
Inputs	6, selectable types: NC, NO, EOL (2,2 kΩ)	6, selectable types: NC, NO, EOL (2,2 kΩ)	5, selectable types: NC, NO, EOL (2,2 kΩ)
Output	1, OC type, commutation voltage 15 V, 1 A	1, OC type, commutation voltage 15 V, 1 A	2, OC type, commutation voltage 15 V, 1 A
Event message format	Contact ID; 4+2		
Operating environment	Temperature from -20 °C to +50 °C, relative air humidity 80 % at +20 °C		
Dimensions	113 x 71 x 26 mm		
Weight	0,10 kg		

Receivers for messages sent in different radio system formats by T16 series transmitters

	RAS-002	RAS-2M	LARS	LARS1	RAS-3_CID
TRIKDIS R7	+	+	+	+	
TRIKDIS RF7	+	+	+	+	

Cookie consent

We use cookies to measure the effectiveness of our documentation and whether users find what they're searching for. With your consent, you're helping us to make our documentation better.

Google Analytics



1.3 Transmitter elements

**SMA connector for antenna.
LED indicator lights. Slot for
opening the top lid.
Terminals for connecting
wires.**

T16V, T16U

T16U5

1.4 Purpose of terminals

Terminal	Description
+DC	Power supply terminal (10-15 V DC positive terminal)
-DC	Power supply terminal (10-15 V DC negative terminal)
Rx/CLK	Security control panel's serial port terminal CLK
Tx/DATA	Security control panel's serial port terminal DATA
A 485	Terminal A of RS485 bus
B 485	Terminal B of RS485 bus
COM/RING	Common (negative) terminal or RING terminal of telephone communicator
TIP	TIP terminal of telephone communicator
IN1/R-1	1st input terminal, selectable types: NC, NO, EOL (2,2 kΩ). (factory setting NO) or terminal for monitoring the landline
IN2/T-1	2nd input terminal, selectable types: NC, NO, EOL (2,2 kΩ). (factory setting NO) or terminal for monitoring the landline
IN3	3rd input terminal, selectable types: NC, NO, EOL (2,2 kΩ). (factory setting NO)
IN4	4th input terminal, selectable types: NC, NO, EOL (2,2 kΩ). (factory setting NO)
COM	Common (negative) terminal
IN5	5th input terminal, selectable types: NC, NO, EOL (2,2 kΩ). (factory setting NO)
IN6 or	6th input terminal, selectable types: NC, NO, EOL (2,2 kΩ). (factory setting NO). (T16V, T16U)

Cookie consent

We use cookies to measure the effectiveness of our documentation and whether users find what they're searching for. With your consent, you're helping us to make our documentation better.

Google Analytics



1.5 LED indication of operation

Indicator	Light status	Description
NETWORK	Green blinking	The radio transmitter is sending data
DATA	Green solid	There are unsent event messages in the memory buffer
DATA	Red solid	Memory buffer overflow
DATA	Red blinking (1/1)	Control panel connection problem
DATA	Red blinking (1/10)	RS-485 module connection problem
POWER	Green blinking	Power source voltage is present
POWER	Yellow blinking	Low level power source voltage
POWER	Green and yellow blinking	(Configuration mode) USB cable is connected

1.6 Components necessary for installation

Before beginning installation, ensure that you have:

1. A USB cable, needed for configuration (Mini-B type);
2. At least 4-wire cable for connecting the transmitter to the control panel;
3. The manual of the control panel to which the transmitter will be connected to;
4. An antenna;
5. A flat-head 2,5 mm screwdriver.

You can order the materials from your local distributor.

2. Schematics and installation

2.1 Schematics for connecting control panels

Cookie consent

We use cookies to measure the effectiveness of our documentation and whether users find what they're searching for. With your consent, you're helping us to make our documentation better.

- Google Analytics



Manufacturer	Control panel model	T16V, T16U, T16U5
DSC®	PC1616, PC1832, PC1864, PC1616, PC1832, PC1864	+
PYRONIX®	MATRIX 424, MATRIX 832, MATRIX 832+, MATRIX 6, MATRIX 816	+
GE®	CADDX NX-4, NX-6, NX-8, NX-8E	+
PARADOX®	SPECTRA SPxxxx, 1727, 1728, 1738	+
PARADOX®	MAGELLAN MG5000, MG5050	+
PARADOX®	DIGIPLEX EVO48, EVO192, EVOHD, NE96, EVO96	+
PARADOX®	ESPRIT E55, E65, 728ULT, 738ULT	+
SECOLink	PAS832	+
TEXECOM	PREMIER 412, 816, 816+, 832 / PREMIER ELITE 12, 24, 48, 88, 168, 640	+
CROW	RUNNER	+
ARGUS-SPECTR	Strelec RROP	+
BOLID	C2000	+
ROVALANT	A6-06 (LARS / MAYAK)	+
RISCO	LightSYS	+
Honeywell	Vista	+
INIM	Smartline	+
Telephone communicator	CID; 3/1, 4/1, 4/2 2300; 3/1, 4/1, 4/2 1400	+

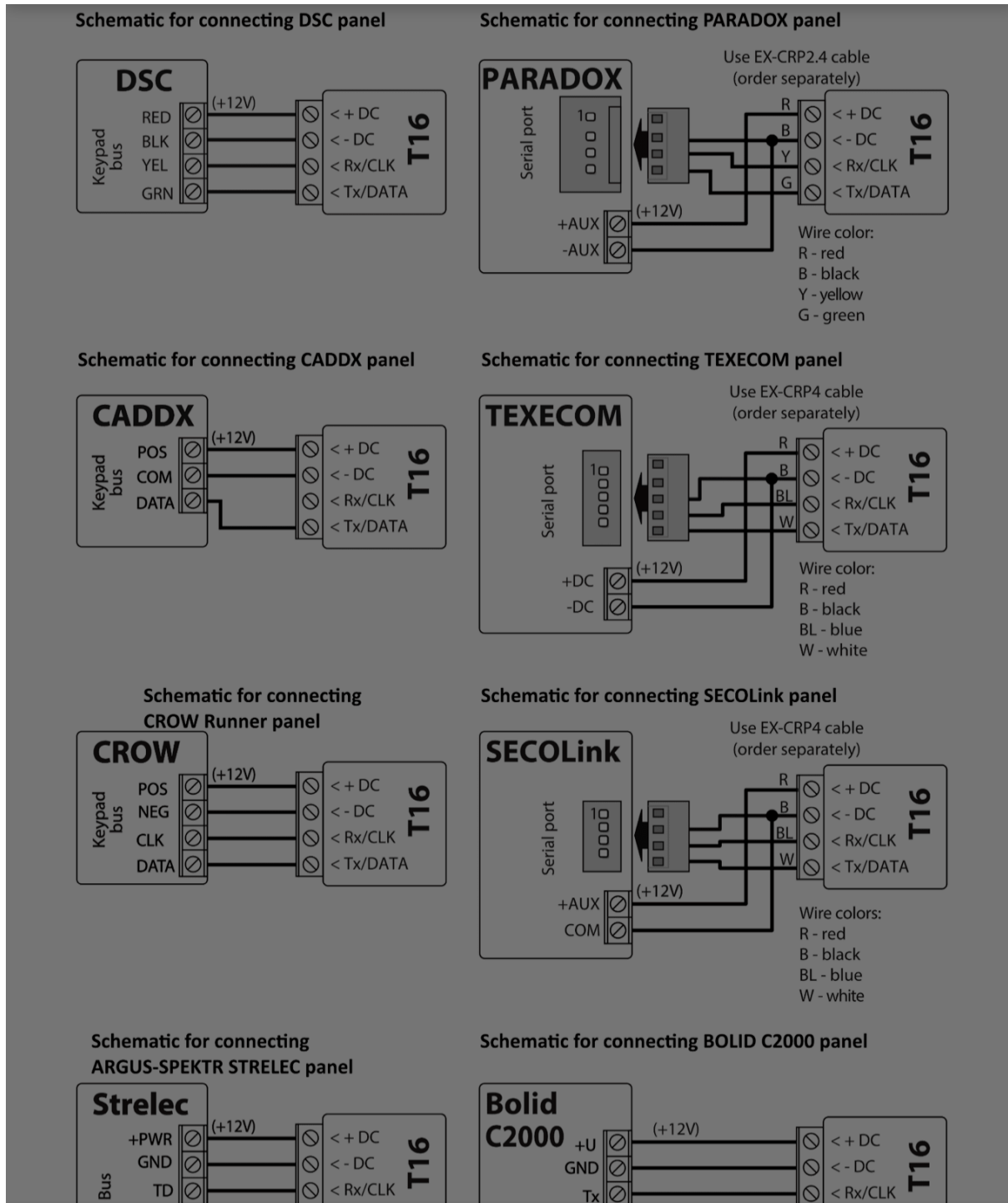
The zones (inputs IN) of **T16V,*** T16U, T16U5* transmitters can be connected directly to various devices (e.g.: sensors, panic button, siren output) or to the control panel's programmable outputs PGM. You must choose the correct zone (input IN) type depending on the operation of the device being connected.

DC power source. Use a wire with a cross-sectional area of no less than 1 mm² to connect the transmitter. Avoid using long cables (recommended length – up to 1m). Avoid mounting the cable in parallel with AC power cables, the antenna cable or other strong sources of

Cookie consent

We use cookies to measure the effectiveness of our documentation and whether users find what they're searching for. With your consent, you're helping us to make our documentation better.

Google Analytics

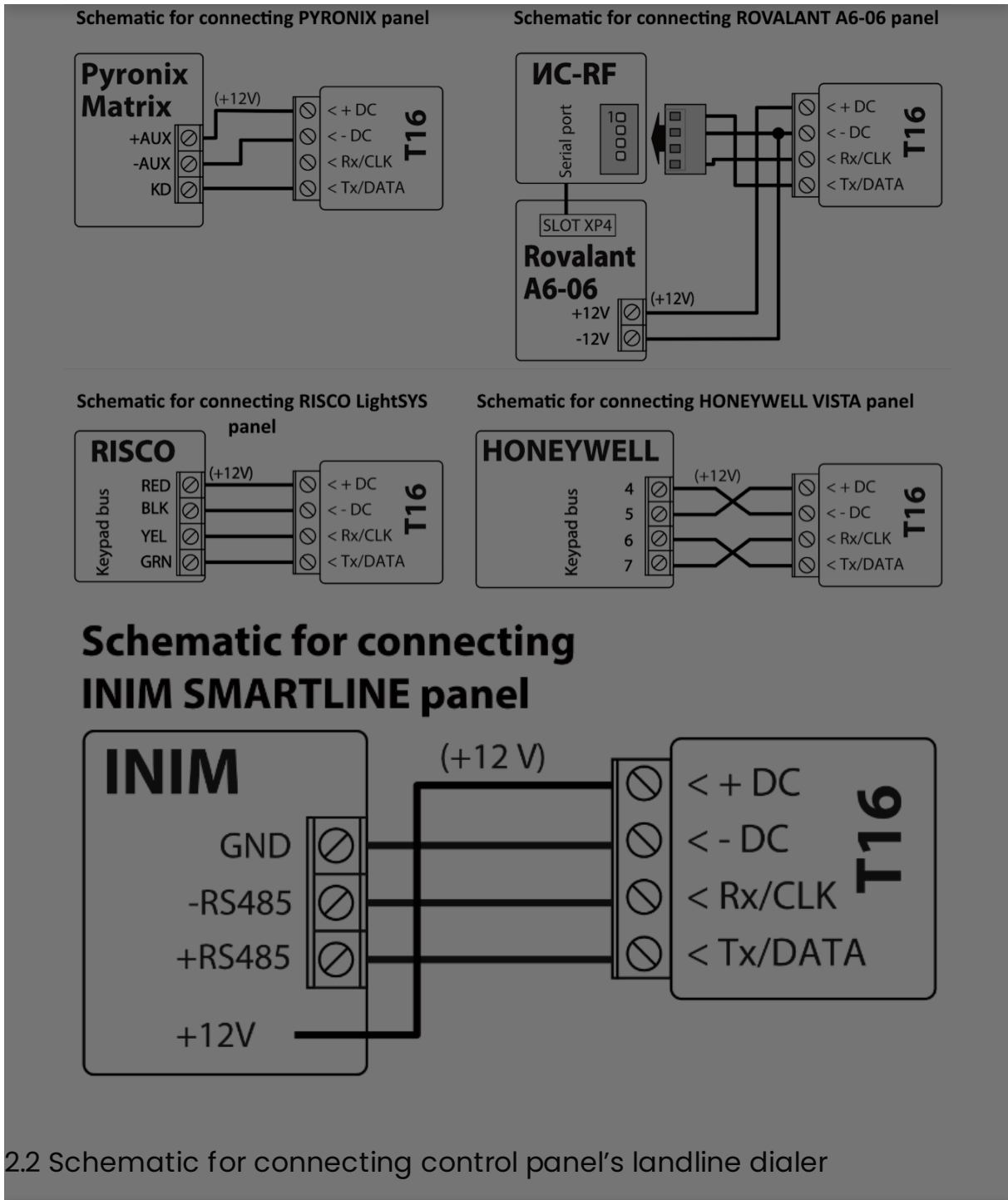


Cookie consent

We use cookies to measure the effectiveness of our documentation and whether users find what they're searching for. With your consent, you're helping us to make our documentation better.

- Google Analytics





2.2 Schematic for connecting control panel's landline dialer

Cookie consent

We use cookies to measure the effectiveness of our documentation and whether users find what they're searching for. With your consent, you're helping us to make our documentation better.

- Google Analytics

**⚠ IMPORTANT**

T16 should not be connected to a working telecom landline.

Referring to the control panel's programming instructions, set the following parameters for the control panel's landline dialer:

- Enter the control panel's 4-symbol identification number (account number, 0-9, A-F);
- Enter the 2-symbol telephone receiver number that the panel will call when an event occurs (e.g.: 12). If the panel's TLC programming rule requires, enter a number end symbol at the end of the number;
- Set the method of relaying messages to DTMF tones;
- Set the automatic message transfer protocol Contact ID.
- If you want to transfer special messages or the panel does not have automatic Contact ID code formatting, manually enter the required event codes.

Form a panel message and check the operation of the interface. Blinking of the DATA indicator will show when the transmitter is reading the panel's messages.

Check to make sure that the transmitter correctly sent all of the control panel's messages formed during the test to the set recipient.

2.3 Schematics for connecting inputs

The transmitter has 6 (or 5) input terminals (IN1, IN2, IN3, IN4, IN5, IN6) for connecting NO, NC, EOL type circuits. The factory settings for all of the inputs is NO type. The input circuit type can be changed in the TrikdisConfig window **Reports → Inputs**.

Schematics for connecting NO, NC, EOL type circuits:

Normally closed circuit
with 2.2k end of line

Normally open circuit
with 2.2k end of line

Cookie consent

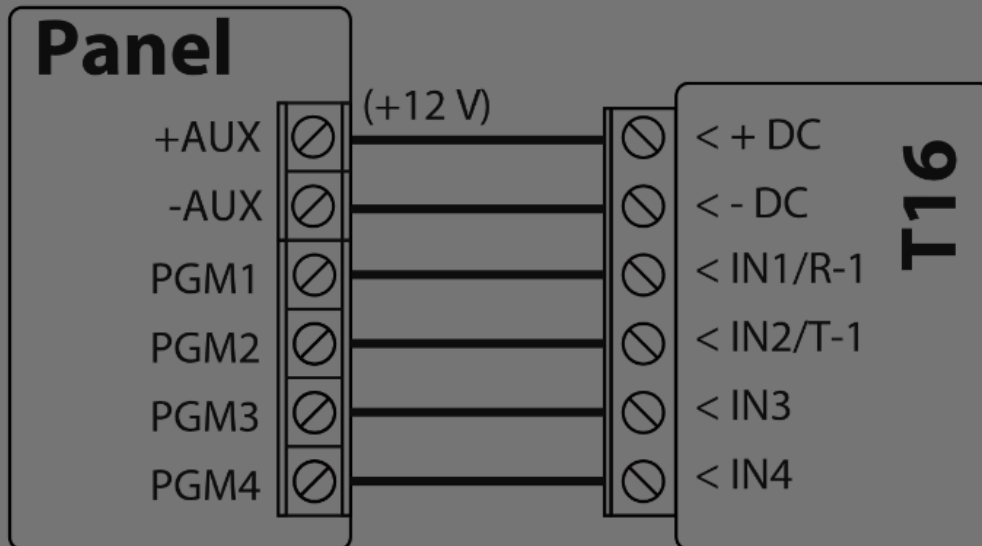
We use cookies to measure the effectiveness of our documentation and whether users find what they're searching for. With your consent, you're helping us to make our documentation better.

Google Analytics



2.4 Schematic for connecting control panel's PGMs

Schematic for connecting control panel's PGM outputs to transmitter



The transmitter's inputs (IN) should be set to either NO or NC.

2.5 Schematic for connecting a siren

The siren should be connected when the *TM17* is connected to the transmitter. A siren that consumes up to 1 A of current can be connected to the *T16* transmitter's output OUT1 (or OUT2). It is activated if one of the transmitter's inputs (IN) is triggered in armed mode. The siren turns off after 3 minutes or after using a contact key.



Cookie consent

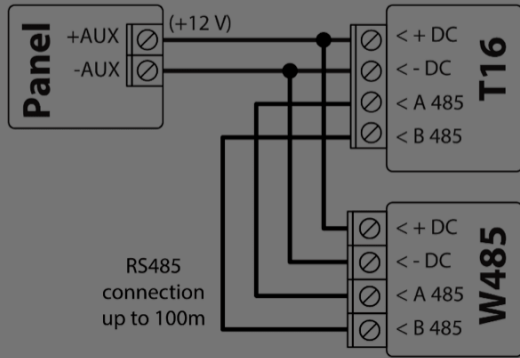
We use cookies to measure the effectiveness of our documentation and whether users find what they're searching for. With your consent, you're helping us to make our documentation better.

Google Analytics

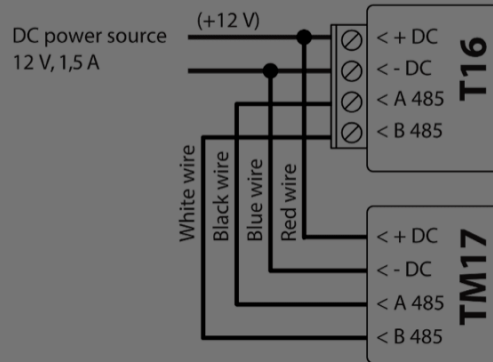


2.6 Schematics for connecting RS485 modules

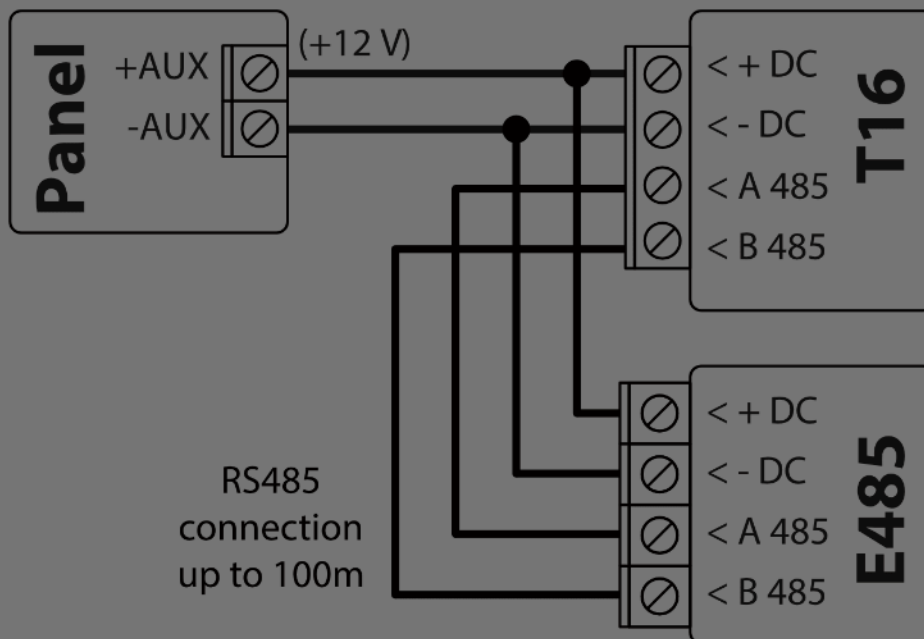
Schematic for connecting Wi-Fi module W485



Schematic for connecting TM17 reader



Schematic for connecting "Ethernet" module E485



When the RS485 data bus is longer than 1 m, use a twisted-pair cable (STP 4x2x0,5). Avoid mounting the cable in parallel with AC power cables, the antenna cable or other strong sources of electromagnetic field.

Cookie consent

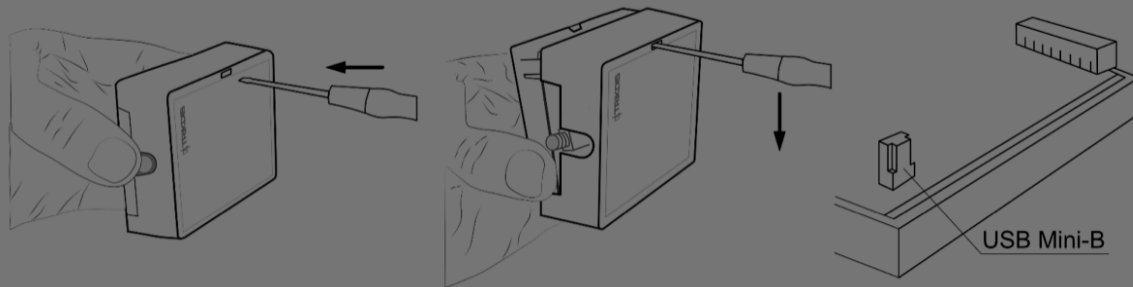
We use cookies to measure the effectiveness of our documentation and whether users find what they're searching for. With your consent, you're helping us to make our documentation better.

- Google Analytics



3. Setting parameters with TrikdisConfig software

1. Download the configuration software TrikdisConfig from www.trikdis.com (you can find the program by typing "TrikdisConfig" into the search field) and install it.
2. Remove the front cover of the T16 using a flat-head screwdriver as shown below:



1. Connect the T16 to a computer using a USB Mini-B cable.
2. Launch the configuration program TrikdisConfig. The program will automatically recognize the connected device. If required, enter the administrator or installer code in a pop-up window and TrikdisConfig will automatically open the T16 configuration window.

3.1 Description of TrikdisConfig status bar

Once the T16 is connected to the TrikdisConfig software, the program will display information about the connected device in the status bar:

IMEI/Unique ID: 29															
Status:	Reading done	Device:	T16	SN:	29	BL:	1.01	FW:	1.10	HW:	1.02	Connection:	USB	Role:	Admin
Name	Description														
Unique ID	Device's serial number														
Status	Operational state														
Device	Type of device (must show T16)														

Cookie consent

We use cookies to measure the effectiveness of our documentation and whether users find what they're searching for. With your consent, you're helping us to make our documentation better.

Google Analytics

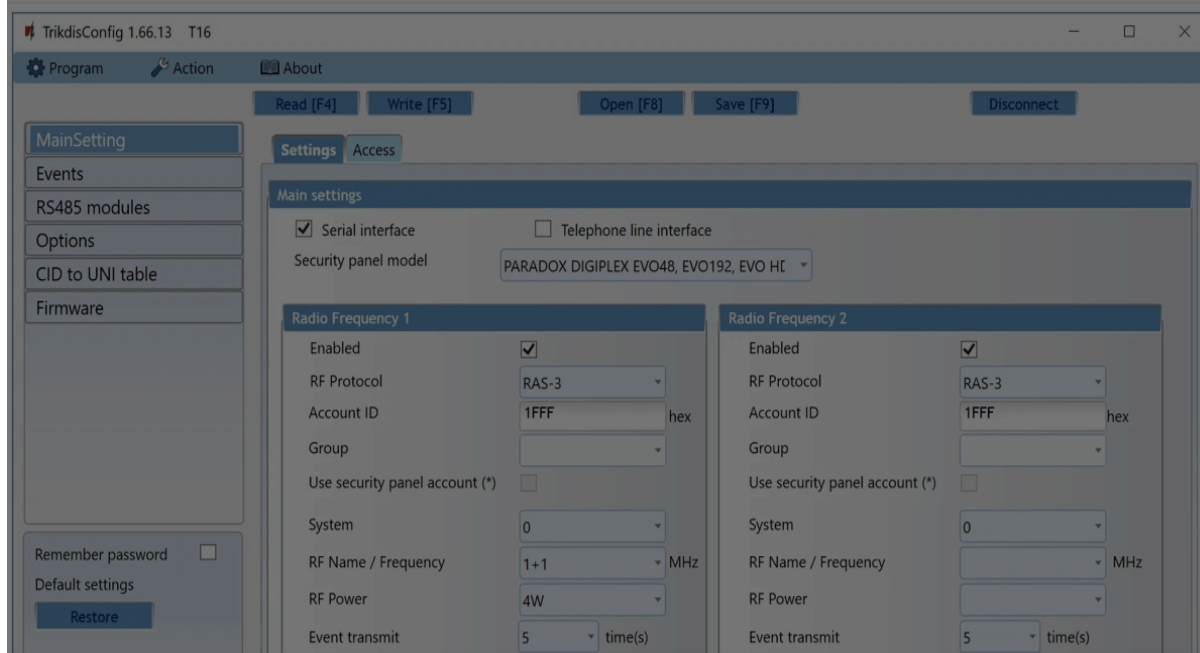
**NOTE**

Click **Read [F4]** to make the program read and display the settings that are currently saved on the device. / Click **Write [F5]** to save the settings made in the program to the device. / Click **Save [F9]** to save the settings to a configuration file. You can upload the saved settings to other devices later. This allows to quickly configure multiple devices with the same settings. / Click **Open [F8]** and choose a configuration file to view previously saved settings. / If you want to revert to the default settings, click the **Restore** button at the lower left of the screen.

After the Read [F4] button is clicked, the program will read and show settings currently saved on the T16. With TrikdisConfig, set the required parameters using the following program window descriptions.

3.2 “Main Setting” window

“Settings” tab



Cookie consent

We use cookies to measure the effectiveness of our documentation and whether users find what they're searching for. With your consent, you're helping us to make our documentation better.

Google Analytics



- **Security panel model** – specify the type of the control panel that the transmitter will be connected to.

Settings group “Radio frequency 1”

- **Enabled** – tick the box to turn on the transmitter’s radio channel.
- **RF protocol** – specify the radio protocol that will be used (RAS-2M, RAS-3, LARS, LARS1, LARS_RAS2M, LARS1_RAS2M).
- **Account ID** – enter the user’s identification number for the internal and panel events sent by the transmitter.
- **Group** – enter the partial user identification ID (used only with the LARS RF protocol).
- **Use security panel account** – tick the box and the control panel’s events will be sent with the security control panel’s ID. Not all panels allow to use the identification number.
- **System** – radio network system number. Used for assigning objects (users) to groups in a radio network.
- **RF name/frequency** – the name of the radio channel frequency, can be described in the window **Options > Available radio frequencies**.
- **RF power** – choose transmitter power (1-5 W).
- **Event transmit** – enter how many times to repeat event transmissions (1-10 times). (Recommended to leave default settings).
- **Test event transmit** – enter how many times to repeat test transmissions (1-10 times). (Recommended to leave default settings).

Settings group “Radio frequency 2”

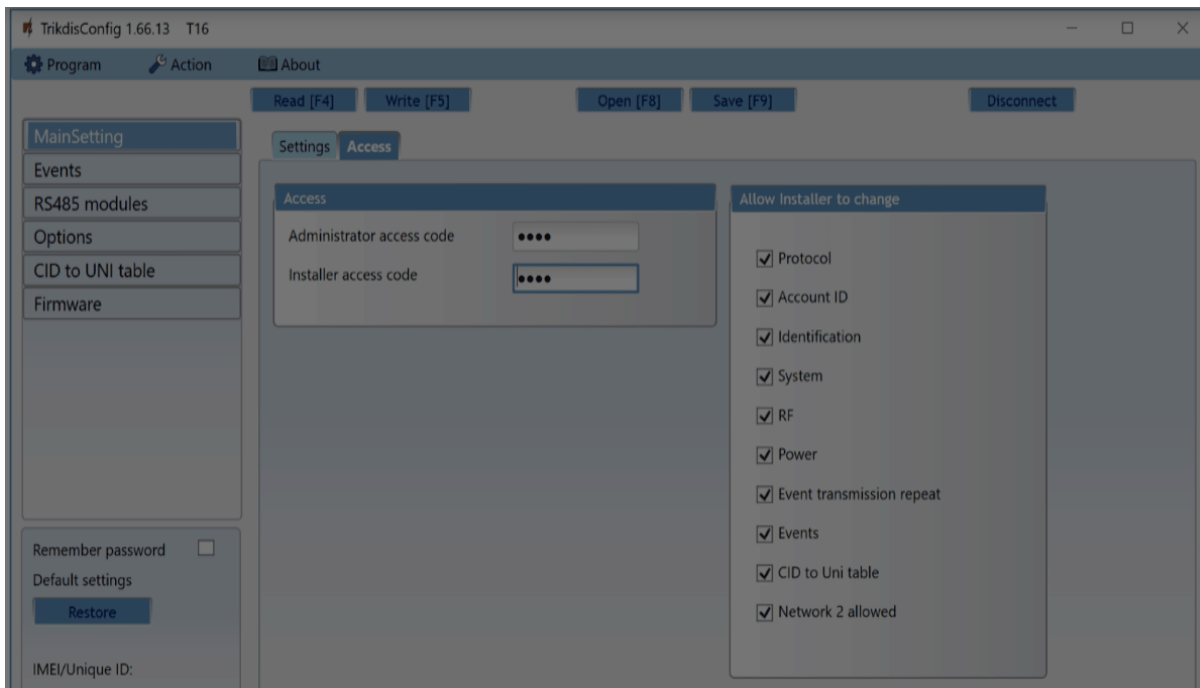
Settings are identical to **Radio frequency 1**.

“Access” tab

Cookie consent

We use cookies to measure the effectiveness of our documentation and whether users find what they're searching for. With your consent, you're helping us to make our documentation better.

- Google Analytics



Settings group "Access"

- **Administrator access code** – grants full access to the transmitter's configuration. The code can be up to 6 symbols long and is made up of numbers or Latin characters. (Default code - 1234).
- **Installer access code** – grants limited access to the transmitter's configuration (factory code - 1234).

Settings group "Allow Installer to change"

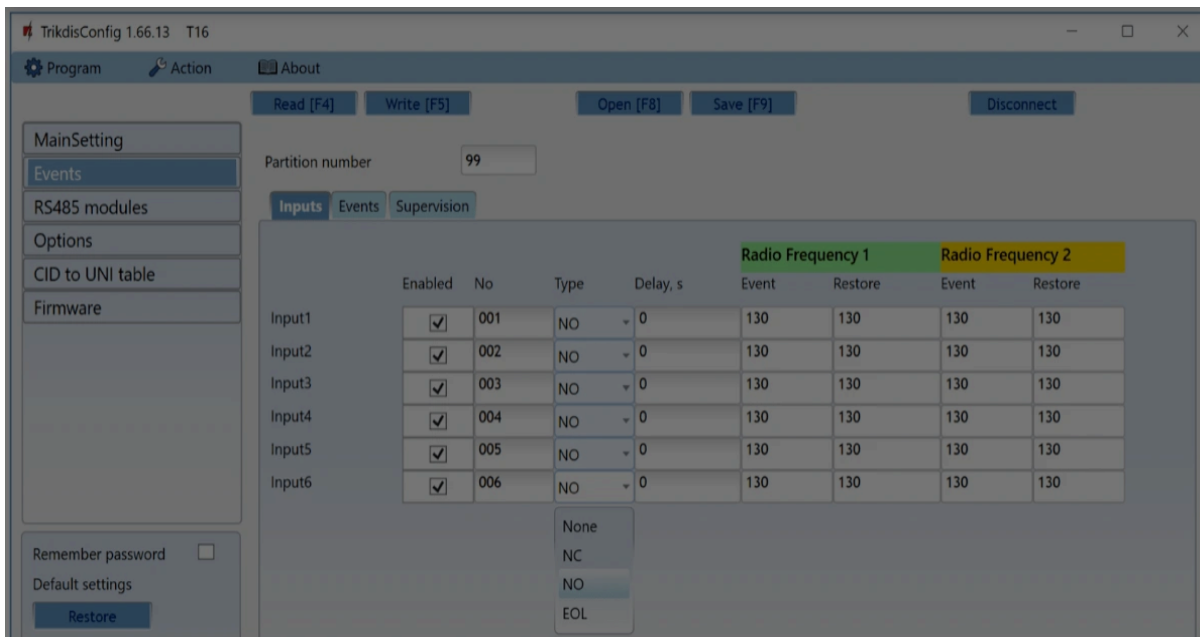
There are two access levels for configuring the radio transmitter T16 (administrator and installer). The administrator has access to all configuration functions. Installer access allows to make limited changes to the transmitter's configuration. The administrator can specify which parameters the installer (user) can change.

3.3 "Events" window

Cookie consent

We use cookies to measure the effectiveness of our documentation and whether users find what they're searching for. With your consent, you're helping us to make our documentation better.

- Google Analytics



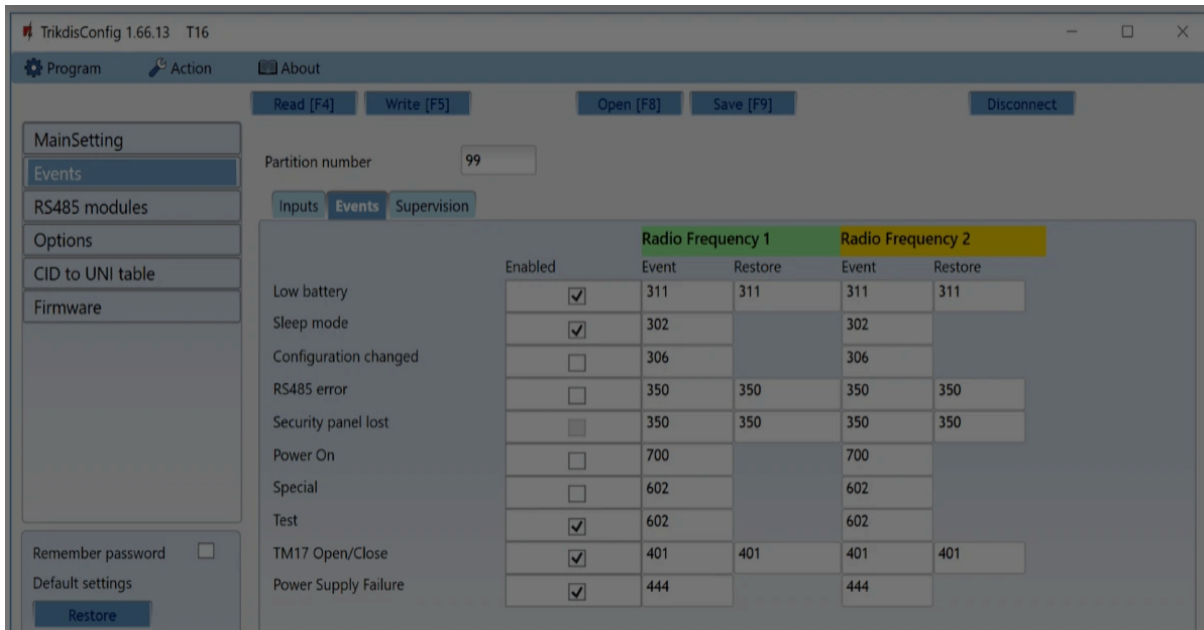
- **Enabled** – tick the box to send events when the input is triggered.
- **No** – assign a number to the input.
- **Type** – specify input type (NO, NC, EOL).
- **Delay** – specify input trigger delay time (s).
- **Event F1** – event code sent using the radio transmitter’s 1st channel (CID code is set automatically).
- **Restore F1** – event restore code sent using the radio transmitter’s 1st channel (CID code is set automatically).
- **Event F2** – event code sent using the radio transmitter’s 2nd channel (CID code is set automatically).
- **Restore F2** – event restore code sent using the radio transmitter’s 2nd channel (CID code is set automatically).

“Events” tab

Cookie consent

We use cookies to measure the effectiveness of our documentation and whether users find what they're searching for. With your consent, you're helping us to make our documentation better.

- Google Analytics

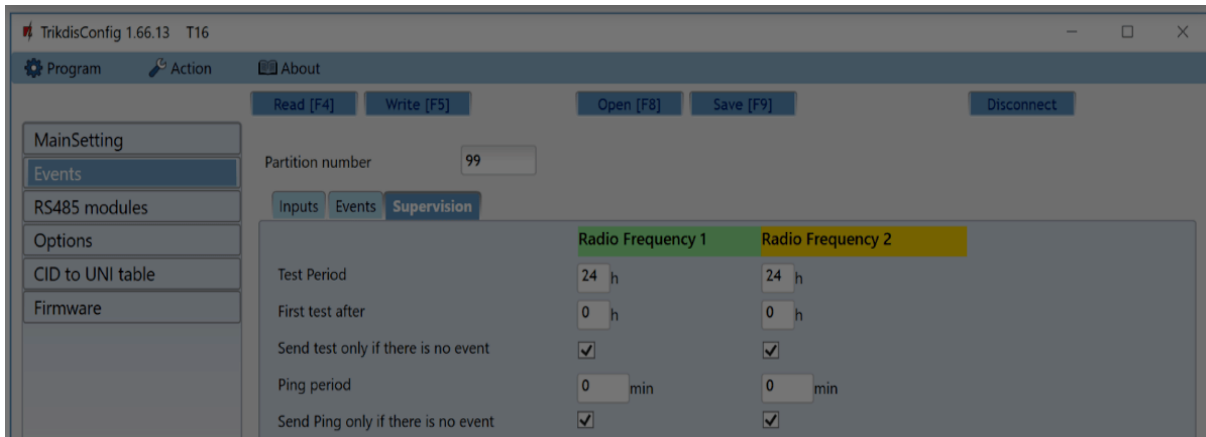


- **Enabled** – tick the box to turn on the sending of internal events:
- **Low battery** – power supply voltage less than 11,5 V.
- **Sleep mode** – power supply voltage less than 10 V.
- **Configuration change** – change in transmitter’s configuration.
- **RS485 error** – problem with devices connected to the RS485 bus.
- **Security panel lost** – lost connection between transmitter and security panel.
- **Power ON** – power turned on for the transmitter.
- **Special** – usage of special code in the radio network, when a radio signal repeater with “listen” and “cancel” modes is used.
- **Test** – periodic test message.
- **TM17 Open/Close** – for sending Open/Close messages when the TM17 reader is used.
- **Power Supply Failure** – power supply failure event is sent when the DC power source voltage is less than 11,5 V when sending messages.
- **Radio frequency 1** – internal event codes that will be sent using the first radio channel after event trigger and restore

Cookie consent

We use cookies to measure the effectiveness of our documentation and whether users find what they're searching for. With your consent, you're helping us to make our documentation better.

- Google Analytics



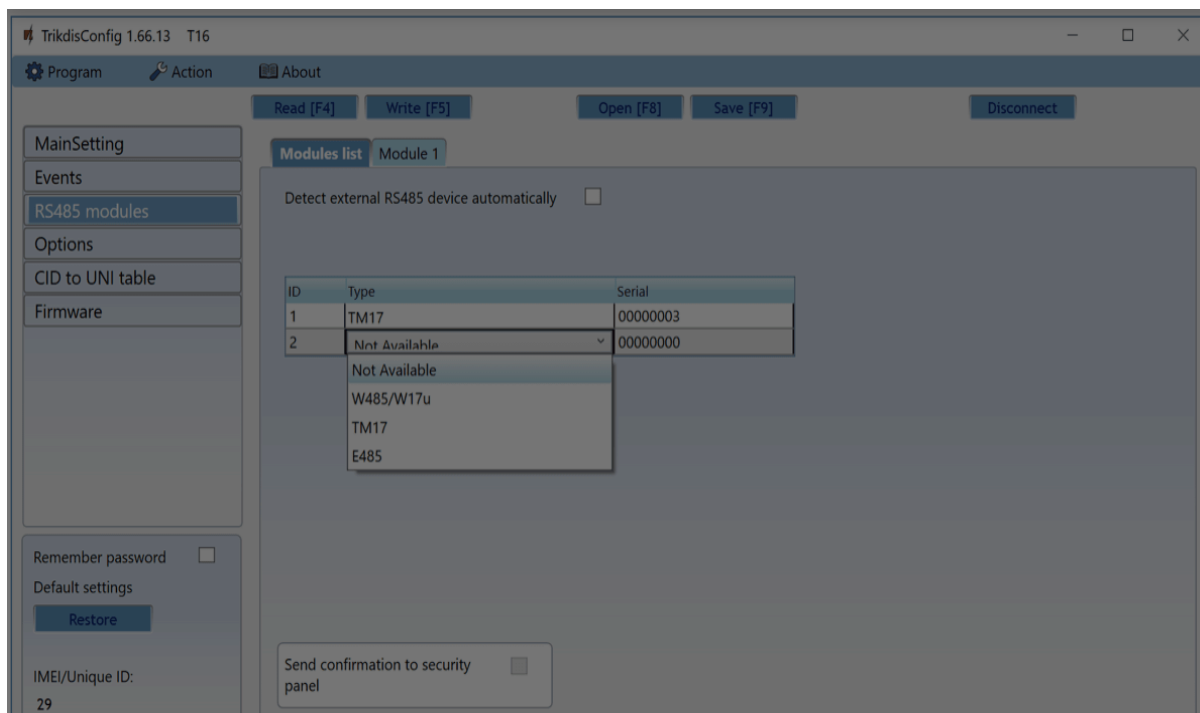
- **Test period** – specify the time interval between two test messages using the 1st and 2nd channels. The purpose of periodic tests is to periodically inspect the functionality of radio systems. A typical test period is 24h. It can be shortened down to 1 hour. CMS monitoring software automatically tracks the test message. A warning is generated if there are no test messages from the object.
- **First test delay** – specify the time for delaying the first message after powering on. The goal is to be able to spread out the sending of messages across the day (24 hours) to avoid network overloads. Specify times for 1st and 2nd channels.
- **Send test only if there is no event** – check the box to send test messages only when there are no event messages being sent.
- **PING period** – specify the time interval for sending PING signals. The main objective of PING messages is to monitor the operation of the protected object's equipment. PING messages are generated in short intervals (every 5-10 minutes) and sent. PING messages are automatically monitored by the CMS receiver. It is important to understand that the radio network is meant to be used for transmitting messages about events, this means that PING messages can only be used for the most important protected objects in a network to avoid a network overload.
- **Send PING only if there is no event** – check the box to send PING signals only when there are no event messages being sent.

3.4 "RS485 modules" window

Cookie consent

We use cookies to measure the effectiveness of our documentation and whether users find what they're searching for. With your consent, you're helping us to make our documentation better.

- Google Analytics



- **Detect external RS485 device automatically** – tick the box to enable automatic identification of modules connected to the RS485 bus.
- **Type** – select the module connected to the transmitter’s RS485 bus from the list.
- **Serial No** – specify the serial number of the connected module. You can find the number on a sticker on the connected module or its packaging.
- **Send confirmation to security panel** – if an IP transmitter (Wi-Fi, LAN) is connected to the T16’s RS485 bus as a main channel, when the box is ticked the control panel receives a confirmation that the sent message was received. This ensures that message transmission is more reliable. Not all panels have this option. If the chosen panel does not have this option, the box will be inactive.

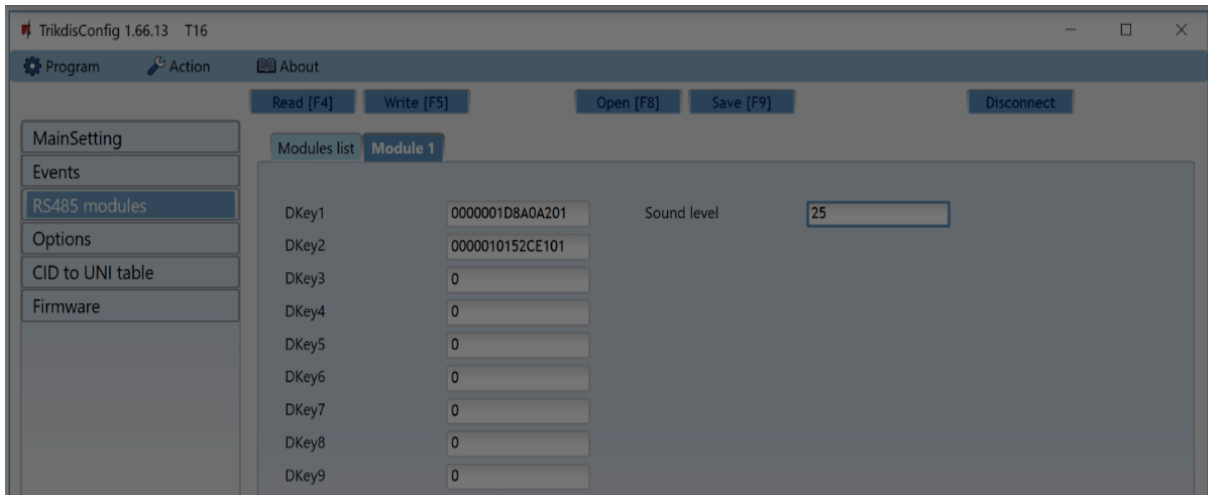
NOTE

You can only connect one of each of TM17 and W485 (or E485) modules to the T16 transmitter.

Cookie consent

We use cookies to measure the effectiveness of our documentation and whether users find what they're searching for. With your consent, you're helping us to make our documentation better.

Google Analytics



It is possible to connect a TM17 reader to the T16 transmitter. After connecting the TM17 reader, the transmitter can be used as a security control panel. Up to 9 contact (iButton) keys can be assigned to the reader (one of which is the “Master key”) for controlling the security system’s state (armed/disarmed).

- **Dkey 1 – Dkey 9** – enter identification numbers of contact (iButton) keys.
- **Sound level** – enter the reader’s audio signal strength level (from 0 to 100).

3.4.1 Adding contact (iButton) keys

1. If the list of contact keys is empty, the first key held against the reader is added, saved to the first line of the list and becomes the **Master key**.
2. To turn on contact key registering mode, you need to hold the **Main key** against the key reader for at least 10 seconds. The “State” indicator will turn off. When registering mode is turned on, the LED indicator on the TM17 reader will begin blinking in green and an audio signal will be played.
3. Hold the key you want to register against the reader. The reader’s audio signal will switch off. The key is now added to the list. Remove the key from the reader. The green indicator on the reader will stop blinking and will light up in solid green. After a few seconds the reader automatically exits key registering mode. The “State” indicator lights up in green and the green LED on the reader switches off.

Cookie consent

We use cookies to measure the effectiveness of our documentation and whether users find what they're searching for. With your consent, you're helping us to make our documentation better.

- Google Analytics



be controlled remotely via a computer network.

3.4.3 Default settings of inputs (IN) and output (OUT)

Terminal	Description
IN1	1st input terminal, selectable types: NC, NO, EOL (2,2 kΩ). (default setting NO). Delay zone. Right after the alarm system is armed, the zone can be violated during the exit time. If the zone remains violated after the exit time, an output OUT1 signal will be formed and a message will be sent. If the zone is violated when the alarm system is armed, counting of entry time begins. If the alarm system is not disarmed during this time, an output OUT1 signal will be formed and a message will be sent.
IN2 (IN3, IN4, IN5, IN6)	2 (3, 4, 5, 6) input terminal, selectable type: NC, NO, EOL (2,2 kΩ). (default setting NO). Instant zone. If the zone is violated when the alarm system is armed, an output OUT1 (or OUT2) signal will be formed and a message will be sent immediately.
OUT1 or	Output terminal, open collector type, current up to 1 A. For connecting a siren. (T16V, T16U)
OUT2	Output terminal, open collector type, current up to 1 A. For connecting a siren. (T16U5)

Blinking LED indicators on the TM17 inform about activated inputs during the time the system is armed. When the alarm is disarmed (by holding a key to the reader), the indicators do not stop blinking. To stop the indicators from blinking, hold the key to the reader again.

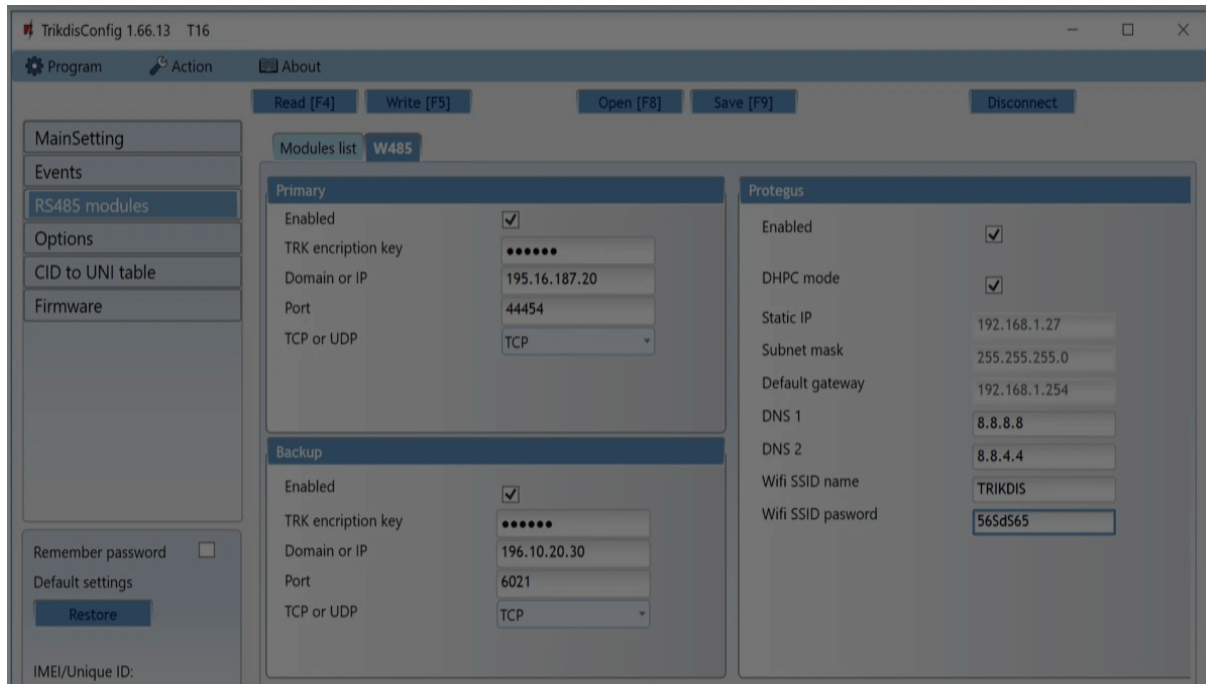
3.4.4 LED indication of operation of the *TM17* reader

Indicator	State	Description
1 (2, 3, 4, 5, 6)	Off	Zone not triggered
1 (2, 3, 4, 5, 6)	Red solid	Zone triggered
1 (2, 3, 4, 5, 6)	Red blinking	Triggered zone caused security system to trigger
State	Green solid	Security alarm area is disarmed
State	Green blinking	Exit time is being counted down

Cookie consent

We use cookies to measure the effectiveness of our documentation and whether users find what they're searching for. With your consent, you're helping us to make our documentation better.

Google Analytics



“W485” tab “Primary” settings group

- **Enabled** - selecting the checkbox will activate the Primary communication channel.
- **TRK encryption key** - 6-digit message encryption key. The key written to the communicator must match the receiver’s key.
- **Domain or IP** - enter the domain or IP address of the receiver.
- **Port** - enter the network port number of the receiver.
- **TCP or UDP** - select in which protocol (TCP or UDP) the events should be sent.

“Backup” settings group

Enable the backup channel mode to send events via backup channel if connection via primary channel is lost. Backup channel settings are same as described above.

“Protegus” settings group

- **Enabled** - enable the Protegus service, the T16 will be able to exchange data with

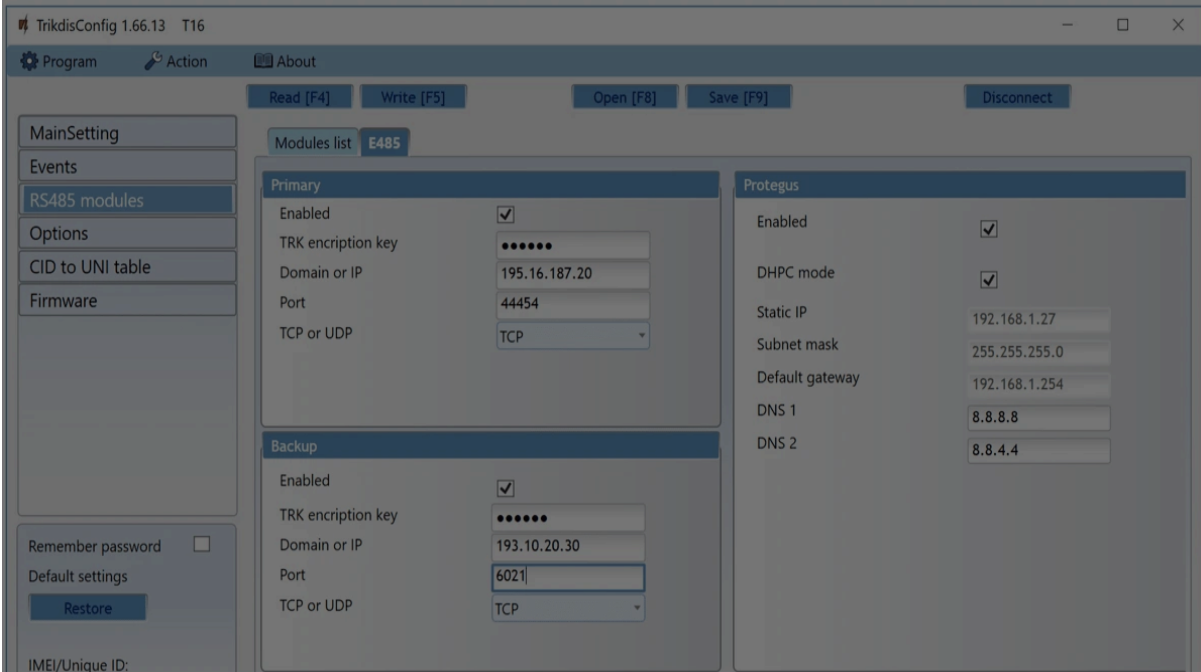
Cookie consent

We use cookies to measure the effectiveness of our documentation and whether users find what they're searching for. With your consent, you're helping us to make our documentation better.

- Google Analytics



- **Wifi SSID name** – name of the WiFi network that the W485 will connect to.
- **Wifi SSID password** - WiFi network password.



“E485” tab “Primary” settings group

- **Enabled** - selecting the checkbox will activate the Primary communication channel.
- **TRK encryption key** - 6-digit message encryption key. The key written to the communicator must match the receiver’s key.
- **Domain or IP** - enter the domain or IP address of the receiver.
- **Port** - enter the network port number of the receiver.
- **TCP or UDP** - select in which protocol (TCP or UDP) the events should be sent.

“Backup” settings group

Enable the backup channel mode to send events via backup channel if connection via primary channel is lost. Backup channel settings are same as described above.

Cookie consent

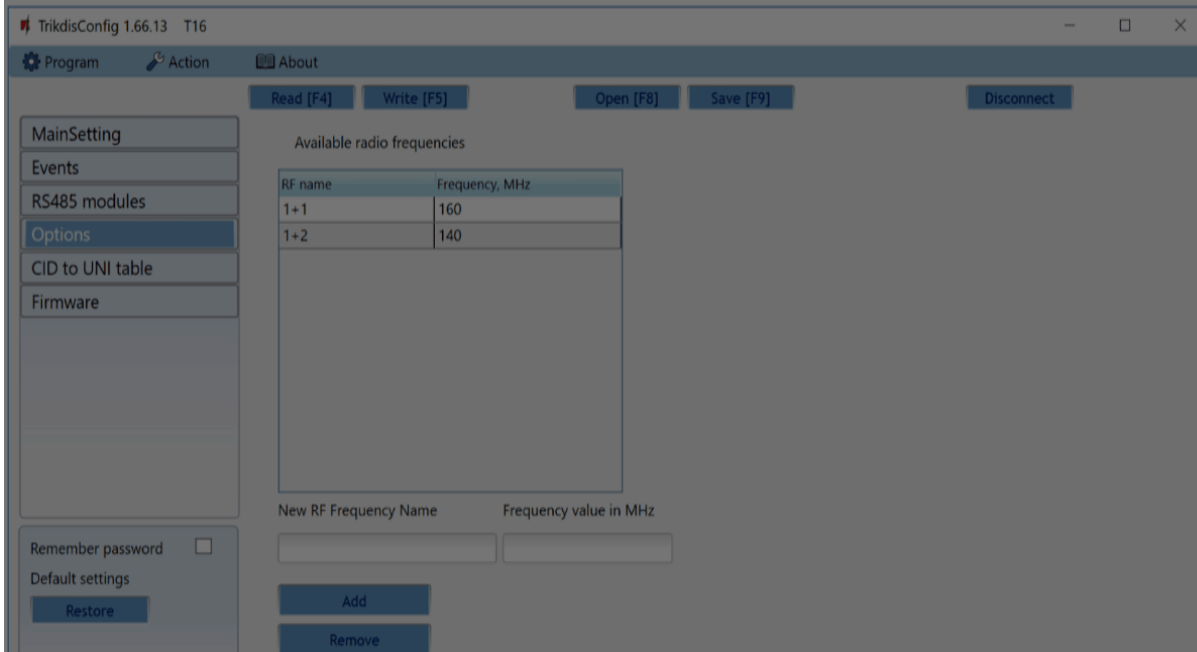
We use cookies to measure the effectiveness of our documentation and whether users find what they're searching for. With your consent, you're helping us to make our documentation better.

- Google Analytics



- **DNS1, DNS2** - (Domain Name System) identifies the server that specifies the IP address of the domain. Used when domain is set in the communication channel **Domain or IP** field (not IP address). Google DNS server is set by default.

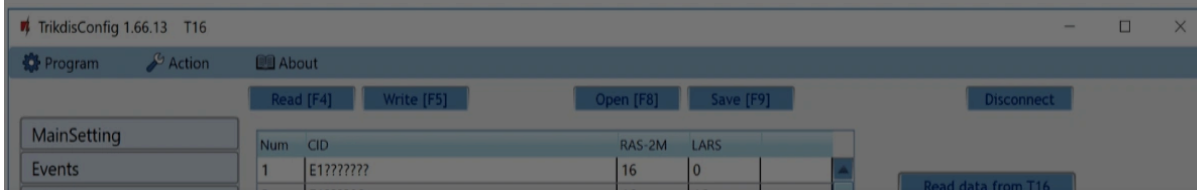
3.5 “Options” window



Settings group “Available radio frequencies”

You can add/delete radio frequencies that the T16 transmitter can use to/from the list. Radio frequencies are given “Names”.

3.6 “CID to UNI table” window



Cookie consent

We use cookies to measure the effectiveness of our documentation and whether users find what they're searching for. With your consent, you're helping us to make our documentation better.

- Google Analytics



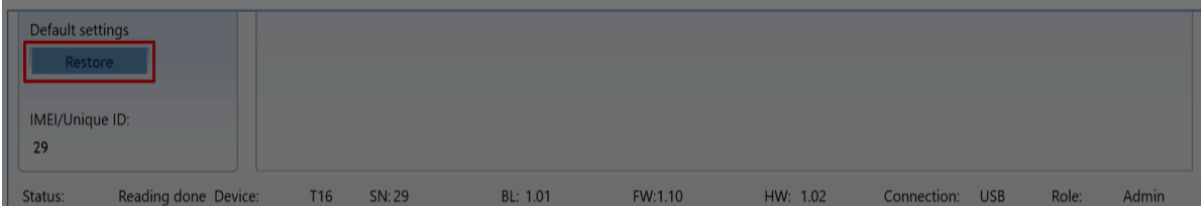
Contact ID codes received from the security system's control panel are converted to the radio system's (RAS2M, LARS) codes. Only Contact ID messages described in the table (CID column) are converted to the radio system's codes and sent to the CMS. The "?" symbol indicates any number in this position. The "z" symbol means that the number in the position is added to the main radio system code. The table is editable, but please change it responsibly and only if it is mandatory to do so, because if there are errors in the table, the system might not work properly.

NOTE

After finishing configuration, click **Write [F5]**, wait for the data to be saved and disconnect the USB cable.

3.7 Restoring default settings

To restore the **transmitter's** factory settings, click the button **Restore** in the TrikidisConfig program.



4. Testing of the T16 RF transmitter

When configuration and installation are finished, perform a system check:

1. Check if the power is turned on;
2. To test the T16's inputs, enable them and make sure the correct messages reach the CMS receiver;

Cookie consent

We use cookies to measure the effectiveness of our documentation and whether users find what they're searching for. With your consent, you're helping us to make our documentation better.

Google Analytics



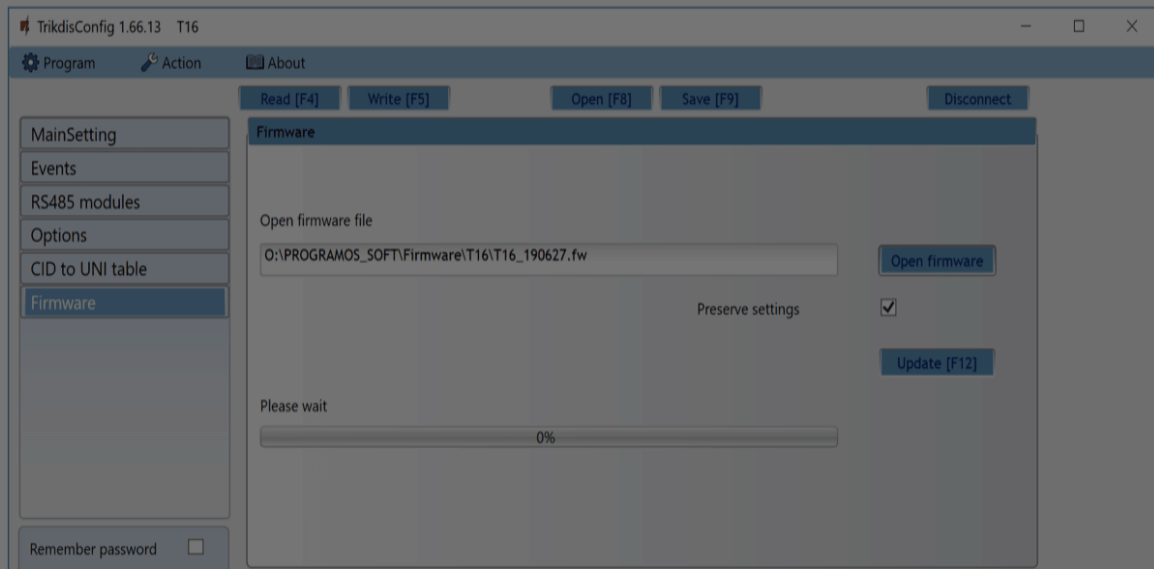
5. Updating firmware

NOTE

After connecting the T16 to TrikdisConfig, the program will automatically offer to update the device's firmware if updates are available. This function requires an internet connection. / If antivirus software is installed on your computer, it may block the automatic firmware update function. In this case you will have to reconfigure your antivirus software.

The T16's firmware can be updated or changed manually. All prior settings of the T16 will remain after the update if the box **"Preserve settings"** is ticked. If the firmware is installed manually, it can be changed to a newer or an older version. Perform these steps:

1. Launch TrikdisConfig.
2. Using a USB Mini-B cable, connect the T16 to a computer. If a newer version of firmware is available, the program will automatically offer to install it.
3. Choose **Firmware**.



Cookie consent

We use cookies to measure the effectiveness of our documentation and whether users find what they're searching for. With your consent, you're helping us to make our documentation better.

Google Analytics



6. Safety precautions

The RF transmitter should be installed and maintained only by qualified personnel.

Please read this manual carefully prior to installation in order to avoid mistakes that can lead to malfunction or even damage to the equipment.

Always disconnect the power supply before making any electrical connections.

Any changes, modifications or repairs not authorized by the manufacturer shall render the warranty void.

Cookie consent

We use cookies to measure the effectiveness of our documentation and whether users find what they're searching for. With your consent, you're helping us to make our documentation better.

Google Analytics