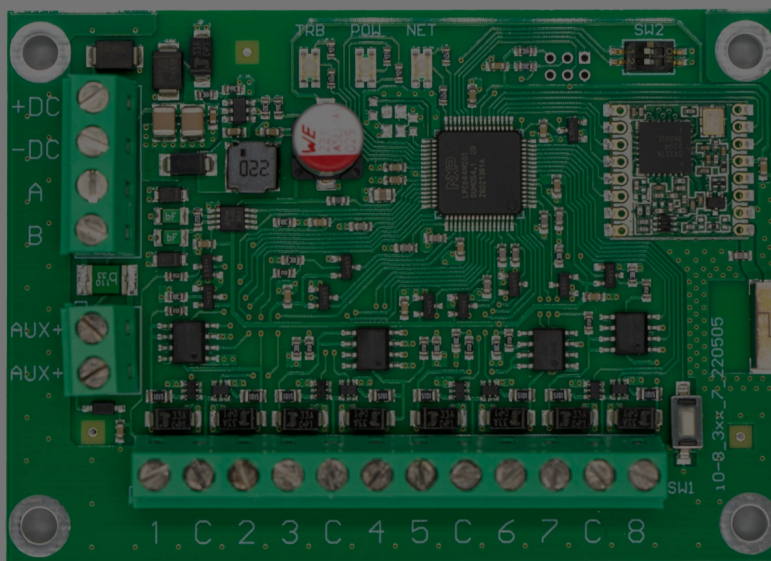


iO8-LoRa Wireless Expander



1. Description

iO-8-LORA wireless expanders with RF-LORA transceiver increase the number of inputs and outputs of the "FLEXi" SP3 security panel using two-way RF communication.

Compatible with the SP3 security control panel and GATOR Cellular gate & door access controller. The iO-8-LORA wireless expander has 8 I/O terminals, each of which can be set as an input (IN) or as an output (OUT).

1.1 Features

Communication:

- Line-of-sight wireless range up to 5000 m.
- Up to 8 *iO-8-LORA* wireless expanders can be connected to the "FLEXi" SP3 control panel.

Cookie consent

We use cookies to measure the effectiveness of our documentation and whether users find what they're searching for. With your consent, you're helping us to make our documentation better.

Google Analytics

Accept

Reject



- The iO-8-LORA wireless expander is connected to the "FLEXi" SP3 control panel via the RF-LORA transceiver.

1.2 Specifications

Parameter	Description
Transmission frequency	4F modification: 433,3 - 434,7 MHz / 8F modification: 867 - 869 MHz
Modulation type	LORA
Power supply voltage	10-26 V DC
Current consumption	Up to 50 mA (stand-by) / Up to 120 mA (short-term, while sending)
Report encryption	Yes
Range in open space	Up to 5000 m
Dual purpose terminals [I/O]	8, IN or OUT function selected during programming. When IN is selected, available types: NC, NO, EOL, EOL_T, 3EOL, ATZ, ATZ_T. When OUT is selected, the terminal becomes open collector (OC) type with up to 100 mA current
Operating environment	Temperature from -20 °C to +50 °C, relative humidity - up to 80% at +20 °C
Dimensions	65 x 90 x 12 mm
Weight	80 g

1.3 Expander elements

Note:

1.4 Purpose of terminals

Terminal	Description
+DC	Power terminal (10-26 V DC positive)
-DC	Power terminal (109-26 V DC negative)

Cookie consent

We use cookies to measure the effectiveness of our documentation and whether users find what they're searching for. With your consent, you're helping us to make our documentation better.

Google Analytics

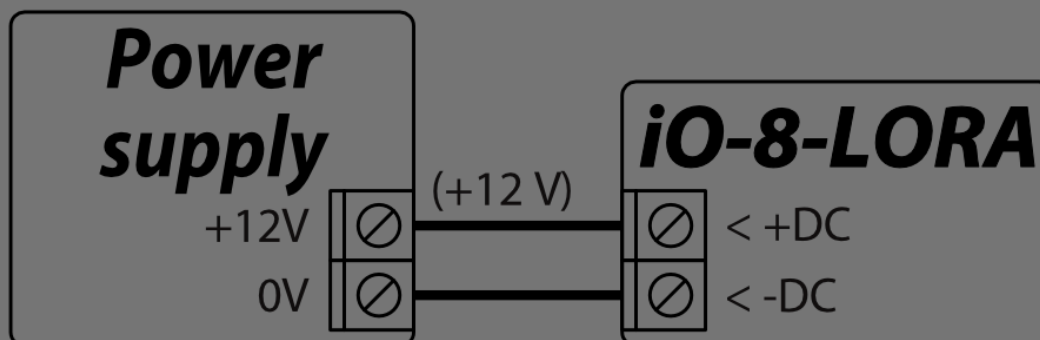


1.5 LED indication of operation

Indicator	Light status	Description
NETWORK	Off	No RF signal
NETWORK	Green blinking	RF signal level from 0 to 10. Sufficient strength is 3
POWER	Off	No supply voltage
POWER	Green blinking	Normal supply voltage level
POWER	Yellow blinking	Low supply voltage level (≤ 11.5 V)

2. Wiring schematics

2.1 Schematic for connecting the power supply



2.2 Schematics for connecting inputs

There are 8 terminals IO1–IO8 (inputs) on the iO-8-LORA expander board for connecting sensor circuits. Any terminal can be set as an input and assigned zone attributes: circuit type (NO, NC, EOL, EOL_T, 3EOL, ATZ, ATZ_T); sensitivity to temporary circuit events; zone function (Delay, Instant, Instant Stay, Interior, Interior Stay, Fire, Keypress, 24_hour, Silent, Silent 24h).

Normalv

Normalv

Cookie consent

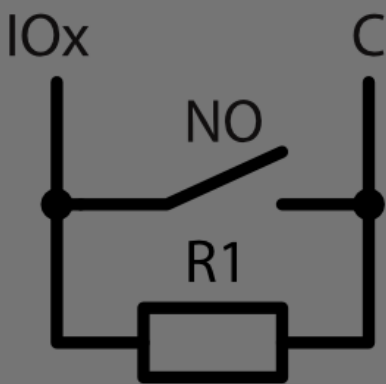
We use cookies to measure the effectiveness of our documentation and whether users find what they're searching for. With your consent, you're helping us to make our documentation better.

Google Analytics

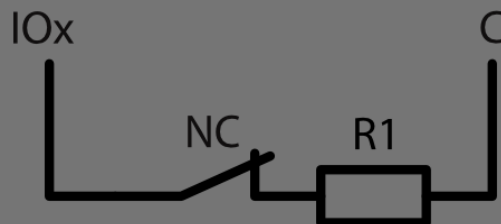


RT	R1	R2
2.2k	2.2k	4.7k
1k	1k	2.2k
5.6k	5.6k	3.3k
5.6k	3.3k	5.6k
3.3k	6.8k	3.3k
2.2k	4.7k	8.2k

Normaly open with End of line resistor (EOL)



Normaly closed with End of line resistor (EOL)



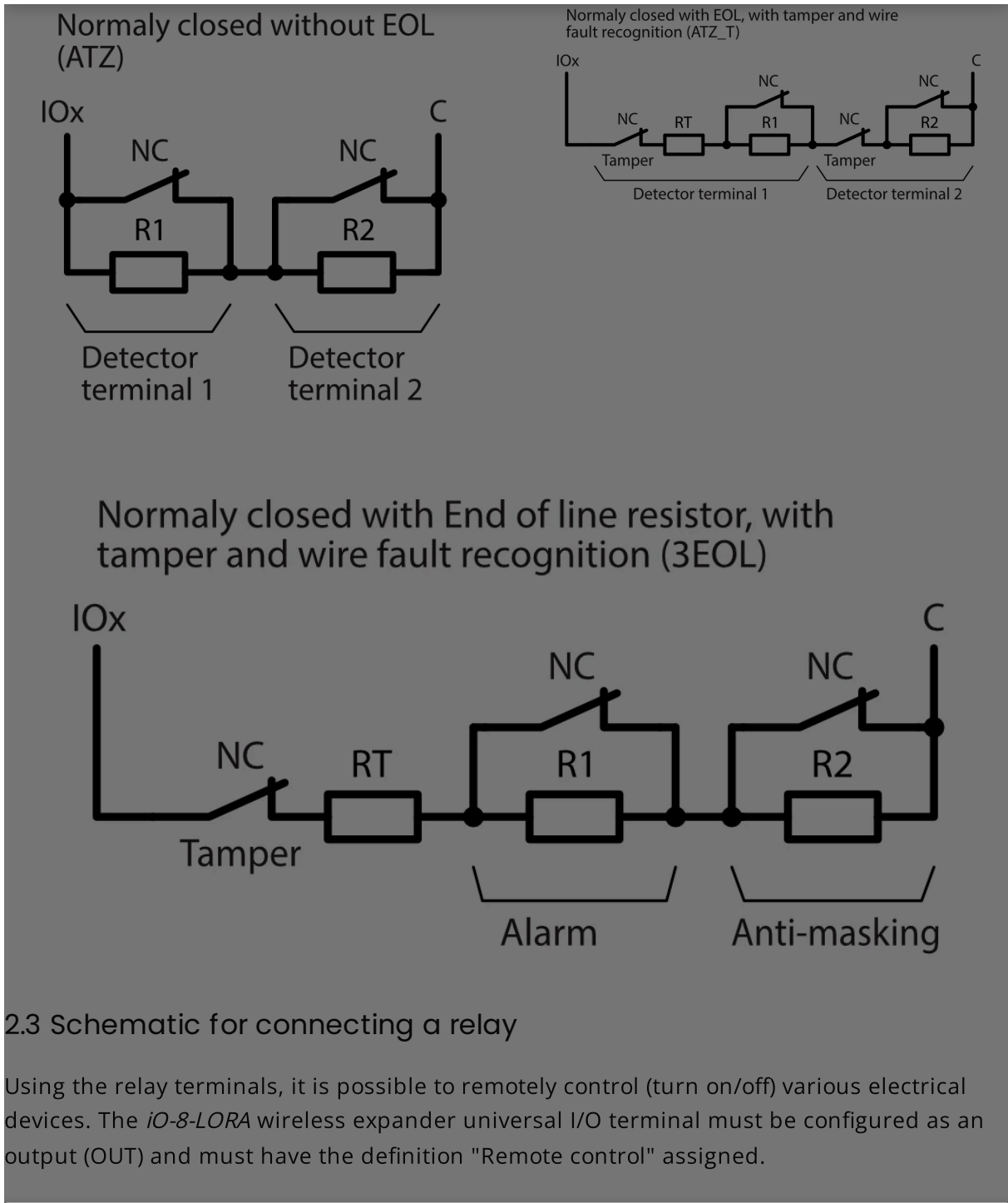
Normaly closed with End of line

Cookie consent

We use cookies to measure the effectiveness of our documentation and whether users find what they're searching for. With your consent, you're helping us to make our documentation better.

- Google Analytics





2.3 Schematic for connecting a relay

Using the relay terminals, it is possible to remotely control (turn on/off) various electrical devices. The *iO-8-LORA* wireless expander universal I/O terminal must be configured as an output (OUT) and must have the definition "Remote control" assigned.

Cookie consent

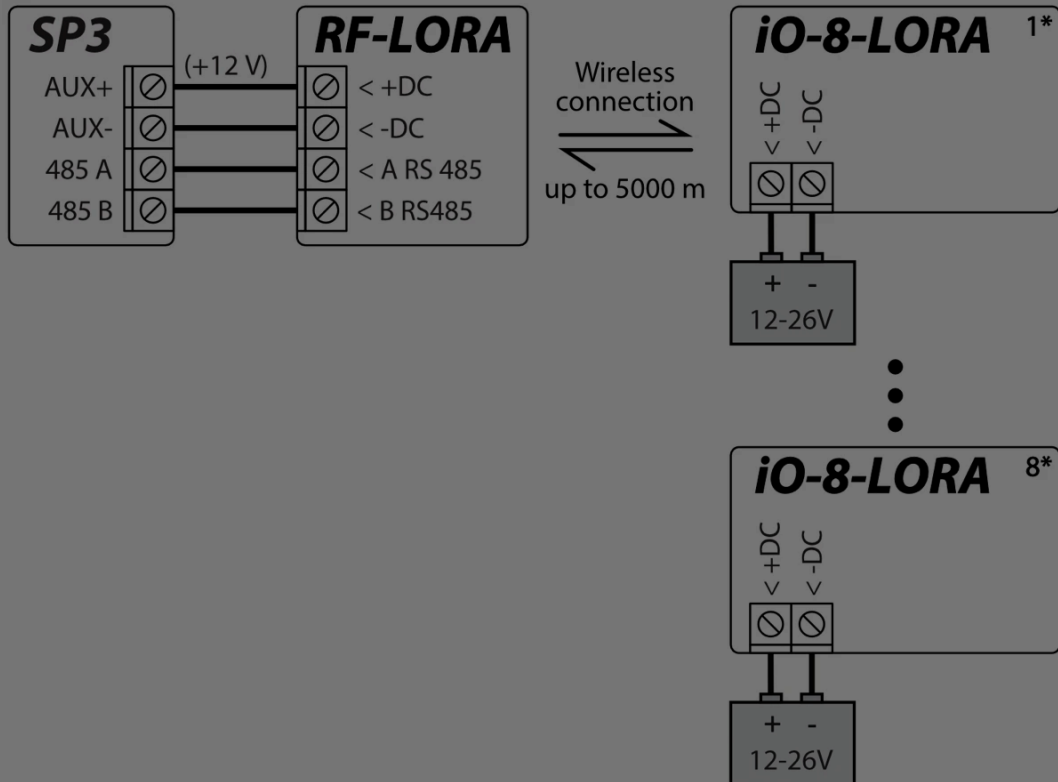
We use cookies to measure the effectiveness of our documentation and whether users find what they're searching for. With your consent, you're helping us to make our documentation better.

- Google Analytics





2.4 Schematic for connecting iO-8-LORA expanders to the control panel "FLEXi" SP3



NOTE

An RF-LORA transceiver must be connected to the "FLEXi" SP3 security panel and then up to 8 pcs. can be connected iO-8-LORA wireless expanders.

3. Security control panel "FLEXi" SP3

1. An RF-LORA transceiver must be connected to the "FLEXi" SP3 control panel.

Cookie consent

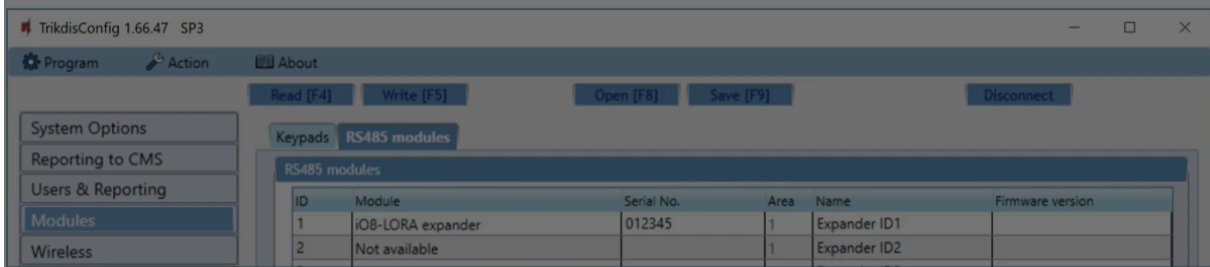
We use cookies to measure the effectiveness of our documentation and whether users find what they're searching for. With your consent, you're helping us to make our documentation better.

- Google Analytics

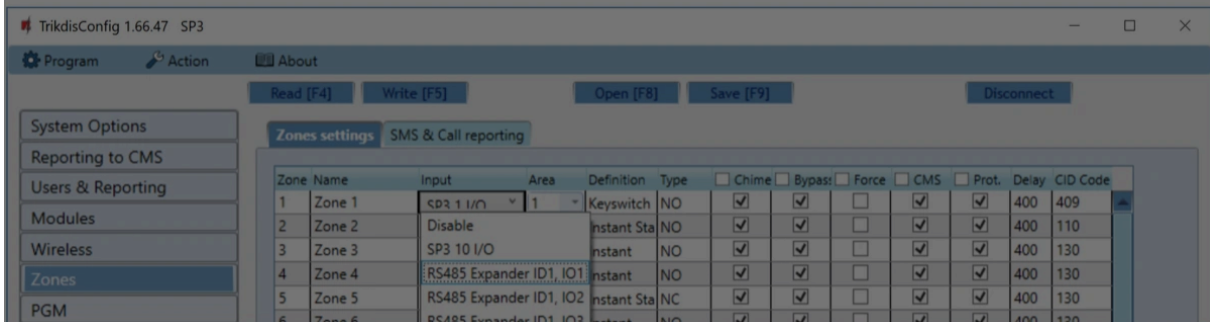


7. In the "**Modules**" list, select "**iO-8-LORA expander**".

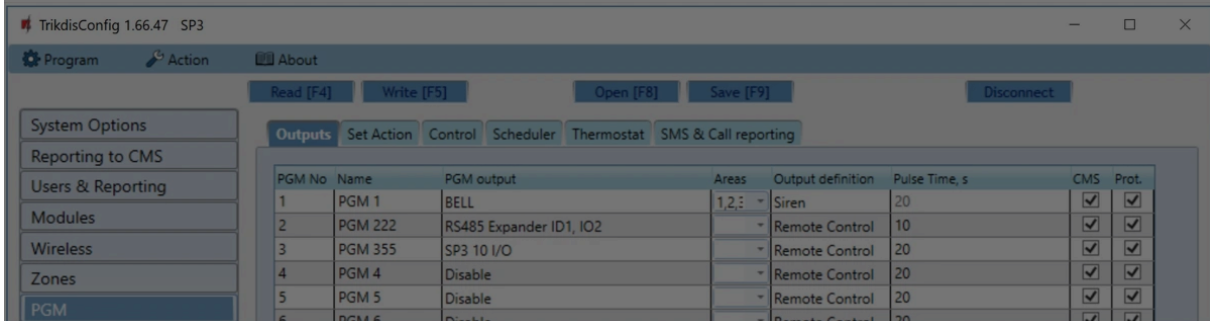
8. In the "**Serial No.**" field, enter the serial number of the module iO-8-LORA.



9. In the "**Zones**" tab, make settings for the expander's inputs.



10. In the "**PGM**" tab, configure the expander's PGM outputs.



11. Once configuration is complete, click the **Write [F5]** button.

12. Wait for the updates to finish.

Cookie consent

We use cookies to measure the effectiveness of our documentation and whether users find what they're searching for. With your consent, you're helping us to make our documentation better.

Google Analytics



Please read this manual carefully prior to installation in order to avoid mistakes that can lead to malfunction or even damage to the equipment.

Always disconnect the power supply before making any electrical connections.

Any changes, modifications or repairs not authorized by the manufacturer shall render the warranty void.

Please adhere to your local waste sorting regulations and do not dispose of this equipment or its components with other household waste.

Cookie consent

We use cookies to measure the effectiveness of our documentation and whether users find what they're searching for. With your consent, you're helping us to make our documentation better.

Google Analytics

