

GATE CONTROLLERS

# GATOR Cellular Gate Controller



## I. Description

### Cookie consent

We use cookies to measure the effectiveness of our documentation and whether users find what they're searching for. With your consent, you're helping us to make our documentation better.

Google Analytics

Accept

Reject



internet without using SIM card mobile data. By connecting the RF- LORA transceiver, you can connect the iO8-LORA wireless expander (1 pc.) and iO-LORA wireless expanders (up to 8 pcs.) to the GATOR controller. RFID readers connected to the iO-LORA wireless expansion modules can control up to 8 PGM outputs (GATOR controller program version from 2.13). One iO-LORA expander with an RFID reader controls only one PGM output.

## 1.1 Features

### Remote control

- With Mobile/Internet application *Protegeus2*.
- With SMS messages.
- With phone call.

### Messages for users

- Sends messages about events to the *Protegeus2* application or with text SMS messages.

### Messages for the safety company

- Sends event information in Contact ID codes to TRIKDIS software and hardware receivers, which work with any monitoring software.
- Can simultaneously send event messages to the receiver of the safety company and work with the *Protegeus2* app.
- If connection with the main receiver is lost, the messages are automatically sent to a backup receiver.

### Inputs and outputs

- 2 inputs (IN), of selectable type: NO; NC; EOL.
- 2 universal inputs/outputs. Mode of operation is set as either input or output.
- 1 output (OUT) - relay.
- With the iO-LORA expander you can additionally add one input and one PGM output

### Cookie consent

We use cookies to measure the effectiveness of our documentation and whether users find what they're searching for. With your consent, you're helping us to make our documentation better.

- Google Analytics



- Addition of new users and deletion of existing users can be done with the Protegus2 app (when logged in with administrator rights), SMS message, TrikdisConfig software.
- Device can be configured either by connecting a USB Mini-B cable or remotely with the TrikdisConfig software.
- Remote updating of firmware.
- Two access levels for configuring the device, for the installer and for the administrator.

## 1.2 Specifications

Parameter	Description
2G Cellular modem frequencies	850 / 900 / 1800 / 1900 MHz
LTE modem frequencies: EU (Europe) LA (Latin America)	LTE-FDD: B1/B3/B5/B7/B8/B20/B28 LTE-FDD: B2/B3/B4/B5/B7/B8/B28/B66
Power supply voltage	9-32 V DC 12-24 V AC
Current consumption	100 mA
Inputs	2, selectable type: NC, NO, EOL=10 kΩ
Universal inputs/outputs	2, can be set either as input IN with type: NC, NO, EOL=10 kΩ, or output OUT (open collector (OC) 50 mA)
Output	1, relay, 1 A 30 V DC, 0,5 A 125 V AC
Unsent events memory	Up to 60 events
Event log memory	Up to 5000 events
Users who receive messages and have permission to control	7
Users who have permission to control	1000
Operating environment	Temperature from -20 °C to +50 °C, relative humidity – up to 80% at +20 °C
Dimensions	92 x 62 x 26 mm
Weight	80 g

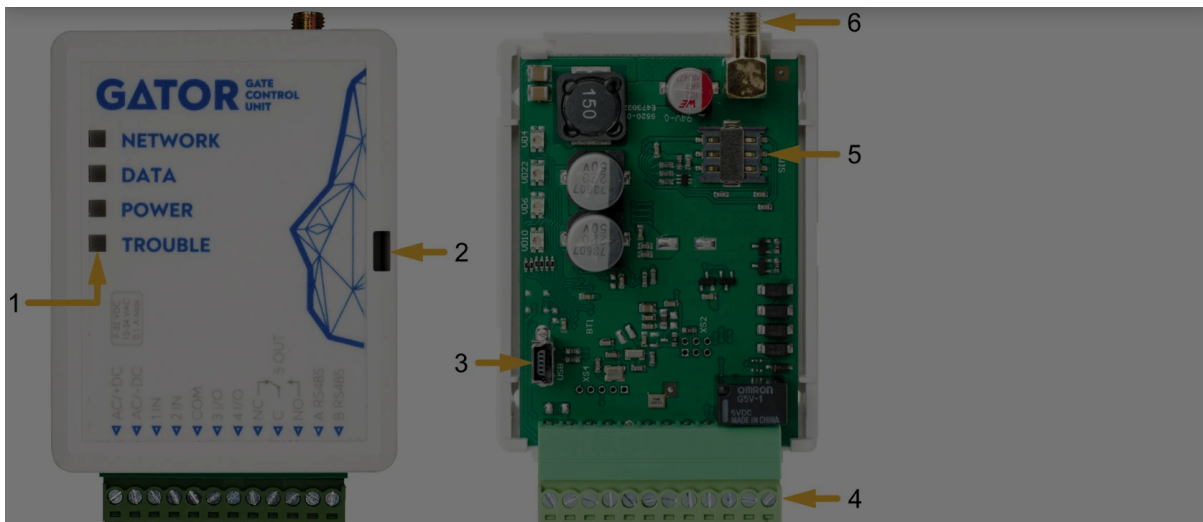
## 1.3 Controller elements

### 1. Light indicators

### Cookie consent

We use cookies to measure the effectiveness of our documentation and whether users find what they're searching for. With your consent, you're helping us to make our documentation better.

Google Analytics



### 1.4 Purpose of terminals

Terminal	Description
AC/+DC	Power terminal (9-32 V DC positive; 12-24 V AC)
AC/-DC	Power terminal (9-32 V DC negative; 12-24 V AC)
1 IN	1 <sup>st</sup> input, of selectable type NO, NC, EOL (factory setting: NO)
2 IN	2 <sup>nd</sup> input, of selectable type NO, NC, EOL (factory setting: Disabled)
COM	Common terminal
3 I/O	Input/output (factory setting: Disabled)
4 I/O	Input/output (factory setting: Disabled)
NC	Relay terminal NC
C	Relay terminal C
NO	Relay terminal NO
A RS485	Contact A of RS485 bus
B RS485	Contact B of RS485 bus

### Cookie consent

We use cookies to measure the effectiveness of our documentation and whether users find what they're searching for. With your consent, you're helping us to make our documentation better.

- Google Analytics





## 1.5 LED indication of operation

Indicator	Light status	Description
NETWORK	Green solid	Connected to Cellular network
NETWORK	Yellow blinking	Indication of Cellular signal strength from 0 to 5. Sufficient strength is 3.
DATA	Green solid	Message is being sent
DATA	Yellow solid	There are unsent event messages in the data buffer
POWER	Green blinking	The power supply voltage is sufficient
POWER	Yellow blinking	The power supply voltage is insufficient
POWER	Red and yellow blinking	Configuration mode is on
TROUBLE	Off	No operation problems
TROUBLE	1 blink	No SIM card inserted
TROUBLE	2 blinks	The PIN code of the SIM card is incorrect
TROUBLE	3 blinks	Unable to connect to Cellular network
TROUBLE	4 blinks	Unable to connect to GATOR or to the primary IP receiver
TROUBLE	5 blinks	Unable to connect to the backup IP receiver
TROUBLE	6 blinks	Internal clock is not set
TROUBLE	7 blinks	The power supply voltage is insufficient

If the LED indication is not working, check the power supply and connections.

### Cookie consent

We use cookies to measure the effectiveness of our documentation and whether users find what they're searching for. With your consent, you're helping us to make our documentation better.

Google Analytics

**NOTE**

Before beginning installation, make sure that you have the necessary components:

1. USB Mini-B type cable for configuration.
2. Cable consisting of at least 4 wires for connecting the controller.
3. Flat-head 2,5 mm screwdriver.
4. External Cellular antenna if reception is weak in the area.
5. Activated nano-SIM card (can have turn off PIN code requests).
6. Instruction manual for the automatic gate to which the Cellular gate controller is about to be connected.

Order the necessary components separately from your local retailer.

## 1.6 Cellular gate controller *GATOR* standard packing list

- Cellular gate controller <b>GATOR</b>	<b>1 pc.</b>
- Cellular antenna	1 pc.
- Resistor 10 kΩ	3 pcs.
- Double-sided adhesive tape (5 cm)	1 pc.
- Screw	2 pcs.

## 2. Wiring schematics for the Cellular gate controller

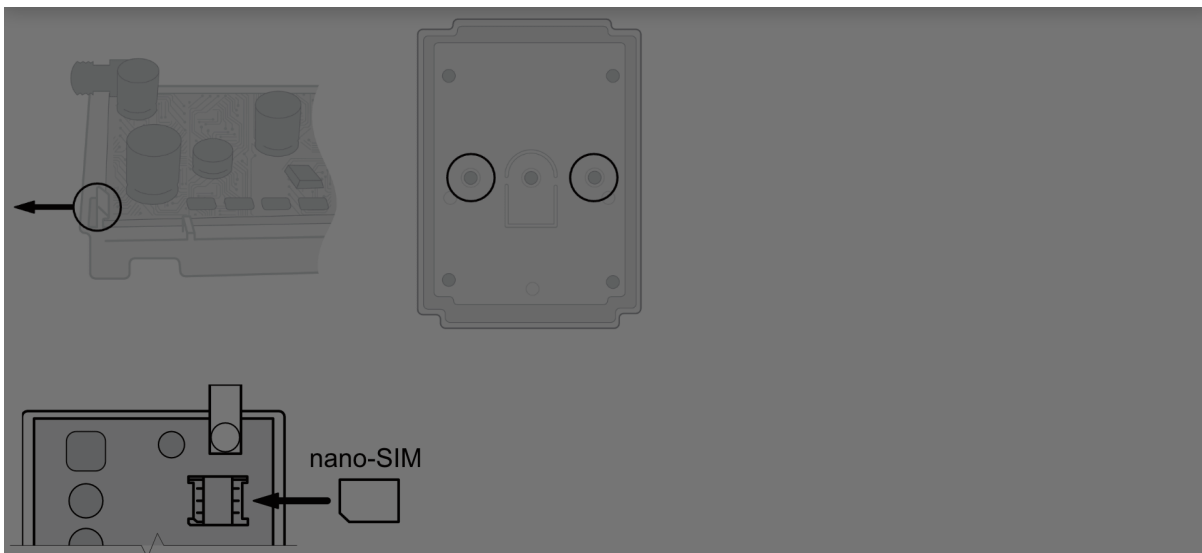
### 2.1 Fastening

1. Remove the top lid. Pull out the plug part of the terminal block.
2. Remove the PCB board.

### Cookie consent

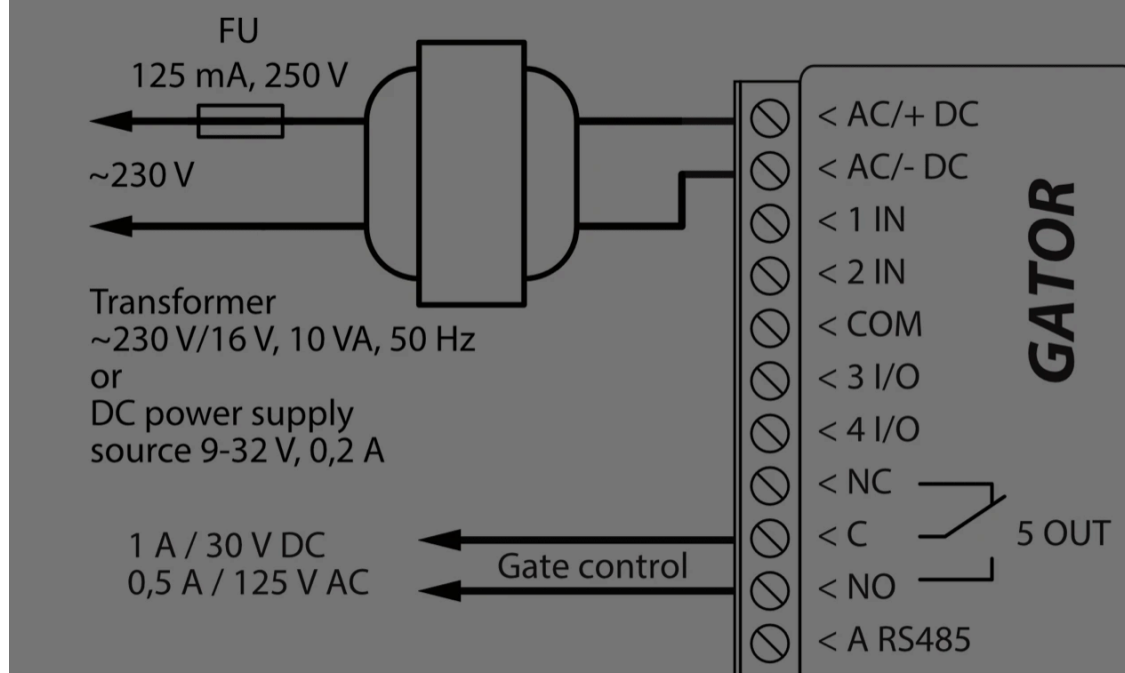
We use cookies to measure the effectiveness of our documentation and whether users find what they're searching for. With your consent, you're helping us to make our documentation better.

- Google Analytics



## 2.2 Schematic for connecting the power supply

Using wires, connect the controller according to the schematic shown below.

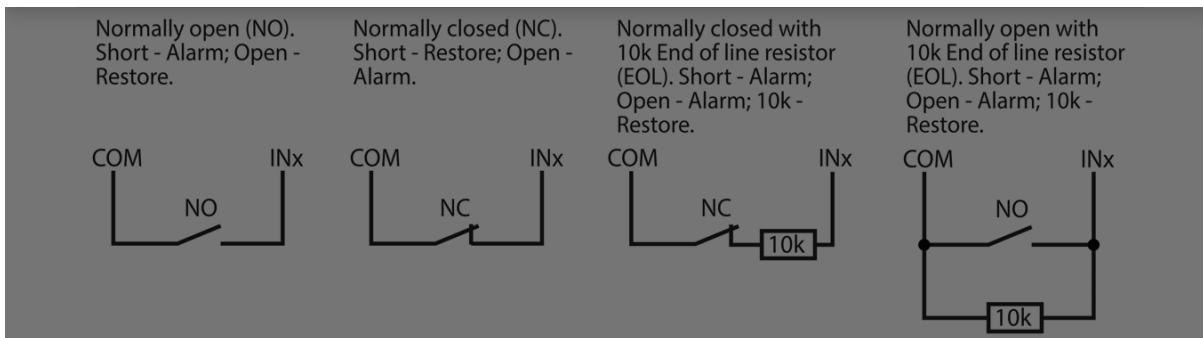


### Cookie consent

We use cookies to measure the effectiveness of our documentation and whether users find what they're searching for. With your consent, you're helping us to make our documentation better.

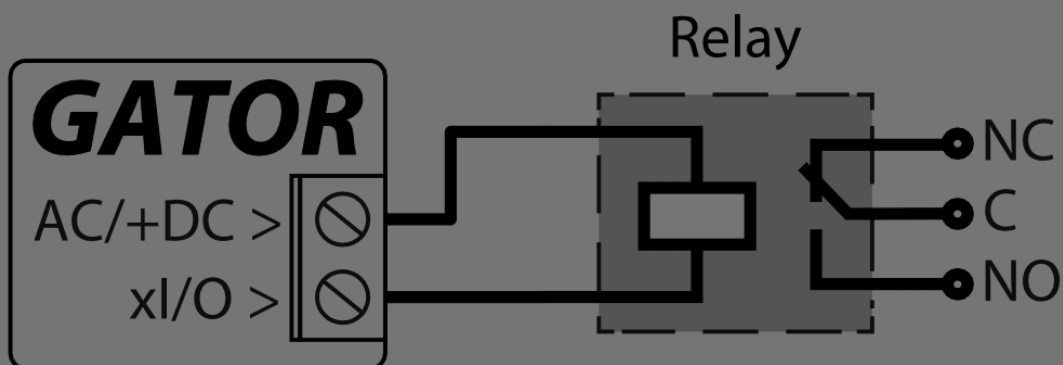
- Google Analytics





## 2.4 Schematic for connecting the relay

Above is the schematic for connecting the relay when the controller is connected to a DC power source. Using the terminals of the relay, it is possible to remotely control (turn on/off) various electric devices. The I/O terminal of the controller must be set to an output (OUT) mode.



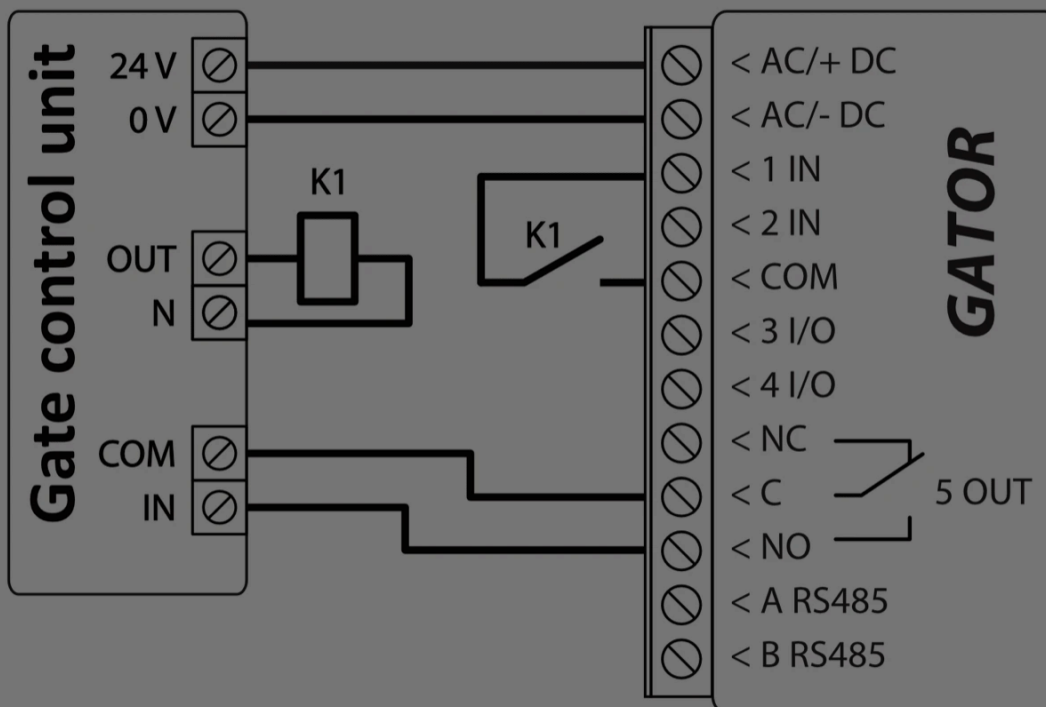
### Cookie consent

We use cookies to measure the effectiveness of our documentation and whether users find what they're searching for. With your consent, you're helping us to make our documentation better.

- Google Analytics



## 2.5 Schematic for connecting an automatic gate opener to the controller



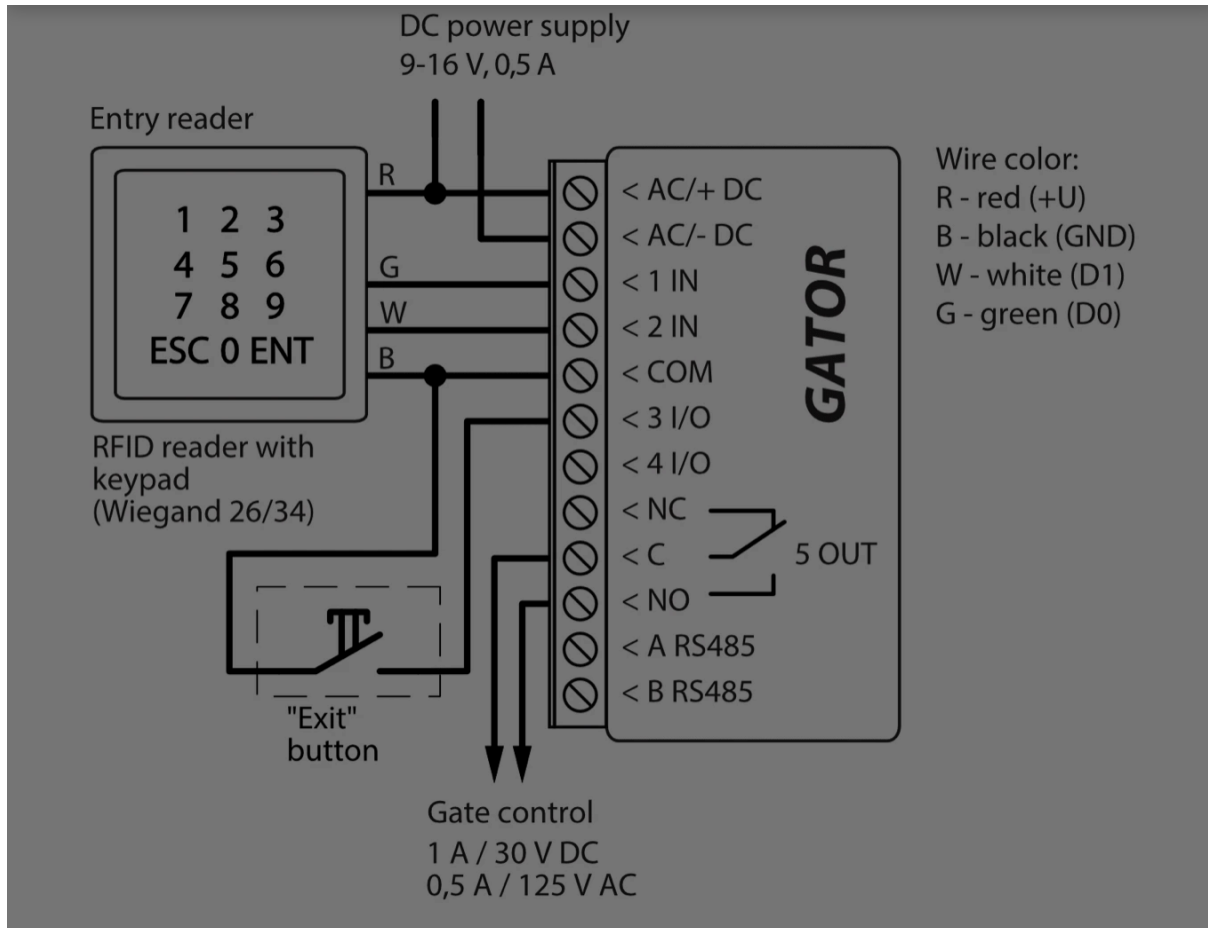
All wiring should be done with the power supply disconnected. / The purposes and voltages of the automatic gate opener's terminals are described in detail in the automatic gate's manual. / The automatic gate's IN, COM terminals are used for controlling the gates. / The automatic gate has a gate state output (OUT) that shows when the gates are closed and when they are open. The gate's state output can be a voltage output or a relay output. In the schematic, relay K1 is connected to a voltage automated gate output. There is voltage (~230V) between the voltage outputs OUT and N of the automated gates when the gates are open. The intermediate relay K1 is turned on when the gates are open and it activates the controller's 1IN input. The state of the controller's 1IN input gives precise information about the state of the gates (when the gates are closed and when they are open).

## 2.6 Schematic for connecting for RFID reader (Wiegand 26/34)

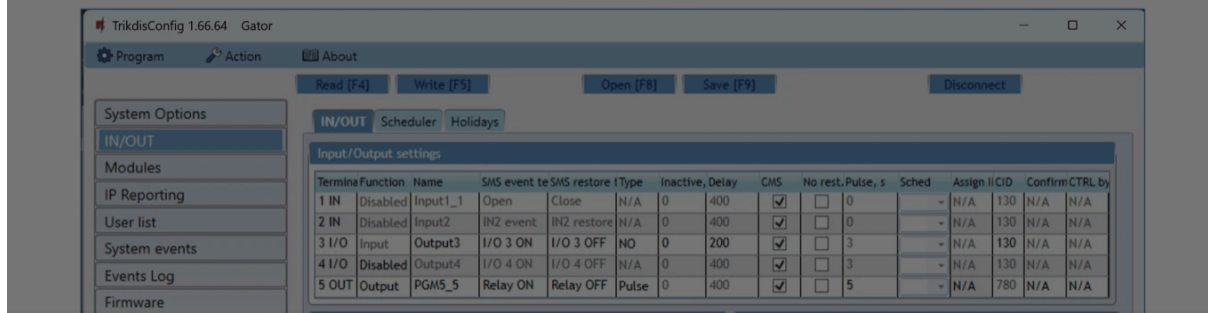
### Cookie consent

We use cookies to measure the effectiveness of our documentation and whether users find what they're searching for. With your consent, you're helping us to make our documentation better.

Google Analytics



In the TrikdisConfig program, it should be noted that one RFID reader and the "Exit" button will be used. When by pressing the "Exit" button, the 5OUT output of the controller will be activated for the set pulse duration. When the "Exit" button is not connected to the controller, then it is not necessary to mark the field "IO3 as exit button".

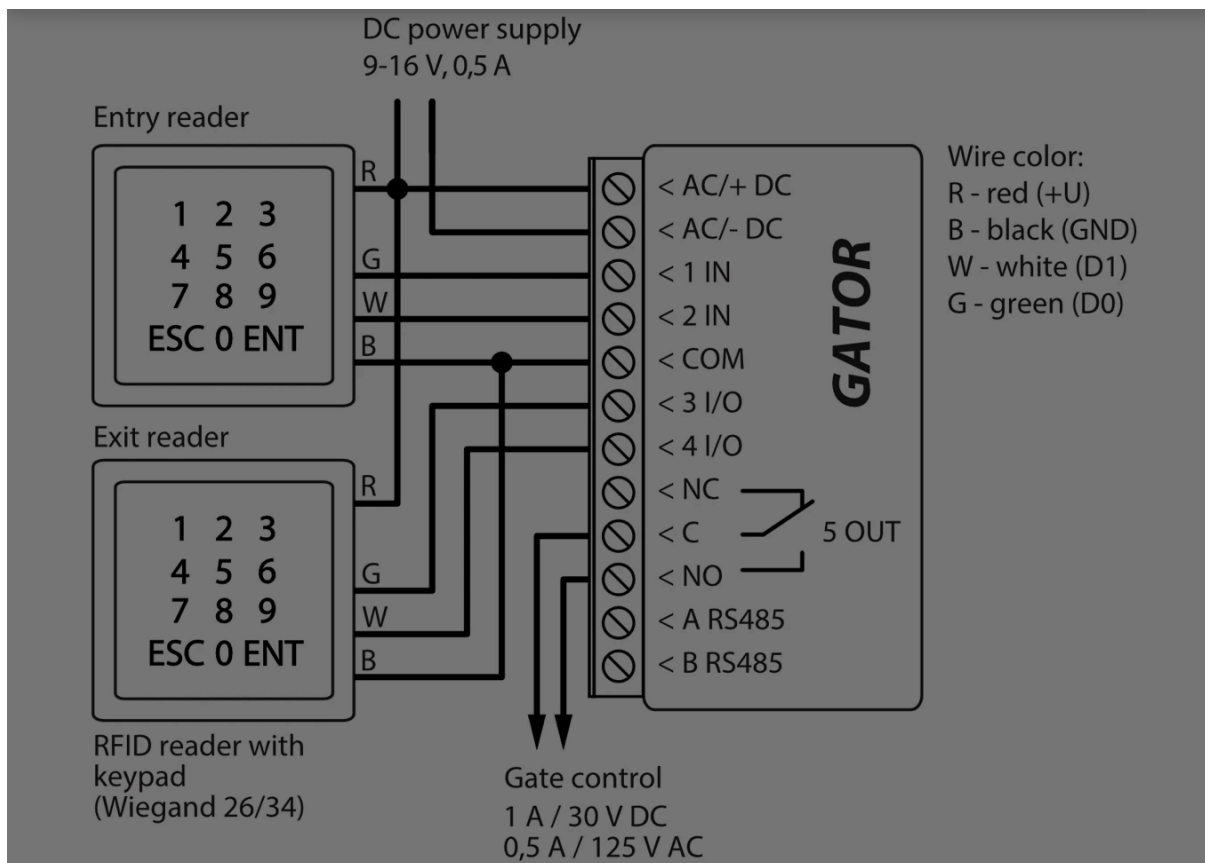


### Cookie consent

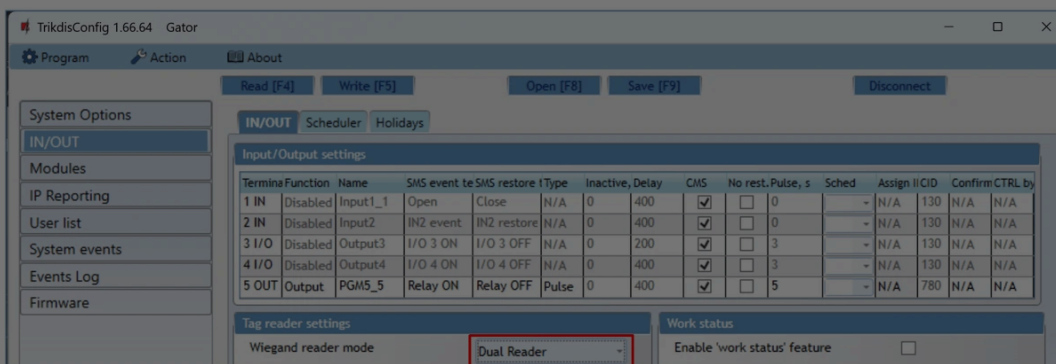
We use cookies to measure the effectiveness of our documentation and whether users find what they're searching for. With your consent, you're helping us to make our documentation better.

- Google Analytics





When connecting two RFID readers to the controller, it should be noted in the TrikdirConfig program that two RFID readers will be used.

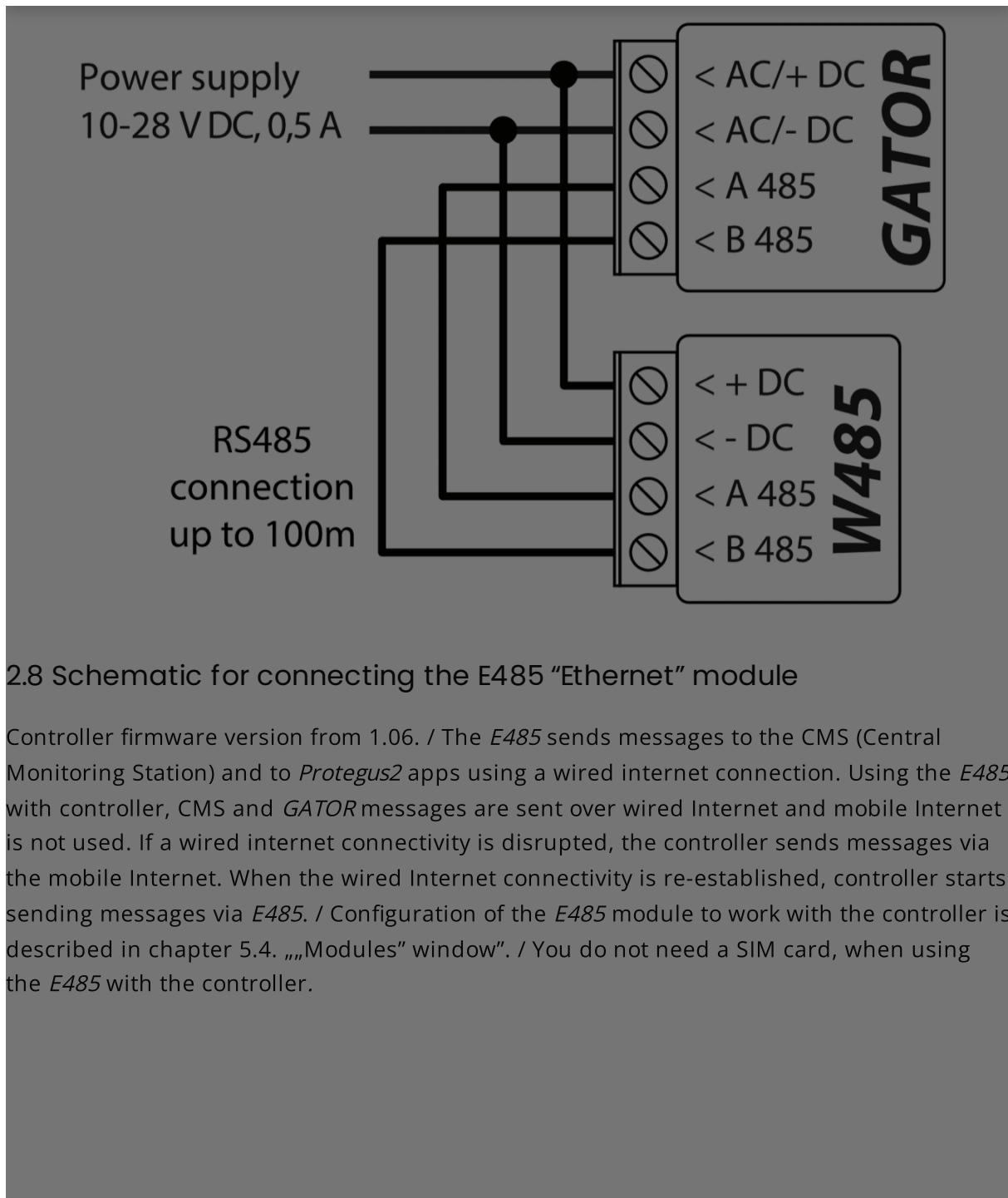


### 9.7 Schematic for connecting the W495 WiFi module

#### Cookie consent

We use cookies to measure the effectiveness of our documentation and whether users find what they're searching for. With your consent, you're helping us to make our documentation better.

- Google Analytics



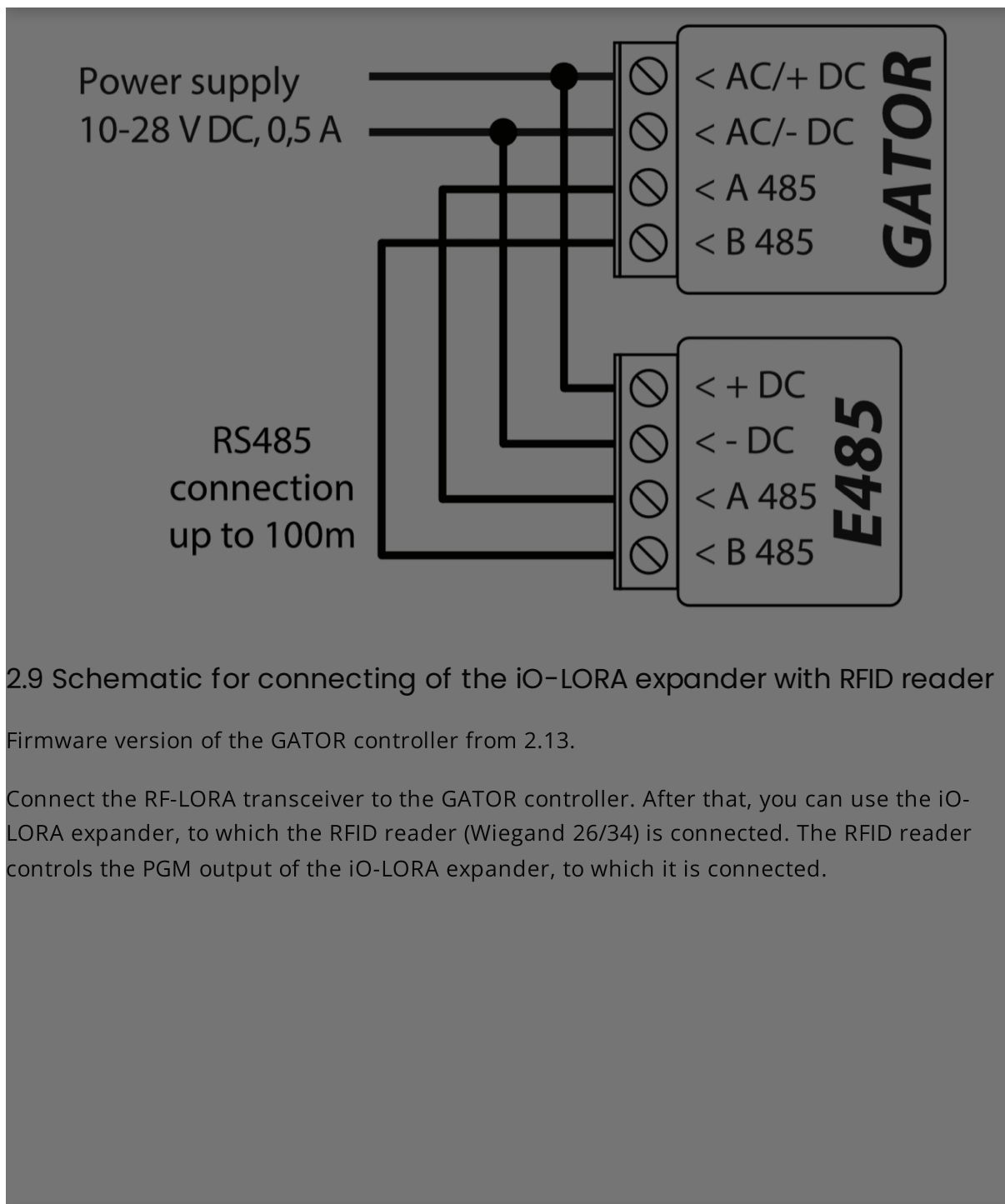
## 2.8 Schematic for connecting the E485 "Ethernet" module

Controller firmware version from 1.06. / The *E485* sends messages to the CMS (Central Monitoring Station) and to *Protegeus2* apps using a wired internet connection. Using the *E485* with controller, CMS and *GATOR* messages are sent over wired Internet and mobile Internet is not used. If a wired internet connectivity is disrupted, the controller sends messages via the mobile Internet. When the wired Internet connectivity is re-established, controller starts sending messages via *E485*. / Configuration of the *E485* module to work with the controller is described in chapter 5.4. „„Modules" window". / You do not need a SIM card, when using the *E485* with the controller.

### Cookie consent

We use cookies to measure the effectiveness of our documentation and whether users find what they're searching for. With your consent, you're helping us to make our documentation better.

Google Analytics



## 2.9 Schematic for connecting of the iO-LORA expander with RFID reader

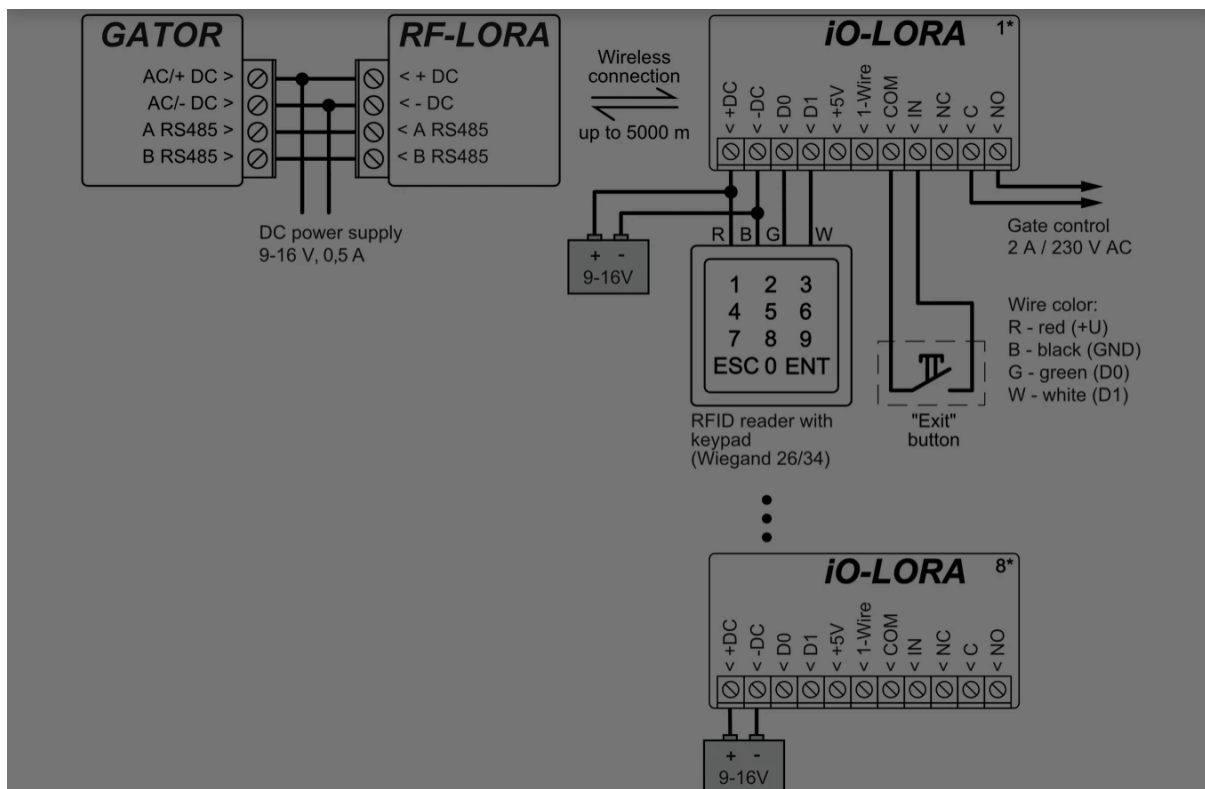
Firmware version of the GATOR controller from 2.13.

Connect the RF-LORA transceiver to the GATOR controller. After that, you can use the iO-LORA expander, to which the RFID reader (Wiegand 26/34) is connected. The RFID reader controls the PGM output of the iO-LORA expander, to which it is connected.

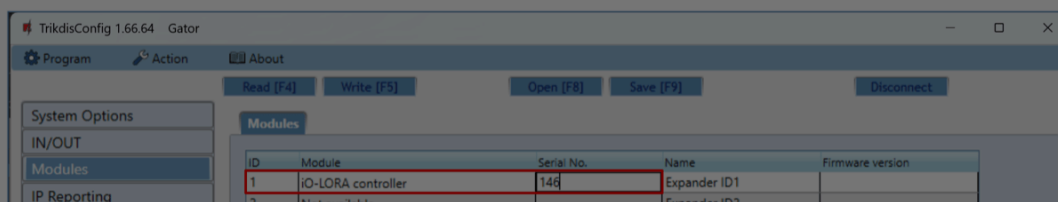
### Cookie consent

We use cookies to measure the effectiveness of our documentation and whether users find what they're searching for. With your consent, you're helping us to make our documentation better.

Google Analytics



Launch TrikdisConfig. Connect GATOR via USB Mini-B cable to the computer or remotely. Press the **Read [F4]** button and the TrikdisConfig program will display the current controller settings. If requested, enter the Administrator or Installer 6-digit code in the pop-up window. Select **"iO-LORA controller"** from the **"Modules"** list. In the **"Serial No."** field, enter the serial number of the device.



In the **"IN/OUT"** list, the **"EXIT button"** must be specified for the **"6 IN"** input. When the **"Exit"** button is pressed, the iO-LORA **"7 OUT"** output is activated for the set pulse duration.

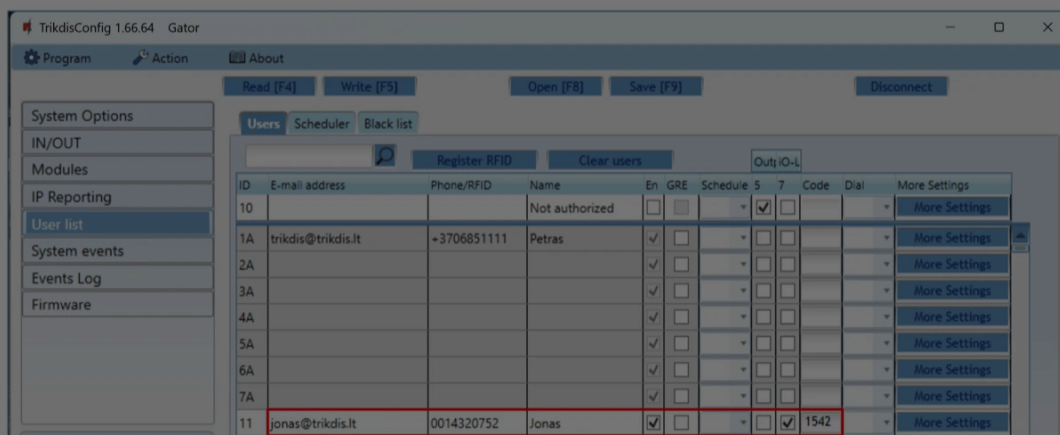
### Cookie consent

We use cookies to measure the effectiveness of our documentation and whether users find what they're searching for. With your consent, you're helping us to make our documentation better.

Google Analytics



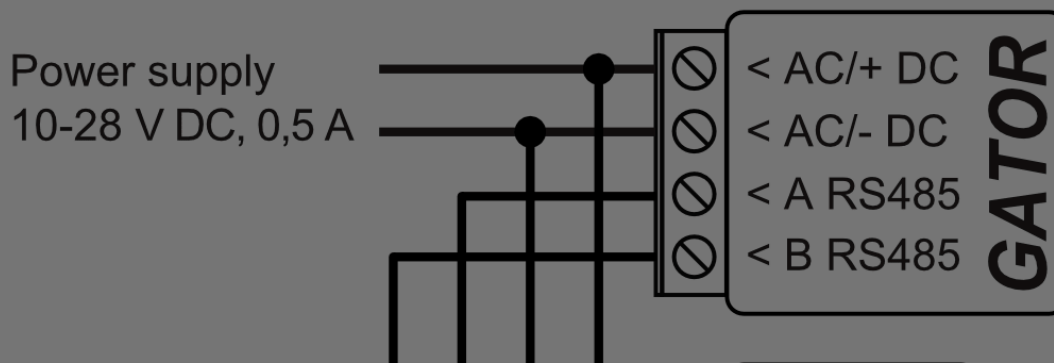
In the "Users" list, specify the number of the RFID card, the user's name, enable the permission to control the PGM output, specify the PGM output (which will be controlled by the user), the code. After completing the settings, click **Write [F5]**. Wait until the process of updating the controller settings is finished. Click "**Disconnect**" and disconnect the USB cable.



Activate PGM output with RFID card/code. Press the "**Exit**" button (the PGM output must activate for the set pulse duration).

## 2.10 Schematic for connecting of the iO8, iO8-LORA expander

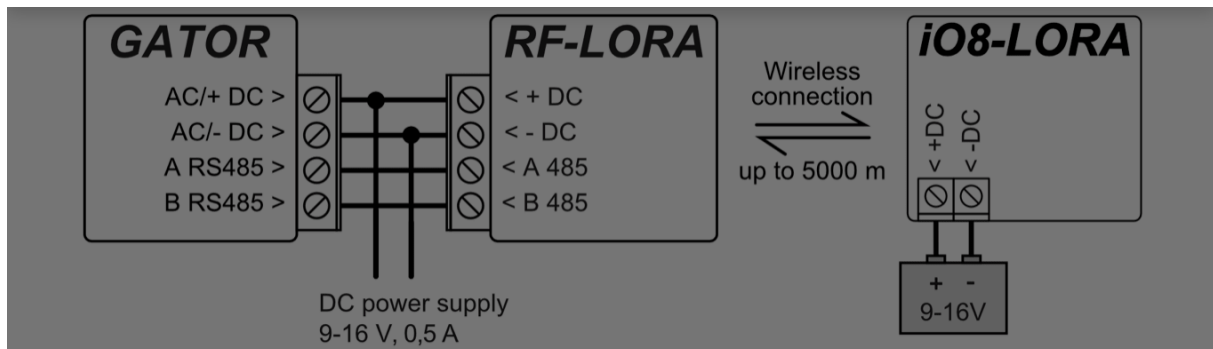
The *GATOR* controller can be connected to an *iO8* or *iO8-LORA* expander to increase the number of inputs (IN) and outputs (OUT). One *iO8* or *iO8-LORA* expansion module can be connected to the controller. / *iO8* expander connection diagram.



### Cookie consent

We use cookies to measure the effectiveness of our documentation and whether users find what they're searching for. With your consent, you're helping us to make our documentation better.

Google Analytics



### 3. Quick set up of the controller

#### NOTE

The controller comes factory pre-configured to work. A call from any phone to controller's SIM card number will turn on the 5 OUT relay output for 3 (three) seconds. The controller can be installed without any additional configuration if such operation mode is acceptable.

1. A nano-SIM card must be inserted into the controller. Turn off PIN code requests for the card before inserting it into the controller.
2. Connect a power source to the controller (see 2 "Wiring schematics for the Cellular gate controller").
3. Turn on the power for the controller. This should trigger the following controller LED indications:
  - The "POWER" indicator should blink green;
  - The "NETWORK" indicator should be green solid and blink yellow.

The default settings allow control by anyone who calls the phone number of the SIM card inserted into the controller.

#### Cookie consent

We use cookies to measure the effectiveness of our documentation and whether users find what they're searching for. With your consent, you're helping us to make our documentation better.

- Google Analytics



#### NOTE

If you wish to alter the default settings or turn on other functions of the controller, refer to chapter 5 „Setting of parameters using TrikdisConfig software“.

## 4. Remote control

### 4.1 Control with phone call

#### NOTE

The first one to call (or send an SMS to) the controller will become the system administrator and will be the only one who can administer and control the controller with SMS commands.

Call the number of the SIM card inserted into the controller. The controller automatically rejects the call and turns on the *5 OUT relay output* for *3 (three) seconds*. Default settings allow anyone who calls the number of the SIM card inserted into the controller to control.

### 4.2 Control with phone keyboard

Controller answers and allows to control the outputs with a phone call the user is allowed to control several outputs OUT:

1. Call the controller's SIM card number. The controller will accept the call.
2. Using the phone keyboard, dial the control command (command examples can be found in the table **DTMF control commands**).

#### Cookie consent

We use cookies to measure the effectiveness of our documentation and whether users find what they're searching for. With your consent, you're helping us to make our documentation better.

Google Analytics



#### 4.2.1 DTMF control commands (does not work with GV17\_2E70, GV17\_2S70 modules)

DTMF code	Function	Description
OUTPUT*STATE#	Output control	Output control command (turn on/turn off; turn on/turn off for pulse time). OUTPUT - number of the controlled output. STATE - control command: 0 - turn off output; 1 - turn on output; 2 - turn off output for pulse time; 3 - turn on output for pulse time; (output pulse time can be set using the TrikdisConfig program, in the Input/Output settings table) # - control command end symbol. E.g. (turn on output 5): 5 1# E.g. (turn on input 4 for pulse time): 4 3#
#	Command end symbol	If you made a mistake writing a command, dial # and enter the control command again.

#### 4.3 Control using *Protegeus2* Cloud

With Protegeus2 cloud users will be able to control controller remotely. They will also be able to see the system state and receive all system event messages.

1. Download and launch the Protegeus2 app or use the browser version of Protegeus2 at [www.protegeus.app](http://www.protegeus.app).



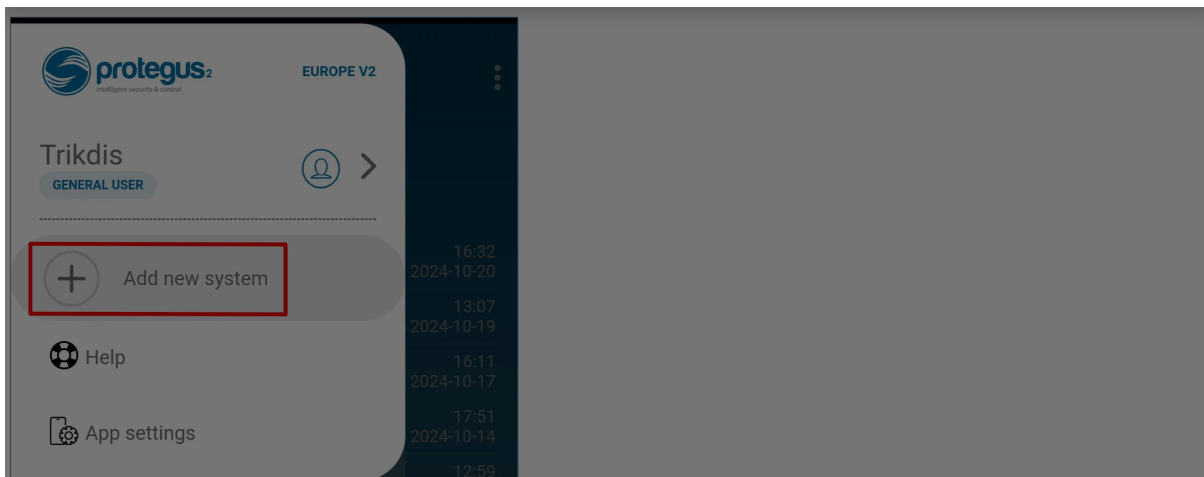
2. Log in with your user name and password or register and create a new account.

#### IMPORTANT

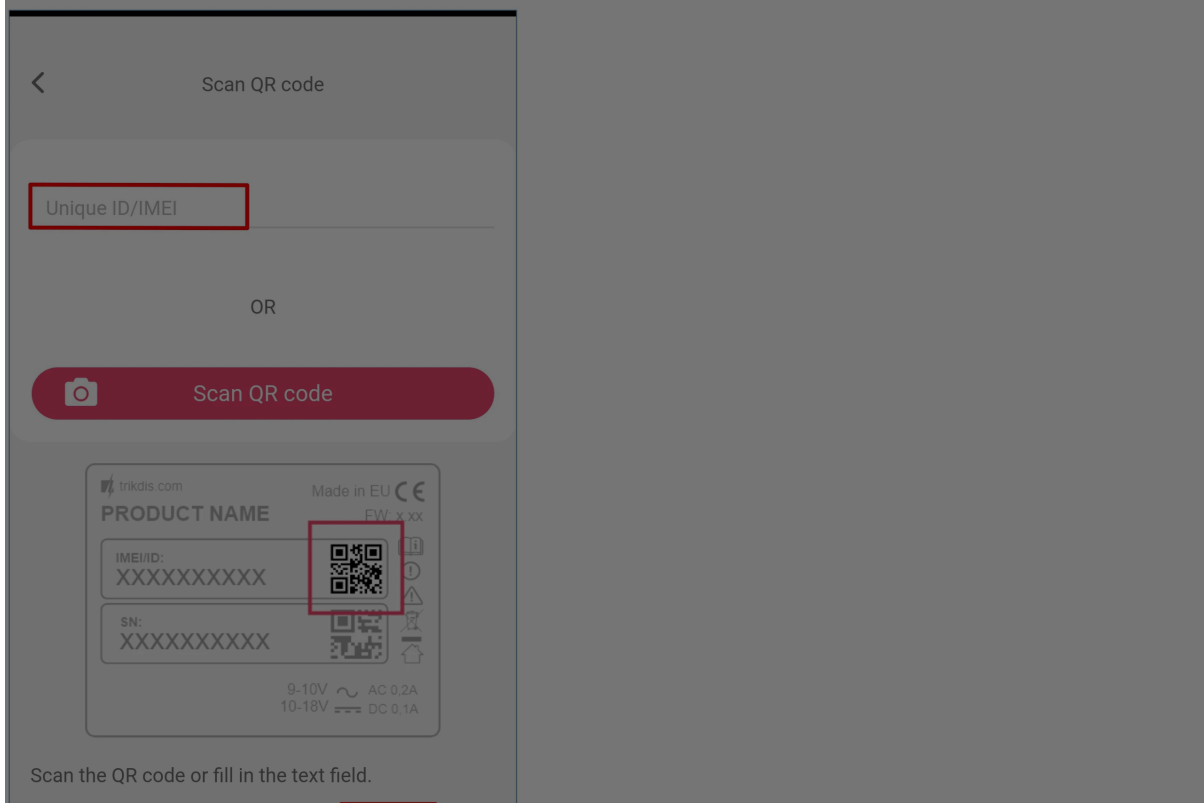
#### Cookie consent

We use cookies to measure the effectiveness of our documentation and whether users find what they're searching for. With your consent, you're helping us to make our documentation better.

- Google Analytics



4. Enter the controller "Unique ID (IMEI)" number found on the product or on the packaging sticker. Press "Next".



## Cookie consent

We use cookies to measure the effectiveness of our documentation and whether users find what they're searching for. With your consent, you're helping us to make our documentation better.

Google Analytics



Add new system

Name  
Gator

Background

Time zone  
Europe/Kaliningrad

Cancel Next

6. Press „Skip“.

System added successfully!

You can now change the default names, or skip this step and change the names later.

Personalize

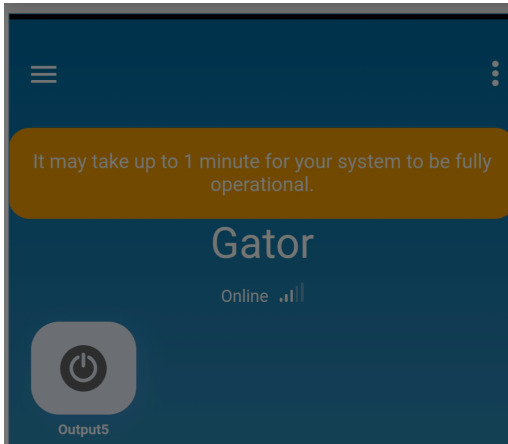
Skip

7. Wait 1 minute.

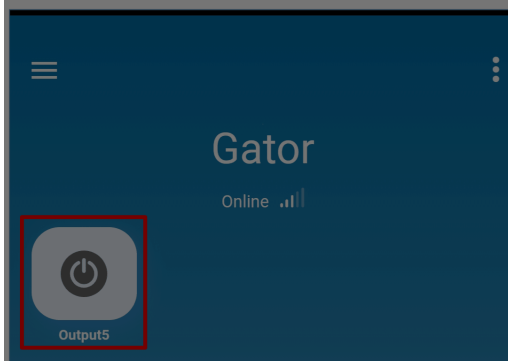
### Cookie consent

We use cookies to measure the effectiveness of our documentation and whether users find what they're searching for. With your consent, you're helping us to make our documentation better.

Google Analytics



8. Activate the PGM output by clicking on the "Output5" icon.



#### 4.4 Adding a Widget on your phone

The gate control Widget can be placed on your phone's home screen. The controller must be registered to Protegus2 cloud. Log in to Protegus2 app on your phone. Close the Protegus2 window.

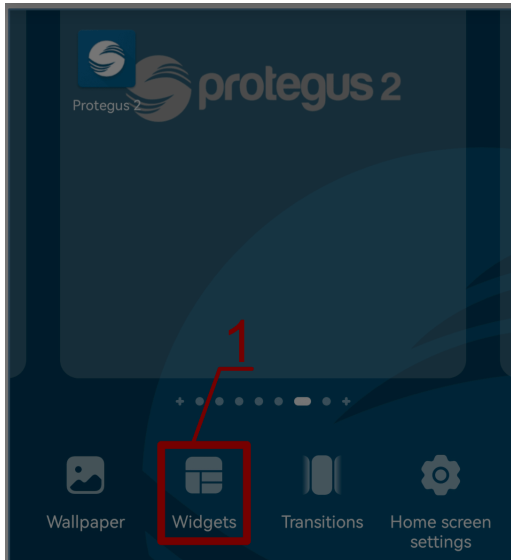
Touch the screen with your finger and hold. A settings bar will appear.

1. Press "**Widgets**".

#### Cookie consent

We use cookies to measure the effectiveness of our documentation and whether users find what they're searching for. With your consent, you're helping us to make our documentation better.

Google Analytics



Find Protegus2 in the settings bar.

2. Select „Protegus2“.

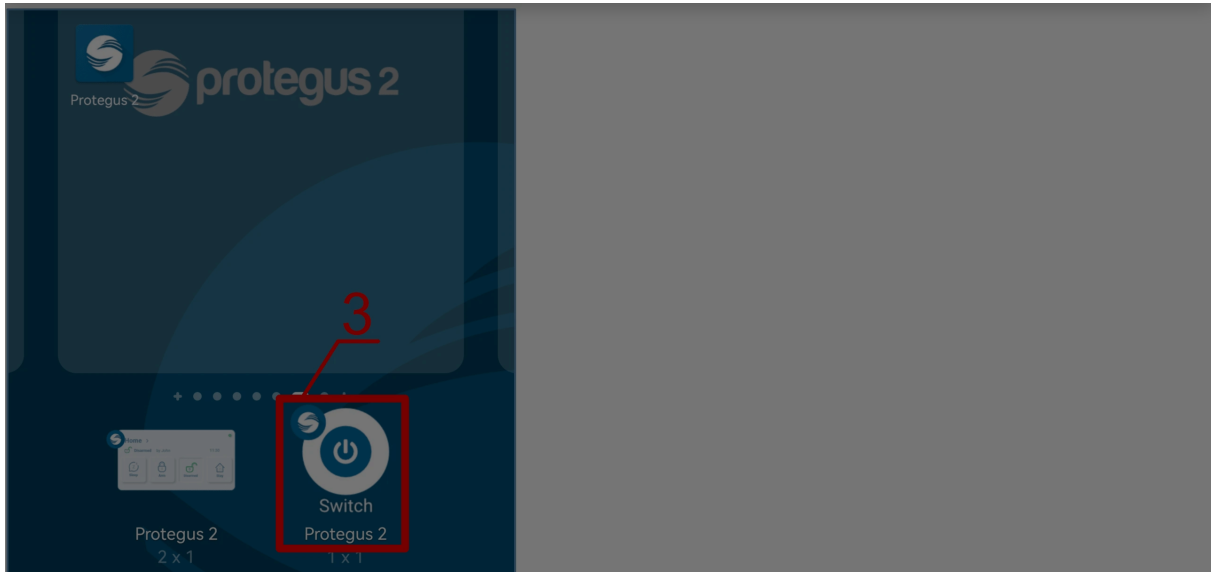


3. Click on „Switch Protegus2“.

## Cookie consent

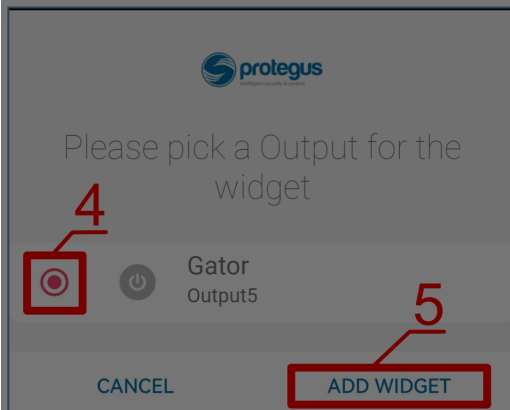
We use cookies to measure the effectiveness of our documentation and whether users find what they're searching for. With your consent, you're helping us to make our documentation better.

Google Analytics



4. Select “Gator Output5” controller output.

5. Click on “ADD WIDGET”.

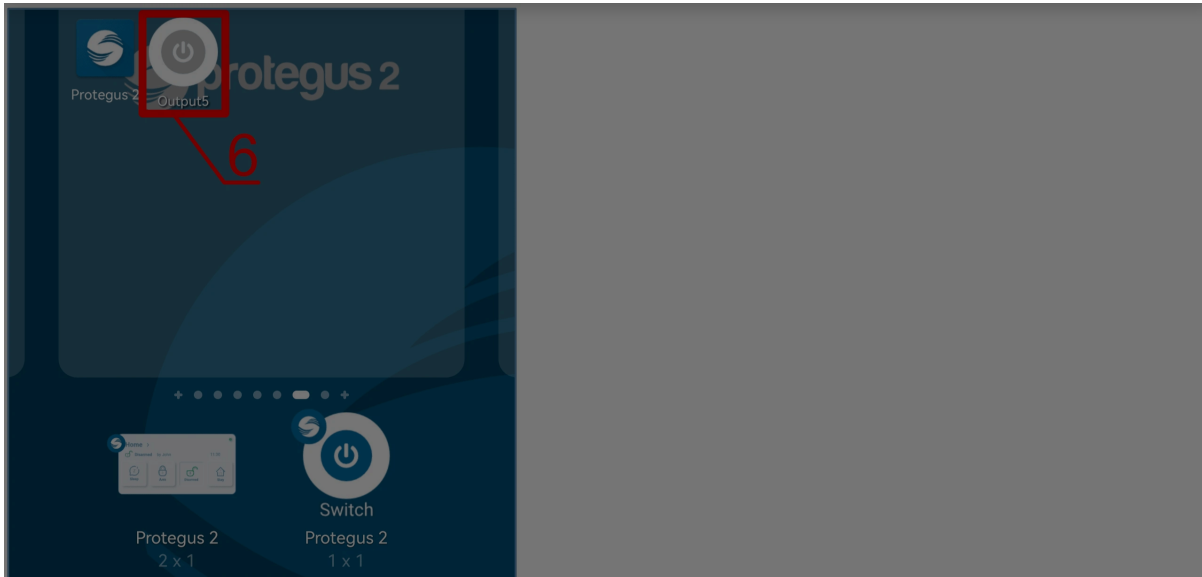


3. An icon will appear on the phone’s screen.

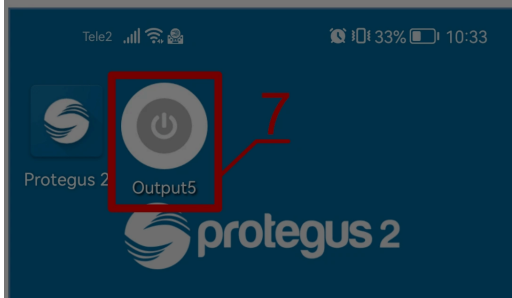
### Cookie consent

We use cookies to measure the effectiveness of our documentation and whether users find what they're searching for. With your consent, you're helping us to make our documentation better.

Google Analytics



4. Return to the home screen. Press the icon.



A circle that shows when the PGM is turned on will appear on the screen.

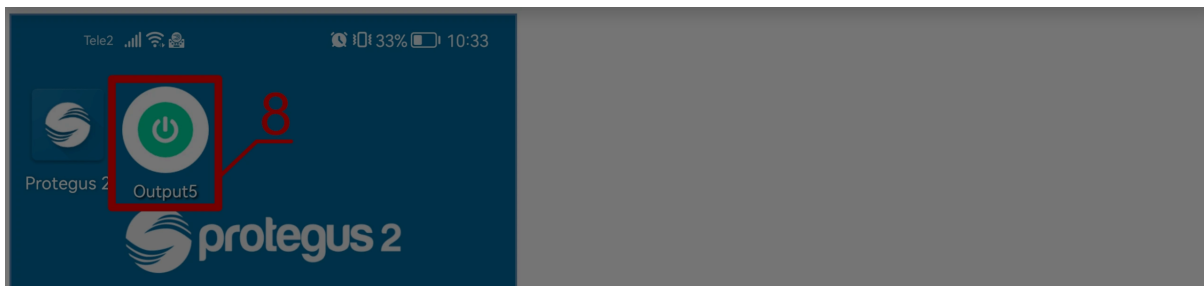


**Cookie consent**

We use cookies to measure the effectiveness of our documentation and whether users find what they're searching for. With your consent, you're helping us to make our documentation better.

Google Analytics





## 4.5 Adding users on your phone

**Launch Protegus2 application on your phone. Log in with your user name and password. 1. Press „Settings“.**

Press „System configuration“.

Press „Users“.

Press „Add new user“.

Enter the user's e-mail address. Enter the user's name. Enter the user's phone number. Select the PGM output that will be controlled by the user. Press „Add user“.

A new user appears in the user list. Click „Back“ to return to the main window.

## 4.6 Control with SMS messages

Control the relay output OUT5 with these SMS commands:

**OUTPUT5 xxxxxx ON**

**OUTPUT5 xxxxxx OFF**

**OUTPUT5 xxxxxx PULSE=002**

xxxxxx

**6-symbol administrator password. (default code - 123456).**

ON

Turn on output.

OFF

Turn off output.

### Cookie consent

We use cookies to measure the effectiveness of our documentation and whether users find what they're searching for. With your consent, you're helping us to make our documentation better.

Google Analytics



Command	Data	Description
OUTPUTx	ON	Turn on output. "x" – output number. E.g.: OUTPUT5 123456 ON
OUTPUTx	OFF	Turn off output. "x" – output number. E.g.: OUTPUT5 123456 OFF
OUTPUTx	PULSE=ttt	Turn on output for a period of time. "ttt" is pulse time in seconds, from 1 to 999. E.g.: OUTPUT5 123456 PULSE=002

## 4.7 Configuration with SMS messages

### 1. Changing the administrator's password

For safety reasons, change the default administrator password. Send an SMS message of this format:

#### 4.7.1 PSW 123456 xxxxxx

123456	Default administrator password.
xxxxxx	New 6-symbol administrator password.

### 1. Allow only authorized users to control the system

You can allow only specific people to control the system. From an administrator's phone, send SMS messages with the users' phone numbers and names:

#### 4.7.2 SETU xxxxxx +PHONENO# NAME# EMAIL

xxxxxx	6-symbol administrator password.
PHONENO	User's phone number.
NAME	User's name.
EMAIL	User's e-mail.

Once the first number is added to the controller's user phone list, the controller will react only to phone calls from the numbers on the list. The controller will ignore calls from other

## Cookie consent

We use cookies to measure the effectiveness of our documentation and whether users find what they're searching for. With your consent, you're helping us to make our documentation better.

Google Analytics



**4.7.3 SETA xxxxxx No x=+PHONENO#NAME#EMAIL**

xxxxxx	<b>6-symbol administrator password.</b>
Nox	x – administrator’s number in the list. (If you write <b>1</b> , you will transfer your administrator rights to another user.)
PHONENO	administrator’s phone number.
NAME	administrator’s name or e-mail.
EMAIL	administrator’s e-mail.

SMS configuration command list

**Cookie consent**

We use cookies to measure the effectiveness of our documentation and whether users find what they're searching for. With your consent, you're helping us to make our documentation better.

Google Analytics





Command	Data	Description
INFO		Request information about the controller. The response will include: controller type, IMEI number, Cellular signal strength, power voltage magnitude, software version, serial number, date and time. E.g.: INFO 123456
ASKI		Input status inquiry. E.g.: ASKI 123456
ASKO		Output status inquiry. E.g.: ASKO 123456
SETA	NoX=phoneno#name#email	Add administrator to list (administrator number from 1A to 7A). Adds the phone number, name and e-mail to the specified line. The number must be separated from the name with a hash (#). The number must start with "+" and the international code. / E.g.: SETA 123456 No3=+37061234567#John#john_M@trikdis.com
SETA	NoX=DEL	Deletes phone number and name from the specified line. / E.g.: SETA 123456 No2=DEL
SETU	phoneno#name#email	Add new user (user number from 11 to 1010). Adds the phone number, name and e-mail to the list. The number must be separated from the name with a hash (#). The number must start with "+" and the international code. / E.g.: SETU 123456 +37061234567#Peter#peter@trikdis.com
DELU	phoneno	Delete user with specified phone number. E.g.: DELU 123456 +37061234567
DELU	name	Delete user with specified name. E.g.: DELU 123456 Peter
SETB	Email/phoneNo	Add entry into black-list (e-mail; phone No.). / E.g.: SETB 123456 john_S@trikdis.com / E.g.: SETB

### Cookie consent

We use cookies to measure the effectiveness of our documentation and whether users find what they're searching for. With your consent, you're helping us to make our documentation better.

Google Analytics



Command	Data	Description
PSW	New password	Change password. E.g.: PSW 123456 654123
TXTA	Object name	Set object name. E.g.: TXTA 123456 House
TXTE	N1= / ..... / N5=	Set SMS text about input or output activation. N1...N5 is the number of the contact on the terminal block. / E.g.: TXTE 123456 N1=Alarm in the living room
TXTR	N1= / ..... / N5=	Set SMS text about input or output recovery. N1...N5 is the number of the contact on the terminal block. / E.g.: TXTR 123456 N5=Relay turn off
SETD	IDx=yy	Set inactivity time for input "x". "yy" is inactivity time in minutes, from 0 to 2880. When the input is activated, the controller will send a notification and will not react to any further circuit disruptions during the set inactivity time. If 0 is entered, inactivity will be turn off. E.g.: SETD 123456 ID1=30
RESD	IDx	Resets inactivity time for input "x", if the countdown has started. / E.g.: RESD 123456 ID1
TIME	YYYY/MM/DD, / HH:mm:ss	Set date and time. / E.g.: TIME 123456 2025/05/09,10:03:00
RDR	PhoneNO#SMStext	Forwards the SMS text to the specified number. / E.g.: RDR 123456 +37061234567#Refill account by 10EUR
HELLO	ON	Enable the function of informing a new user by SMS message about his addition to the GATOR controller via the Protegus2 app or SMS message. / E.g.: HELLO 123456 ON
HELLO	OFF	Disable the function of informing a new user by SMS message about his addition to the GATOR controller via the

### Cookie consent

We use cookies to measure the effectiveness of our documentation and whether users find what they're searching for. With your consent, you're helping us to make our documentation better.

Google Analytics



Command	Data	Description
NATH	OFF	Disable the "Not authorized" mode. / E.g.: NATH 123456 OFF
UUSD	*UUSD code#	Sends UUSD code to mobile operator. Operator specified UUSD codes are for checking or refilling the SIM card's balance and for similar operations. / E.g.: UUSD 123456 *245#
CONNECT	Protequs=ON	Connect to Protequs cloud. E.g.: CONNECT 123456 PROTEGUS=ON
CONNECT	Protequs=OFF	Disconnect from Protequs cloud. E.g.: CONNECT 123456 PROTEGUS=OFF
CONNECT	APN=Internet	APN name. E.g.: CONNECT 123456 APN=INTERNET
CONNECT	USER=user	APN user. E.g.: CONNECT 123456 USER=User
CONNECT	PSW=password	APN password. E.g.: CONNECT 123456 PSW=password
CONNECT	Code=password	Change Protequs Cloud login password. / E.g.: CONNECT 123456 Code=123456

## 5. Setting parameters using *TrikdisConfig* software

With TrikdisConfig you can change the controller's settings (if default settings are not enough) according to the program window descriptions below.

1. Download the configuration software TrikdisConfig from [www.trikdis.com/lt/](http://www.trikdis.com/lt/) (enter "TrikdisConfig" in the search field) and install it.
2. Using a flat-head screwdriver, remove the controller's lid as shown below:



### Cookie consent

We use cookies to measure the effectiveness of our documentation and whether users find what they're searching for. With your consent, you're helping us to make our documentation better.

Google Analytics



- Click **Read [F4]** to see current controller parameters. If prompted, enter administrator's or installer's code in the pop-up window.

#### NOTE

The button **Read [F4]** will make the program read and show the settings currently saved on the device. / The button **Write [F5]** will save the settings made in the program to the device. / The button **Save [F9]** will save the settings into a configuration file. You can upload the saved settings to other devices later. This allows to quickly configure multiple devices with the same settings. / The button **Open [F8]** will allow to choose a configuration file and open saved settings. / If you want to revert to default settings, click on the "**Restore**" button at the bottom left of the window.

## 5.1 TrikdisConfig status bar

After connecting the controller to the TrikdisConfig software, the software will show information about the connected device in the status bar:

IMEI/Unique ID: 862261044865918	Status: reading done	Device: GV17_2200	SN: 000002	BL: 2.02	FW: 2.16	HW:	State	USB
Name	Description							
IMEI/Unique ID	The device's IMEI number							
State	Operational state							
Device	Device type (must show GV17_xxxx)							
SN	Device's serial number							
BL	Launcher version							
FW	Device's firmware version							
HW	Device's hardware version							
State	Type of connection with the software (with USB or remote)							

### Cookie consent

We use cookies to measure the effectiveness of our documentation and whether users find what they're searching for. With your consent, you're helping us to make our documentation better.

Google Analytics



## 5.2 "System Options" window

TrikiConfig 1.66.64 Gator

Program Action About

Read [F4] Write [F5] Open [F8] Save [F9] Disconnect

**System Options**

IN/OUT

Modules

IP Reporting

User list

System events

Events Log

Firmware

Remember password

Show passwords

Default settings

Restore

IMEI/Unique ID: 862261044865918

**General**

Object ID: 0000

Object name: GV17

Time set: GSM modem

SMS time synchronization:

Administrator Code: 123456

Text language: Baltic

Hang-up after: 0 s

Modem reboot: disabled 02:30 p 0 h

**Periodical Test**

Test Enable:

Test period: 1 day(s) 0 h

Start test at:  13:35

Test SMS text: Periodical test

To mobile application:

**SIM**

SIM card pin: 1234

APN: internet  Auto

Login:

Password:

Preferred operator:

**Time zone**

Time zone (hours):  +2 - 0 min

Daylight saving time:

**SMS ack texts**

Answer	SMS text
Command done	Command done
Wrong password	Wrong password
Wrong data	Wrong data
Wrong command	Wrong command
Greeting text	You have been added to gate controller

Force greeting message:

Status: Ready Device: GV17\_2200 SN: 000002 BL: 2.02 FW: 2.16 HW: State USB

### Settings group "General"

- **Object ID** – enter account number (4 symbol hexadecimal number, 0-9, A-F), provided by the central monitoring station (**Do not use FFFE, FFFF Object ID**).
- **Object name** – every event will be sent with the object name.
- **Time set** – choose a source for setting the time.
- **SMS time synchronization** - check the box and enter the SIM card phone number of the controller. The phone number must be with an international code.
- **Administrator Code** – with this code it is possible to change all of the parameters of the controller.
- **Text language** – SMS messages are sent with the symbols of the chosen language.

### Cookie consent

We use cookies to measure the effectiveness of our documentation and whether users find what they're searching for. With your consent, you're helping us to make our documentation better.

- Google Analytics



- **Test SMS text** – enter the test SMS message text.
- **To mobile application** – if the box is ticked, the test message will be sent to Protegus2 apps.

### Settings group “SIM”

- **SIM card PIN** – enter the PIN code of the SIM card.
- **APN** – enter APN name. **Auto** - if the box is checked, the SIM card will automatically search for an APN based on the internal list. The internal list contains APNs of several global mobile operators and APNs of several countries for domestic mobile operators. If the mobile network operator is not found, the APN value entered in the box will be used.
- **Login** – if required, enter user name.
- **Password** – if required, enter password.
- **Preferred operator** - if a code is entered in the field, the controller will connect only to the selected mobile network operator. The mobile network operator code consists of MCC + MNC codes. This setting is relevant for global SIM cards.

### Settings group „Time zone”

In the GATOR, you can set the current time of your country. To do this, you must specify the “**Time zone**” of your country and indicate if your country has a “**Daylight saving time**” conversion.

- **Time zone (hours)** – check the box and enter the time zone of your country.
- **Daylighting saving time** - check the box if your country is going to daylight saving time.

### Settings group „SMS ack texts”

The text of SMS messages that the user will receive after sending SMS commands.

- **Force greeting message** - check the box to send an SMS message to the new user, who was added by SMS or Protegus2 app, to the gate controller. (By SMS (HELLO 123456 OFF) this function can be turned off)

### Cookie consent

We use cookies to measure the effectiveness of our documentation and whether users find what they're searching for. With your consent, you're helping us to make our documentation better.

- Google Analytics



The screenshot shows the 'Input/Output settings' configuration window. It features a table with the following data:

Terminal	Function	Name	SMS event text	SMS restore text	Type	Inactive, Delay	CMS	No rest, Pulse, s	Sched	Assign I/CID	Confirm CTRL by
1 IN	Input	Input1_1	IN1 event	IN1 restore	NO	0 400	<input checked="" type="checkbox"/>	<input type="checkbox"/> 0	-	N/A 130	N/A N/A
2 IN	Disabled	Input2	IN2 event	IN2 restore	N/A	0 400	<input checked="" type="checkbox"/>	<input type="checkbox"/> 0	-	N/A 130	N/A N/A
3 I/O	Disabled	Output3	I/O 3 ON	I/O 3 OFF	N/A	0 200	<input checked="" type="checkbox"/>	<input type="checkbox"/> 3	-	N/A 130	N/A N/A
4 I/O	Disabled	Output4	I/O 4 ON	I/O 4 OFF	N/A	0 400	<input checked="" type="checkbox"/>	<input type="checkbox"/> 3	-	N/A 130	N/A N/A
5 OUT	Output	PGM5_5	Relay ON	Relay OFF	Pulse	0 400	<input checked="" type="checkbox"/>	<input type="checkbox"/> 5	-	N/A 780	N/A N/A

Below the table, there are sections for 'Tag reader settings' (Wiegand reader mode: Disabled, IO3 as exit button: , Low voltage reader: , Disable reader filter: ) and 'Work status' (Enable 'work status' feature: , Entry/Exit event with output: , Auto end of work: at specific time, End work at/after: 16:22).

### Settings group „Input/Output settings“

- **Terminal** – controller’s input and output terminal numbers.
- **Function** – terminal type (input, output, turned off).
- **Name** - enter the name of the IN input or OUT output.
- **SMS event text** – enter SMS message event text.
- **SMS restore text** – enter SMS message text for when terminal is restored.
- **Type** – specify input type (NC, NO, EOL=10kΩ).
- **Inactive** –input will be inactive for specified time after first activation. Enter 0 if you want to turn this function off.
- **Delay** – input (zone) reaction time, ms.
- **CMS** – if box is ticked, the message will be sent to CMS (Central Monitoring Station) and to Protegus2 app.
- **No rest.** – do not send restore event.
- **Pulse** – time for which the output is turned on, when output is set as “Pulse” type.
- **Sched** – assign a schedule number for controlling the output.

### Cookie consent

We use cookies to measure the effectiveness of our documentation and whether users find what they're searching for. With your consent, you're helping us to make our documentation better.

Google Analytics



- **Wiegand reader mode** - specify the number of "Wiegand" RFID readers connected to the controller.
- **IO3 as exit button (5 OUT)** – mark the box if the "Exit" button is connected to the IO3 input of the controller, and activation of the IO3 input will trigger the output (5OUT) for the duration of the set pulse.
- **Low voltage reader** – check the box and the low voltage reader mode will be enabled.
- **Disable reader filter** - check the box and the internal device filter for the reader that sends short pulses will be disabled.

### Settings group „Work status“

- **Enable “work status” feature** - by checking the box, enable the indication of the “Work status” in the Protegus2 app.
- **Entry/Exit event with output** - ticking the field will send Entry/Exit event messages, when output is controlled remotely.
- **Auto end of work** - you can specify when the time tracking will be completed.
- **End work at/after** – specify the end of the working time tracking. Depending on the previous setting, either a specific time of day or a time interval is entered.

### “Scheduler” tab

Outputs can be controlled automatically according to a set schedule.

ID	Name	Enab	Lock	MAH	Output	Holiday	Hoi	Start time							End time															
								Time	Mon	Tue	Wed	Thu	Fri	Sat	Sun	Time	Mon	Tue	Wed	Thu	Fri	Sat	Sun							
1	Schedulr	<input type="checkbox"/>	<input type="checkbox"/>	<input type="checkbox"/>	Level	Only t	<input type="checkbox"/>	09:25	<input type="checkbox"/>	<input type="checkbox"/>	<input type="checkbox"/>	<input type="checkbox"/>	<input type="checkbox"/>	<input type="checkbox"/>	<input type="checkbox"/>	<input type="checkbox"/>	<input type="checkbox"/>	09:28	<input type="checkbox"/>	<input type="checkbox"/>	<input type="checkbox"/>	<input type="checkbox"/>	<input type="checkbox"/>	<input type="checkbox"/>	<input type="checkbox"/>	<input type="checkbox"/>	<input type="checkbox"/>	<input type="checkbox"/>	<input type="checkbox"/>	<input type="checkbox"/>
2	Schedulr	<input type="checkbox"/>	<input type="checkbox"/>	<input type="checkbox"/>	Level	Disabl	<input type="checkbox"/>	00:00	<input type="checkbox"/>	<input type="checkbox"/>	<input type="checkbox"/>	<input type="checkbox"/>	<input type="checkbox"/>	<input type="checkbox"/>	<input type="checkbox"/>	<input type="checkbox"/>	<input type="checkbox"/>	00:00	<input type="checkbox"/>	<input type="checkbox"/>	<input type="checkbox"/>	<input type="checkbox"/>	<input type="checkbox"/>	<input type="checkbox"/>	<input type="checkbox"/>	<input type="checkbox"/>	<input type="checkbox"/>	<input type="checkbox"/>	<input type="checkbox"/>	
3	Schedulr	<input type="checkbox"/>	<input type="checkbox"/>	<input type="checkbox"/>	Level	Disabl	<input type="checkbox"/>	00:00	<input type="checkbox"/>	<input type="checkbox"/>	<input type="checkbox"/>	<input type="checkbox"/>	<input type="checkbox"/>	<input type="checkbox"/>	<input type="checkbox"/>	<input type="checkbox"/>	<input type="checkbox"/>	00:00	<input type="checkbox"/>	<input type="checkbox"/>	<input type="checkbox"/>	<input type="checkbox"/>	<input type="checkbox"/>	<input type="checkbox"/>	<input type="checkbox"/>	<input type="checkbox"/>	<input type="checkbox"/>	<input type="checkbox"/>	<input type="checkbox"/>	
4	Schedulr	<input type="checkbox"/>	<input type="checkbox"/>	<input type="checkbox"/>	Level	Disabl	<input type="checkbox"/>	00:00	<input type="checkbox"/>	<input type="checkbox"/>	<input type="checkbox"/>	<input type="checkbox"/>	<input type="checkbox"/>	<input type="checkbox"/>	<input type="checkbox"/>	<input type="checkbox"/>	<input type="checkbox"/>	00:00	<input type="checkbox"/>	<input type="checkbox"/>	<input type="checkbox"/>	<input type="checkbox"/>	<input type="checkbox"/>	<input type="checkbox"/>	<input type="checkbox"/>	<input type="checkbox"/>	<input type="checkbox"/>	<input type="checkbox"/>	<input type="checkbox"/>	
5	Schedulr	<input type="checkbox"/>	<input type="checkbox"/>	<input type="checkbox"/>	Pulse	Disabl	<input type="checkbox"/>	00:00	<input type="checkbox"/>	<input type="checkbox"/>	<input type="checkbox"/>	<input type="checkbox"/>	<input type="checkbox"/>	<input type="checkbox"/>	<input type="checkbox"/>	<input type="checkbox"/>	<input type="checkbox"/>	00:00	<input type="checkbox"/>	<input type="checkbox"/>	<input type="checkbox"/>	<input type="checkbox"/>	<input type="checkbox"/>	<input type="checkbox"/>	<input type="checkbox"/>	<input type="checkbox"/>	<input type="checkbox"/>	<input type="checkbox"/>	<input type="checkbox"/>	

### Cookie consent

We use cookies to measure the effectiveness of our documentation and whether users find what they're searching for. With your consent, you're helping us to make our documentation better.

- Google Analytics



- **Output mode** – specify the mode of operation of the PGM output: **“Level”** - the output will be activated for the specified time period; **“Pulse”** - the output will be activated at the start and end of the schedule for the set pulse duration.
- **Holiday mode** - specify the mode of how the time schedule should work when the holidays begin.
- **Hol** - check the box to use holiday time when holidays occur.
- **Start time** – specify the time and days of the week from when the output will be turned on.
- **End time** – specify the time and days of the week until when the output will be turned on.

If the PGM output mode is set to **“Level”** and only **“End time”** is specified in the **“Scheduler”** table, then the PGM output will be disabled at the specified time, if it was enabled. An output control schedule must be assigned to an PGM output.

### “Holidays” tab

Enter the calendar holidays during which it will be possible to set the additional activation of the PGM output provided in the Scheduler table.

ID	En	Start date	Stop date	Annual
1	<input checked="" type="checkbox"/>	12.06.2025	13.06.2025	<input type="checkbox"/>
2	<input type="checkbox"/>	01.04.2023	01.04.2023	<input type="checkbox"/>
3	<input type="checkbox"/>	01.04.2023	01.04.2023	<input type="checkbox"/>
4	<input type="checkbox"/>	01.04.2023	01.04.2023	<input type="checkbox"/>
5	<input type="checkbox"/>	01.04.2023	01.04.2023	<input type="checkbox"/>
6	<input type="checkbox"/>	01.04.2023	01.04.2023	<input type="checkbox"/>

Start time on holidays: 09:30

Stop time on holidays: 09:33

- **En.** – check the box to specify a specific holiday interval.
- **Start date** – specify the start date of the holidays.
- **Stop date** – specify the end date of the holidays.

### Cookie consent

We use cookies to measure the effectiveness of our documentation and whether users find what they're searching for. With your consent, you're helping us to make our documentation better.

Google Analytics

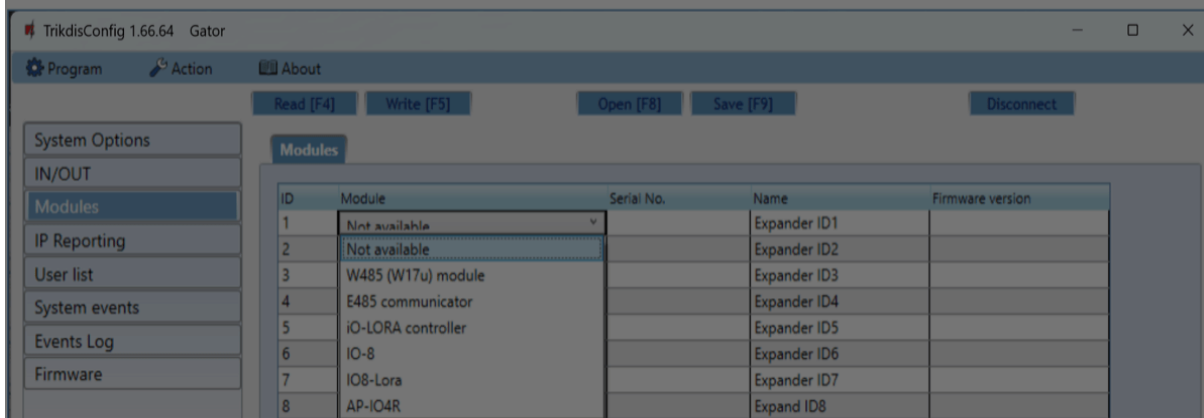


The following modules can be connected to the GATOR controller: iO-LORA, W485, **E485\***, iO8, iO8-LORA\*\*\*.

By connecting the RF-LORA transceiver, you can connect the iO8-LORA wireless expander (1 pc.) and iO-LORA wireless expanders (up to 8 pcs.) to the GATOR controller. RFID readers connected to the iO-LORA wireless expansion modules can control up to 8 more PGM outputs (GATOR controller firmware version from 2.13). One iO-LORA expander with an RFID reader controls only one PGM output.

Only one iO8 or iO8-LORA expander can be connected to the GATOR controller.

If there is wireless internet (WiFi) or wired internet at the controller installation site, the W485 WiFi module or the E485 „Ethernet“ module can be connected to the controller. The module will be able to transfer data to Protegus2 cloud and CMS (central monitoring station) via the Internet. Using a module (W485 or E485) with controller: 1) does not use mobile internet, it is also possible to disable controller GPRS data transmission; 2) You can use the controller without a SIM card (controlled by the Protegus2 apps).



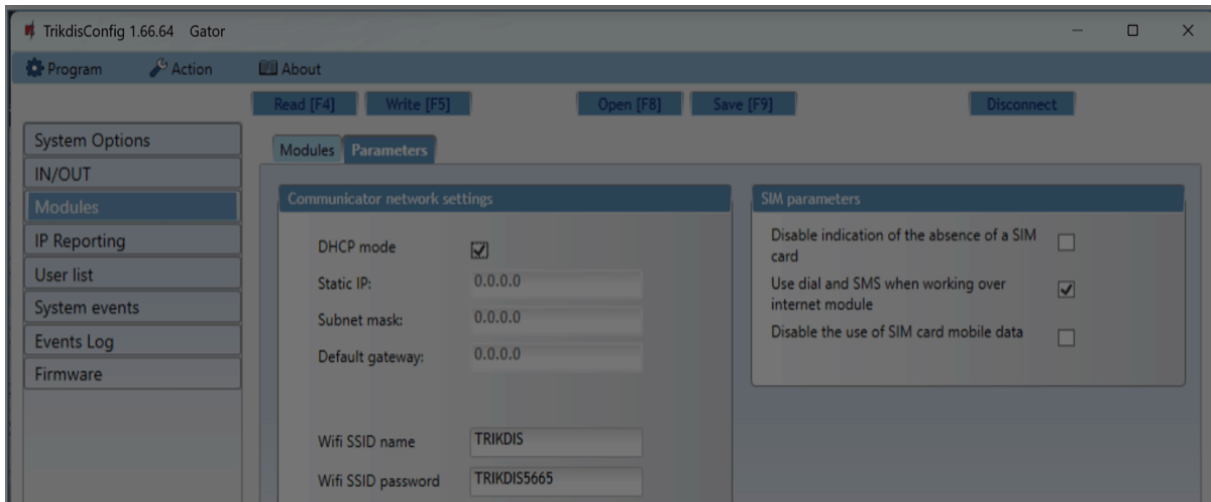
- **Modules** – select the module that is connected to the gate controller via RS485 from the list.
- **Serial No.** – enter the module serial number (6 digits), which is indicated on stickers on the module’s case and packaging.

After selecting the connected module and entering its serial number, go to **Modules** →

### Cookie consent

We use cookies to measure the effectiveness of our documentation and whether users find what they're searching for. With your consent, you're helping us to make our documentation better.

- Google Analytics



### Settings group „Communicator network settings“

- **DHCP mode** – WiFi module’s mode for registering to network (manual or automatic). Check the box (automatic registration mode) and the WiFi module will automatically scan the network settings (subnet mask, gateway) and will be assigned an IP address.
- **Static IP** – static IP address for when manual registering mode is set.
- **Subnet mask** – subnet mask for when manual registering mode is set.
- **Default gateway** – gateway address for when manual registering mode is set.
- **Wifi SSID name** – name of the WiFi network that the W485 will connect to.
- **Wifi SSID password** - WiFi network password.

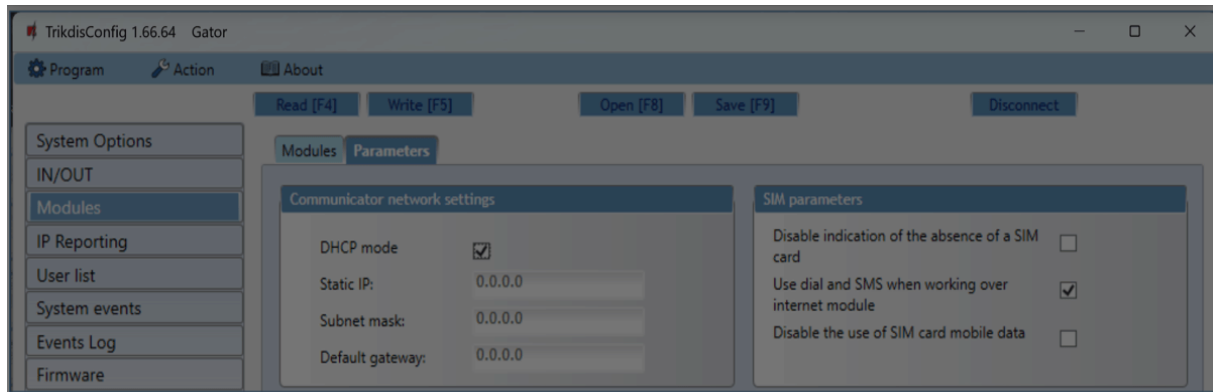
### Settings group „SIM parameters“

- **Disable indication of the absence of a SIM card** – checking the box will disable the indication of the absence of the SIM card in the controller.
- **Use dial and SMS when working over internet module** – checking the box will enable control of the gate controller via call and SMS. If the field is not checked and there is a WiFi network, then the call and SMS messages are not used. If the field is unchecked and there is no WiFi network, then controller can manage call and SMS messages.

### Cookie consent

We use cookies to measure the effectiveness of our documentation and whether users find what they're searching for. With your consent, you're helping us to make our documentation better.

- ✔ Google Analytics



### Settings group „ Communicator network settings“

- **DHCP mode** – „Ethernet“ module’s mode for registering to network (manual or automatic).
- **Static IP** – static IP address for when manual registering mode is set.
- **Subnet mask** – subnet mask for when manual registering mode is set.
- **Default gateway** – gateway address for when manual registering mode is set.

### Settings group „ SIM parameters“

- **Disable indication of the absence of a SIM card** – checking the box will disable the indication of the absence of the SIM card in the controller.
- **Use dial and SMS when working over internet module** – checking the box will enable control of the gate controller via call and SMS. If the field is unchecked and there is internet, then SMS and calls are not used. If the field is unchecked and there is no Internet, then controller can manage call and SMS messages. Controller will send SMS messages to the user.
- **Disable the use of SIM card mobile data** – checking the box will disable the use of mobile data from the SIM card. Data will only be sent via module E485. If the internet disappears, controller will store data in memory. When the Internet is restored, the controller will send the saved data via the “Ethernet” E485 module.

### Cookie consent

We use cookies to measure the effectiveness of our documentation and whether users find what they're searching for. With your consent, you're helping us to make our documentation better.

- Google Analytics



## 5.5 "IP Reporting" window

The controller can send messages to the security company's CMS receiver.

### Settings group "Primary channel"

- **Communication type** – choose the type of communication (IP, SMS) with the CMS (Central Monitoring Station) receiver.
- **Domain or IP** – enter the receiver's domain or IP address.
- **Port** – enter the receiver's network port number.
- **Phone number** – phone number of CMS receiver capable of receiving SMS messages (e.g.: 370xxxxxxx), when selected **Communication type** is SMS.
- **Encryption Key** – 6-digit message encryption key that must match the encryption key of the CMS receiver.

### Settings group "Backup channel"

The settings are identical to those of the main communication channel.

### Cookie consent

We use cookies to measure the effectiveness of our documentation and whether users find what they're searching for. With your consent, you're helping us to make our documentation better.

- Google Analytics



- **DNS1 and DNS2** – IP addresses of DNS servers.

### Settings group “Backup channel 2”

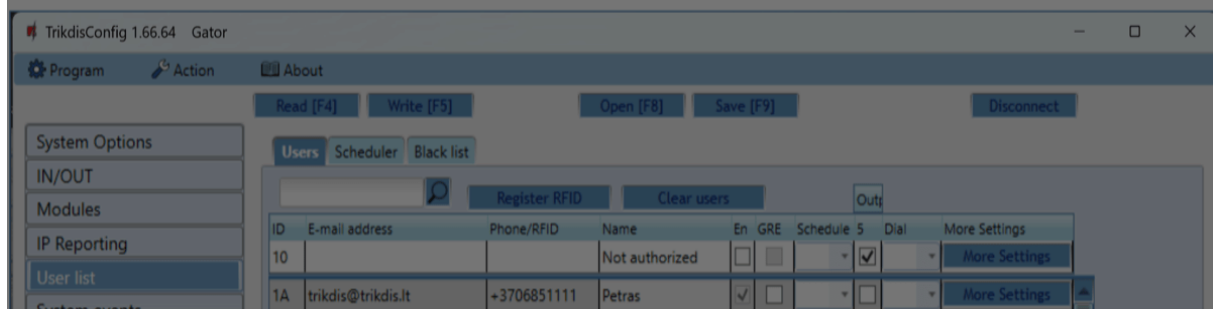
- **Phone number** - phone number of CMS receiver capable of receiving SMS messages (e.g.: 370xxxxxxx). The backup SMS channel is used when messages fail to send with both primary and backup channels. It is extremely useful because it functions even when IP connectivity is disrupted in the mobile operator’s network. This channel works only when GPRS mode is set both for the main channel and backup channel. SMS messages will be sent to the response center’s SMS receiver: 1) as soon as the controller is enabled for the first time; 2) after loss of TCP/IP or UDP/IP connection in the main and backup channels.

### Settings group “Cloud application”

- **Enable cloud service** –by ticking the box, enable the cloud service. The controller will be able to communicate with the Protegus2 app and it will be possible to remotely configure the controller with the TrikdisConfig program.
- **Parallel reporting** – the messages are sent simultaneously to the CMS, Protegus2 app and to users. When not enabled, messages to Protegus2 app and users will be sent only after being sent to CMS.
- **Cloud Access Code** – 6-digit code for connecting with Protegus2 (default code - 123456).

## 5.6 “User list” window

### “Users” tab



### Cookie consent

We use cookies to measure the effectiveness of our documentation and whether users find what they're searching for. With your consent, you're helping us to make our documentation better.

- Google Analytics



- **Name** – specify user's name.
- **En** - check the box for the user to be activated.
- **GRE** - check the box to send an SMS message to the GATOR user.
- **Scheduler** – select the schedule number by which the user will be allowed to control the controller.
- **Output** - mark the number of the output that will be controlled by the user.
- **Code** - if an RFID reader with keypad (Wiegand 26/34) is connected to the controller, then the user can enter the control code.
- **Dial** - mark the outputs that will be automatically activated when making a call (if the user has several OUT outputs assigned), after which the call will be rejected.
- **More settings** - by clicking on the "**More settings**" button, an additional user settings window will open.

 **NOTE**

If box "En." is unticked for user "**No.10**" with the name "**Not authorized**", users not on the users list will be banned from controlling the controller with phone call.

### Administrator settings (numbers from 1A to 7A)

- ID – administrator number.
- Enabled – boxed is ticked, user is allowed to control outputs OUT.
- Name – specify administrator's name.
- E-mail address – specify administrator's e-mail address.
- Phone or RFID code – enter the administrator phone number or the ID number of the RFID pendant (card).
- Keypad code – if an RFID reader with keypad (Wiegand 26/34) is connected to the controller, then the user can enter the control code.

### Cookie consent

We use cookies to measure the effectiveness of our documentation and whether users find what they're searching for. With your consent, you're helping us to make our documentation better.

- Google Analytics



**User settings**

ID 1A

Enabled

Name Petras

E-mail address trikdis@trikdis.lt

Phone or RFID code +3706851111

Keypad code

ACK for SMS message

Receive test SMS

Forward unknown SMS

SMS notification for  IN1  OUT5

Can control outputs  OUT5

Greetings

Automatic call control  OUT5

Save

- **Forward unknown SMS** – SMS message forwarding from unknown numbers.
- **SMS notification for** – specify events (IN1, IN2, OUT3, OUT4, OUT5) that the administrator will receive SMS notifications about.
- **Can control output** - mark the output number that will be controlled by the administrator.
- **Greetings** – check the box to send a welcome SMS message to the user by the GATOR controller.
- **Automatic call control** - check the outputs that will be automatically activated on a call (if the user has multiple OUT outputs assigned), after which the call will be rejected.

**User settings (numbers from 11 to 1010)** - ID – user number.

- Enabled – boxed is ticked, user is allowed to control outputs OUT.
- Name – specify user's name.
- E-mail address – specify user's e-mail address.

## Cookie consent

We use cookies to measure the effectiveness of our documentation and whether users find what they're searching for. With your consent, you're helping us to make our documentation better.

- Google Analytics



The screenshot shows a 'User settings' window with the following fields and options:

- ID: 11
- Enabled:
- Name:
- E-mail address:
- Phone or RFID code:
- Keypad code:
- Assign schedule:
- Valid from:  13.10.2025 15 00:00
- Valid until:  14.10.2025 15 00:00
- Enable counter:
- Set counter:
- Current counter:
- Can control outputs:  OUT5
- Greetings:
- Automatic call control:  OUT5

A 'Save' button is located at the bottom center of the window.

- **Enable counter** – check the box to enable the counter.
- **Set counter** – specify number of times that user can control the controller during the chosen time.
- **Current counter** - current number of control times.
- **Can control outputs** - mark the number of the output that will be controlled by the user.
- **Greetings** – check the box to send a welcome SMS message to the user by the GATOR controller.
- **Automatic call control** - check the outputs that will be automatically activated on a call (if the user has multiple OUT outputs assigned), after which the call will be rejected.

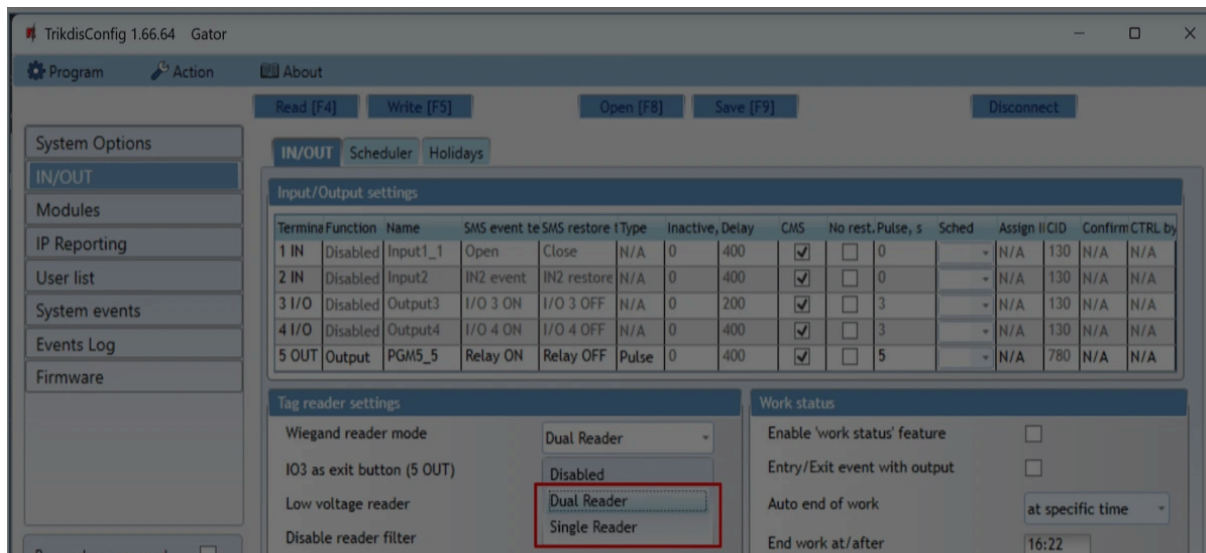
### 5.6.1 RFID pendant (card) registration

1. Connect the RFID reader to the controller (see p.2.6 " Schematic for connecting for RFID

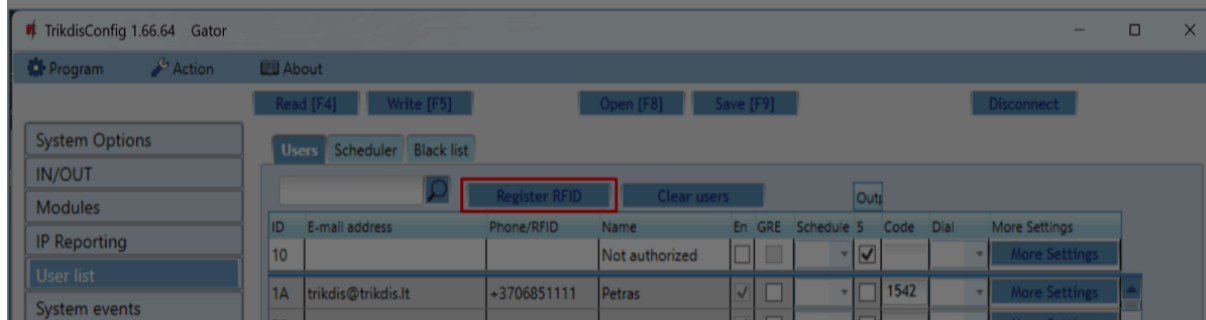
#### Cookie consent

We use cookies to measure the effectiveness of our documentation and whether users find what they're searching for. With your consent, you're helping us to make our documentation better.

- Google Analytics



Click **“Register RFID”** in the **“User list”** window.



The RFID pendants (cards) registration window will open.



## Cookie consent

We use cookies to measure the effectiveness of our documentation and whether users find what they're searching for. With your consent, you're helping us to make our documentation better.

Google Analytics



RFID registration mode

Card/Tag found:  
12771027

Enter user name:  
Georgij

User can control PGM Output 5

Device administrator

ADD Cancel

RFID pendants (cards) can be registered in *TrikdisConfig* by entering their ID numbers in the "Phone/RFID" field. Give the user a Name, check field the "En." and a managed "Outputs" field. Press the Write [F5] button to save the list of RFID pendants (cards) to the controller.

0014433711 220, 15791

TrikdisConfig 1.66.64 Gator

Program Action About

Read [F4] Write [F5] Open [F8] Save [F9] Disconnect

Users Scheduler Black list

Register RFID Clear users Out

ID	E-mail address	Phone/RFID	Name	En	GRE	Schedule	S	Code	Dial	More Settings
10			Not authorized	<input type="checkbox"/>	<input type="checkbox"/>		<input checked="" type="checkbox"/>			More Settings
1A	trikdis@trikdis.lt	+3706851111	Petras	<input checked="" type="checkbox"/>	<input type="checkbox"/>		<input type="checkbox"/>	1542		More Settings
2A		12771027	Georgij	<input checked="" type="checkbox"/>	<input type="checkbox"/>		<input checked="" type="checkbox"/>			More Settings

2. RFID pendant (card) registration with Protegus2 application.

## Cookie consent

We use cookies to measure the effectiveness of our documentation and whether users find what they're searching for. With your consent, you're helping us to make our documentation better.

Google Analytics



← Edit user Delete

Email  
jonas@trikdis.lt

Name  
Jonas

Phone number or RFID code  
0014320752

Code  
1144

Can edit user list

Is device administrator

Can see events

Can access adv. settings

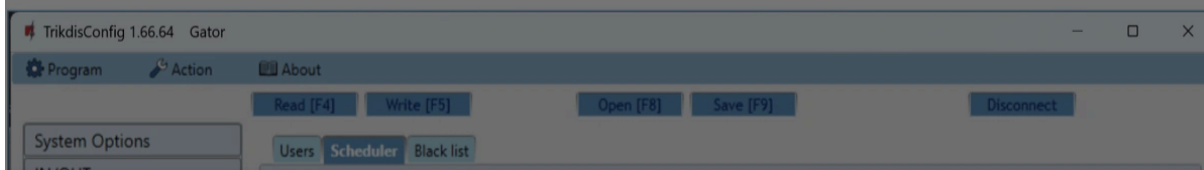
Allow to control outputs

Output5

Cancel Save

### “Scheduler” tab

The user can control the Outputs according to the set schedule. Schedule must be assigned to user.



### Cookie consent

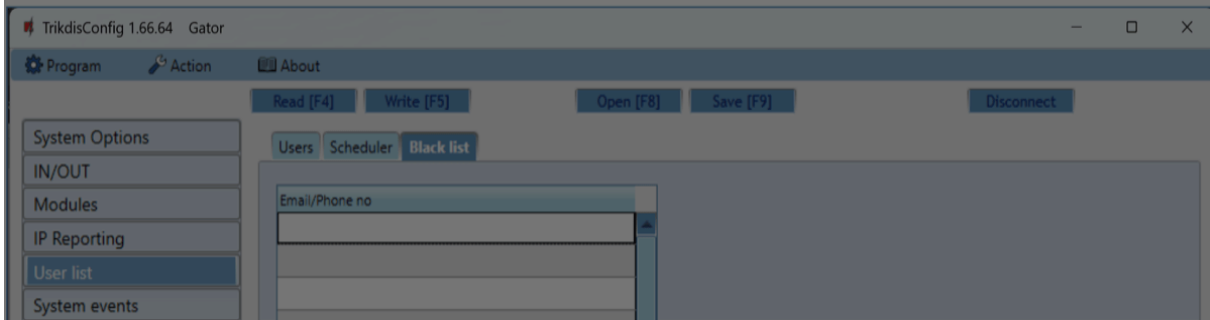
We use cookies to measure the effectiveness of our documentation and whether users find what they're searching for. With your consent, you're helping us to make our documentation better.

Google Analytics



- **Enable** – enable time schedule when the user will be able to control the controller's outputs.
- **Start time** – specify time and days of the week from when the user can control controller's outputs.
- **Stop time** – specify time and days of the week until when the user can control controller's outputs.

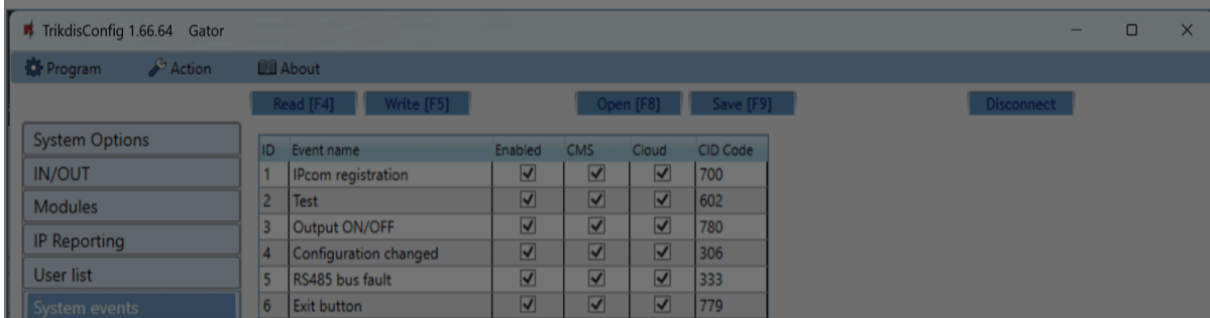
### “Black list” tab



The **“Black list”** contains e-mail addresses, phone numbers, RFID pendant (card) ID numbers of users who are banned from controlling the controller.

There is an easy way to add new items to the black list straight from the events log. Right-click on a telephone number, e-mail address, RFID pendant (card) ID number and choose **“Add to black list”**.

## 5.7 “System events” window



### Cookie consent

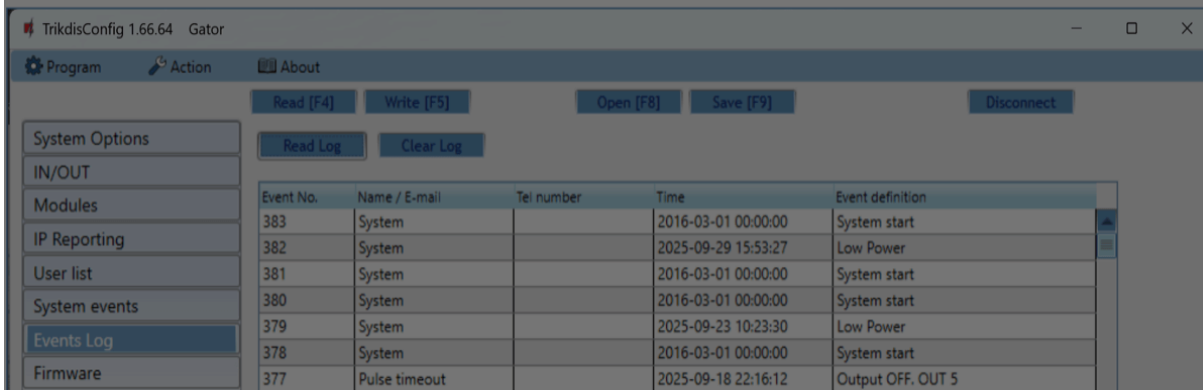
We use cookies to measure the effectiveness of our documentation and whether users find what they're searching for. With your consent, you're helping us to make our documentation better.

- Google Analytics



- **CMS** – messages about chosen events will be sent to CMS.
- **Cloud** – notifications about chosen events will be sent to Protegus2 app.
- **CID Code** – event's Contact ID code.

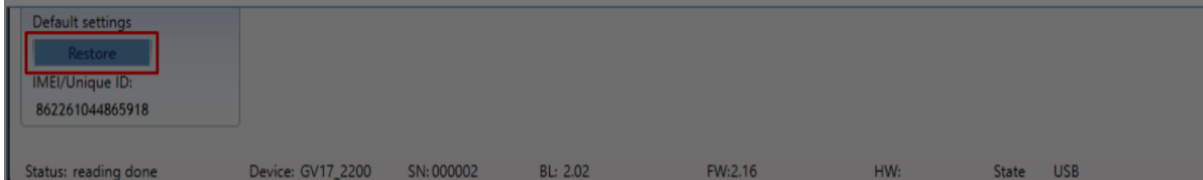
## 5.8 "Events Log" window



Click the button "**Read Log**". The events log will be read from the controller's memory. The "**Events log**" provides information about the controller's actions and its internal events.

## 5.9 Restore default settings

To restore the default settings of the controller you need to click the "**Restore**" button in the TrikisConfig program window.



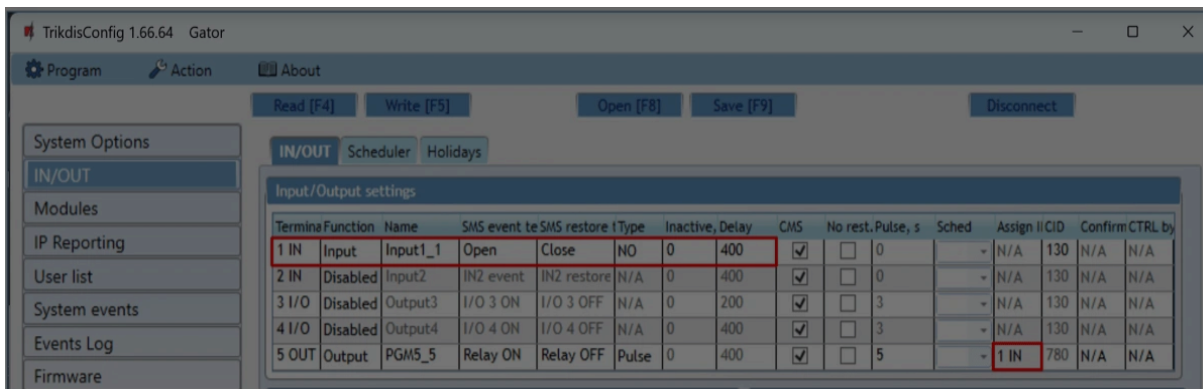
## 5.10 Settings for gate state indication

Protegus2 app and Widget can show the current state of the gates (closed or open). For this

### Cookie consent

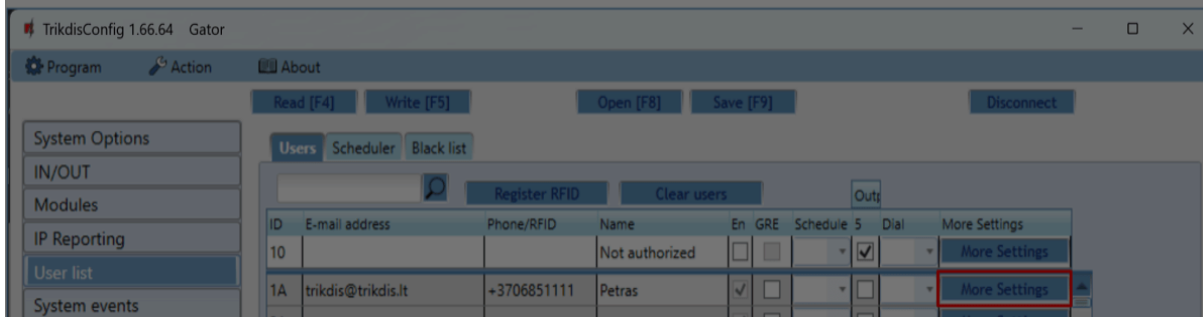
We use cookies to measure the effectiveness of our documentation and whether users find what they're searching for. With your consent, you're helping us to make our documentation better.

Google Analytics

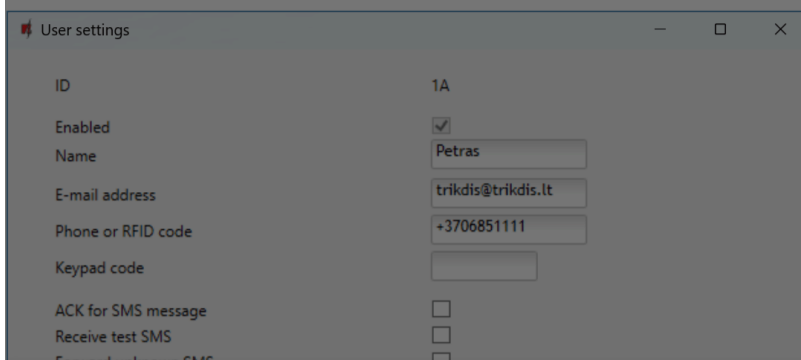


If you want to receive SMS messages about the gates opening/closing, enter SMS texts for input 1IN event/restore.

In the "Users" window, click on the "More settings" button.



In the "User settings" window, tick the IN1 box if you want the user to receive SMS messages about the state of the gate. Click "Save".



### Cookie consent

We use cookies to measure the effectiveness of our documentation and whether users find what they're searching for. With your consent, you're helping us to make our documentation better.

Google Analytics



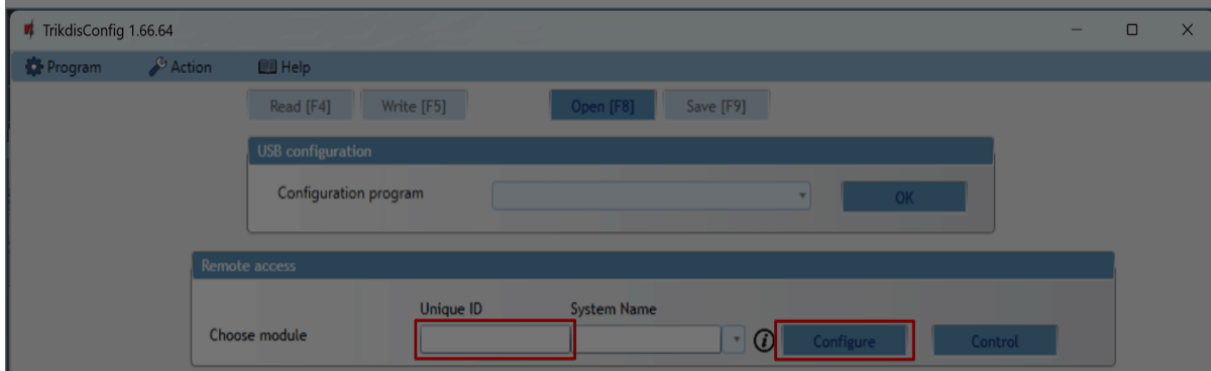
## 6. Setting parameters remotely

### IMPORTANT

Remote configuration will only work when:

1. Protegus service is enabled. Enabling the service is described in chapter 5.5 "IP reporting" window";
2. Power is on („POWER" LED is blinking green);
3. Connected to network („NETWORK" LED is green solid and yellow blinking).

1. Download the program TrikdisConfig from [www.trikdis.com](http://www.trikdis.com).
2. Make sure that the controller is connected to the internet and connection to Protegus is enabled.
3. Launch the configuration program TrikdisConfig and in the field "**Unique ID**" of the "**Remote access**" section enter the "**IMEI/Unique ID**" number of your controller (the IMEI number is given on the stickers that can be found on the lower part of the device's case and on the packaging).



4. In the field "**System Name**" you can give any name to this controller. Click "**Configure**".

### Cookie consent

We use cookies to measure the effectiveness of our documentation and whether users find what they're searching for. With your consent, you're helping us to make our documentation better.

- Google Analytics



## 7. Testing of Cellular gate controller

When configuration and installation are finished, test the system:

1. Check if the power is on;
2. Check network connectivity (“**NETWORK**” indicator must be green solid and blink yellow);
3. To test the controller’s inputs, trigger them and make sure that the recipients get correct messages;
4. To test the controller’s outputs, turn them on remotely and make sure that the recipients get correct messages and the outputs are activated correctly.

## 8. Updating firmware manually

### NOTE

When the controller is connected to *TrikdisConfig*, the program will offer to update the device's firmware if updates are available. Updates require an internet connection. / If antivirus software is installed in your computer, it might block the automatic firmware update function. In this case you will have to reconfigure your antivirus software.

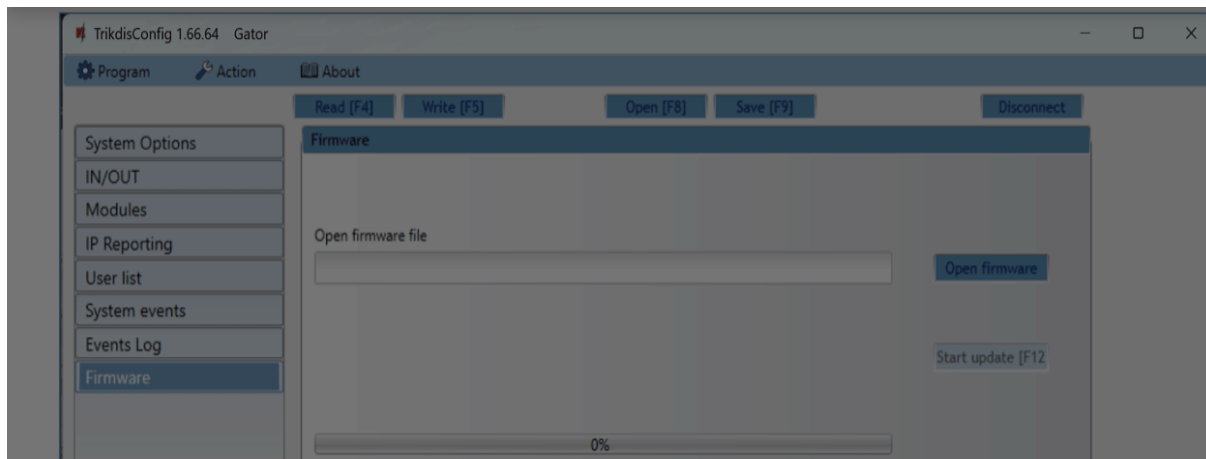
The controller’s firmware can also be updated and changed manually. All prior controller parameters remain after update. When writing manually, the firmware can be changed to an older or a newer version. Follow these steps:

1. Launch ***TrikdisConfig***.
2. Connect the controller to a computer using a USB Mini-B cable or connect to the controller remotely. If a newer version of firmware is available, the program will offer to install it.
3. Choose the menu branch “**Firmware**”.

### Cookie consent

We use cookies to measure the effectiveness of our documentation and whether users find what they're searching for. With your consent, you're helping us to make our documentation better.

- Google Analytics



5. Click the button **Start update [F12]**.
6. Wait for the update to finish.

## 9. Safety precautions

The Cellular gate controller should only be installed and maintained by qualified personnel.

Please read this manual carefully prior to installation in order to avoid mistakes that can lead to malfunction or even damage to the equipment.

Always disconnect the power supply before making any electrical connections.

Any changes, modifications or repairs not authorized by the manufacturer shall render the warranty void.



Please adhere to your local waste sorting regulations and do not dispose of this equipment or its components with other household waste.

### Cookie consent

We use cookies to measure the effectiveness of our documentation and whether users find what they're searching for. With your consent, you're helping us to make our documentation better.

Google Analytics